



安全 · 高效 · 便捷

SurePAGE™ 预制胶

为您的健康和实验保驾护航！

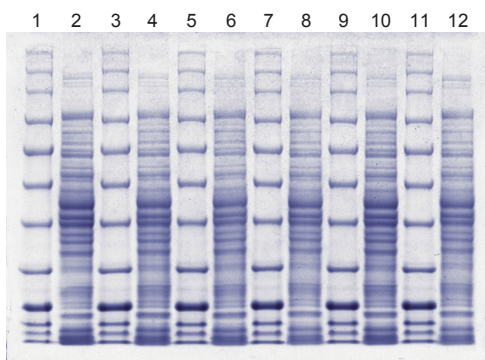
SurePAGE™ 蛋白预制胶

手工制胶过程中有毒物质挥发，使人神经系统中毒，极大地损害了您的健康，使用金斯瑞SurePAGE™预制胶不仅守护了您的健康，还为实验的成功提供了一份科学保障！

Key Features:

- 它是Express Plus™预制胶的升级产品
- 蛋白条带分辨率高和灵敏度高
- 最大上样量可达80 ul，是市场上预制胶上样量的两倍
- 2-8°下保存期长达12个月
- 确保您的western blot转印更高效
- 兼容国内外主流Mini型电泳槽

超强的均一性



凝胶: SurePAGE™, 4-12%, 12 wells (Genscript, M00653)

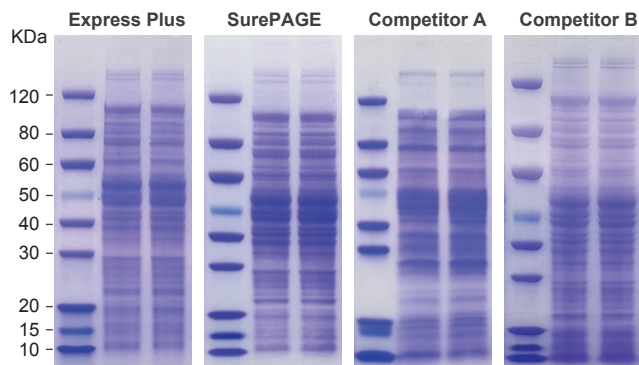
染色: eStain L1 蛋白染色仪(Genscript, L00657C), 9 min 30 s

Lane 1, 3, 5, 7, 9, 11: 4 μ l Color Prestained Protein Standard, Broad Range (11-245kDa) (P7712S);

Lane 2, 4, 6, 8, 10, 12: 6 μ l *E.coli* cell lysate.

优越的分辨率

从图中可以看出，SurePAGE™的分辨率优于Express Plus 和Competitor A 和 B，尤其在30 KDa以下的小片段的分辨率上更高，条带更加锐利和清晰。



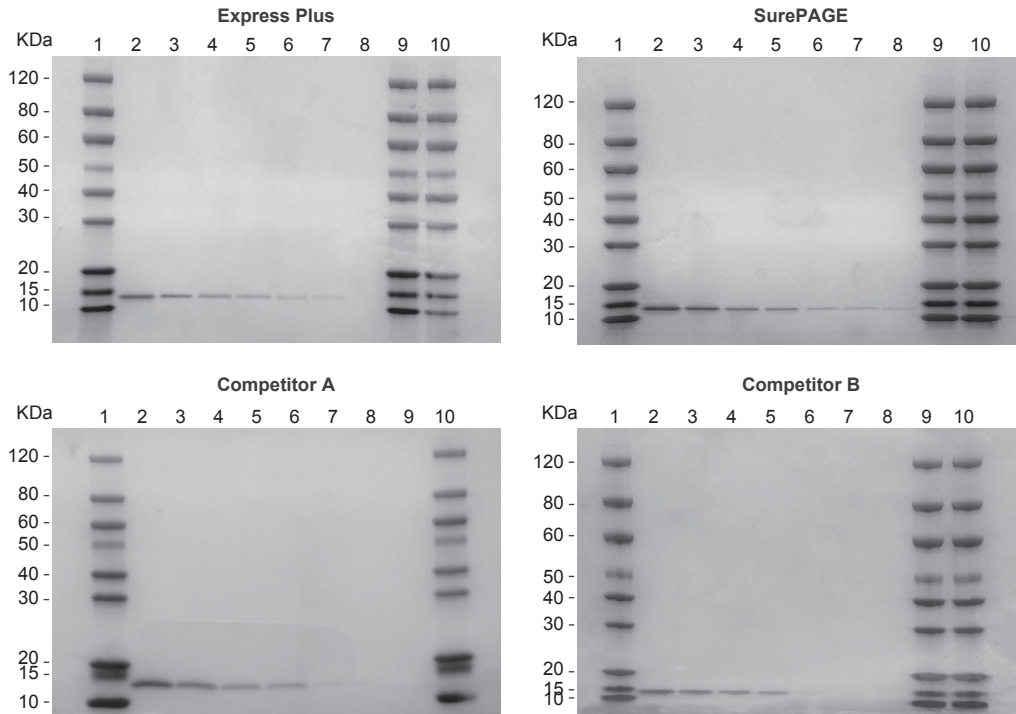
凝胶: SurePAGE, 4-12%, 12 wells (Genscript, M00653)

样品: Top 10 cell

染色: eStain L1 蛋白染色仪 (Genscript, L00657C), 9 min 30 s

超高的灵敏度

从下图中可以看出从下图中可以看出 SurePAGE™ 预制胶能够检测含量低至12.5 ng 的蛋白样品，比其他产品具有更高的检测灵敏度。



凝胶：SurePAGE™, 4-12%, 12 wells (Genscript, M00653)

样品：

Lane 1: Protein Standard (MM1397-500), 5 ul;

Lane 2-8: 溶菌酶含量分别为800 ng, 400 ng, 200 ng, 100 ng, 50 ng, 25 ng, 12.5 ng;

Lane 9-10: Protein Standard (MM1397-500), 5 ul

染色：eStain L1 蛋白染色仪 (Genscript, L00657C), 9 min 30 s

蛋白迁移指导

8-16%	4-20%	4-12%	8%	10%	12%
270 KD	270 KD	270 KD	270 KD	270 KD	270 KD
175 KD	175 KD	175 KD	175 KD	175 KD	175 KD
130 KD	130 KD	130 KD	130 KD	130 KD	130 KD
95 KD	95 KD	95 KD	95 KD	95 KD	95 KD
80 KD	80 KD	80 KD	80 KD	80 KD	80 KD
65 KD	65 KD	65 KD	65 KD	65 KD	65 KD
50 KD	50 KD	50 KD	50 KD	50 KD	50 KD
40 KD	40 KD	40 KD	40 KD	40 KD	40 KD
35 KD	35 KD	35 KD	35 KD	35 KD	35 KD
30 KD	30 KD	30 KD	30 KD	30 KD	30 KD
20 KD	20 KD	20 KD	20 KD	20 KD	20 KD
15 KD	15 KD	15 KD	15 KD	15 KD	15 KD
10 KD	10 KD	10 KD	10 KD	10 KD	10 KD
5 KD	5 KD	5 KD	5 KD	5 KD	5 KD

SurePAGE™ 可兼容以下电泳槽

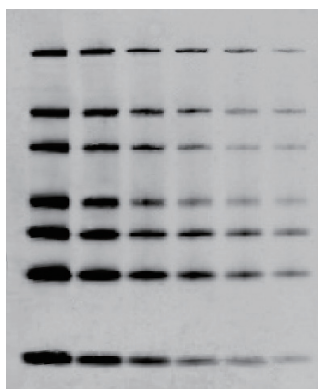
- 六一、天能
- GradiGel Mini 4-Cell
- IBI Universal Protein System
- EC 4-Cell
- Hoefer Mighty Small (SE 260/SE 250)
- Daiichi Mini 2-Gel&6-Gel
- Bio-Rad Mini-PROTEANII&3
- Invitrogen Novex XCell I, II, & Surelock (须与金斯瑞特供的挡板一起使用)

Western blot整体解决方案



Western blot 转印分析

SurePAGE™ 预制胶的灵敏度和分辨率很优越，能够确保低含量的蛋白条带也能够清晰锐利，在Western blot 转印之后含量低的小条带能够顺利地检测到，有了SurePAGE™ 预制胶这个助手，您的Western blot 实验会更加轻松！



凝胶: SurePAGE™ Gel, 4-20%, 10 wells (GenScript, M00655)

转膜: eBlot L1 快速湿转仪 (L00686), 10 min, NC膜

上样: WB-MASTER Protein Standard (GenScript, M00521), 其中80 KDa条带的蛋白含量从左到右依次为: 10 ng, 5 ng, 2.5 ng, 1.25 ng, 0.625 ng, 0.3125 ng。

金斯瑞预制胶应用文献

1. Jacqueline MacDonald, Sean Miletic, Typhanie Gaildry,, Adam Chin-Fatt, and Rima Menassa. Co-expression with the Type 3 Secretion Chaperone CesT from Enterohemorrhagic E. coli Increases Accumulation of Recombinant Tir in Plant Chloroplasts. *Front. Plant Sci.* 2017 Mar;
2. Zhdanov AV, Andreev DE, Baranov PV, Papkovsky DB. Low energy costs of F1Fo ATP synthase reversal in colon carcinoma cells deficient in mitochondrial complex IV. *Free Radic Biol Med.* 2017 Feb.
3. Yuan X, Zhao M, Wei J, Zhang W, Wang B, Myint Khaing M, Liang G. New insights on the role of alkaline phosphatase 2 from *Spodoptera exigua* (Hübner) in the action mechanism of Bt toxin Cry2Aa. *J Insect Physiol.* 2016 Dec.
4. Gen Zhang, Guo-Yong Yan, Xiao-Xue Yang, Yue-Him Wong, Jin Sun, Yu Zhang, Li-Sheng He, Ying Xu and Pei-Yuan Qian. Amphibalanus Amphitrite and Its Role in the Larval Settlement. *J Exp Zool B Mol Dev Evol.* 2016 Jun; 326(4); 237-249.
5. Zhang Y, Campbell R, Drake M, Zhong Q. Decolorization of Cheddar cheese whey by activated carbon. *J Dairy Sci.* 2015 Feb.
6. Dmitriev RI, Papkovsky DB. FEBS Lett. In vitro ischemia decreases histone H4K16 acetylation in neural cells. *FEBS Lett.* 2015 Jan; 589(1);138-44.
7. Zhdanov AV, Waters AH, Golubeva AV, Papkovsky DB. Differential contribution of key metabolic substrates and cellular oxygen in HIF signalling. *Exp Cell Res.* 2015 Jan; 330(1); 13-28.
8. Moloney RD, Stilling RM, Dinan TG, Cryan JF. Early-life stress-induced visceral hypersensitivity and anxiety behavior is reversed by histone deacetylase inhibition. *Neurogastroenterol Motil.* 2015 Dec; 27(12);1831C1836.
9. Vinokur JM, Korman TP, Sawaya MR, Collazo M, Cascio D, Bowie JU. Structural Analysis of Mevalonate-3-Kinase Provides Insight Into The Mechanisms of Isoprenoid Pathway Decarboxylases. *Protein Sci.* 2014 Nov.
10. Vadukoot AK, AbdulSalam SF, Wunderlich M, Pullen ED, Landero-Figueroa J, Mulloy JC, Merino EJ. Design of a hydrogen peroxide-activatable agent that specifically targets cancer cells. *Bioorg Med Chem.* 2014 Dec;22(24);6885-92.
11. Battacharya M, Nandanoor A, Osman M, Kasinathan C, Frederikse P. NMDA Glutamate Receptor NR1, NR2A and NR2B Expression and NR2B Tyr-1472 Phosphorylation in the Lens. *Neurochem Res.* 2014 Jul.
12. CH Lu, KH Lin, YY Hsu, KT Tsen, YS Kuan. Inhibition of Escherichia coli respiratory enzymes by short visible femtosecond laser irradiation. *J Phys D Appl Phys.* 2014 Jul;
13. Q Shi, V Sutariya, A Bishayee, D Bhatia. Sequential activation of Elk-1/Egr-1/GADD45 α by arsenic. *Oncotarget.* 2014 Jun;5(11);3862-70.
14. Golubeva AV, Zhdanov AV, Mallel G, Dinan TG, Cryan JF. The mouse cyclophosphamide model of bladder pain syndrome: tissue characterization, immune profiling, and relationship to metabotropic glutamate receptors. *Physiol Rep.* 2014 Mar;2(3).



扫码关注我们

产品列表

产品编号	产品名称	胶浓度	分离范围	规格
M00652	SurePAGE™, Bis-Tris, 10x8, 4-12%, 10 wells	4-12%	250-20 kDa	Box of 10
M00653	SurePAGE™, Bis-Tris, 10x8, 4-12%, 12 wells	4-12%	250-20 kDa	Box of 10
M00654	SurePAGE™, Bis-Tris, 10x8, 4-12%, 15 wells	4-12%	250-20 kDa	Box of 10
M00655	SurePAGE™, Bis-Tris, 10x8, 4-20%, 10 wells	4-20%	250-10 kDa	Box of 10
M00656	SurePAGE™, Bis-Tris, 10x8, 4-20%, 12 wells	4-20%	250-10 kDa	Box of 10
M00657	SurePAGE™, Bis-Tris, 10x8, 4-20%, 15 wells	4-20%	250-10 kDa	Box of 10
M00658	SurePAGE™, Bis-Tris, 10x8, 8-16%, 10 wells	8-16%	160-10 kDa	Box of 10
M00659	SurePAGE™, Bis-Tris, 10x8, 8-16%, 12 wells	8-16%	160-10 kDa	Box of 10
M00660	SurePAGE™, Bis-Tris, 10x8, 8-16%, 15 wells	8-16%	160-10 kDa	Box of 10
M00661	SurePAGE™, Bis-Tris, 10x8, 8%, 10 wells	8%	180-20 kDa	Box of 10
M00662	SurePAGE™, Bis-Tris, 10x8, 8%, 12 wells	8%	180-20 kDa	Box of 10
M00663	SurePAGE™, Bis-Tris, 10x8, 8%, 15 wells	8%	180-20 kDa	Box of 10
M00664	SurePAGE™, Bis-Tris, 10x8, 10%, 10 wells	10%	160-10 kDa	Box of 10
M00665	SurePAGE™, Bis-Tris, 10x8, 10%, 12 wells	10%	160-10 kDa	Box of 10
M00666	SurePAGE™, Bis-Tris, 10x8, 10%, 15 wells	10%	160-10 kDa	Box of 10
M00667	SurePAGE™, Bis-Tris, 10x8, 12%, 10 wells	12%	120-6.5 kDa	Box of 10
M00668	SurePAGE™, Bis-Tris, 10x8, 12%, 12 wells	12%	120-6.5 kDa	Box of 10
M00669	SurePAGE™, Bis-Tris, 10x8, 12%, 15 wells	12%	120-6.5 kDa	Box of 10
M41210C	ExpressPlus™ PAGE Gel, 10x8, 4-12%, 10 wells	4-12%	250-20 kDa	Box of 10
M41212C	ExpressPlus™ PAGE Gel, 10x8, 4-12%, 12 wells	4-12%	250-20 kDa	Box of 10
M41215C	ExpressPlus™ PAGE Gel, 10x8, 4-12%, 15 wells	4-12%	250-20 kDa	Box of 10
M42010C	ExpressPlus™ PAGE Gel, 10x8, 4-20%, 10 wells	4-20%	250-10 kDa	Box of 10
M42012C	ExpressPlus™ PAGE Gel, 10x8, 4-20%, 12 wells	4-20%	250-10 kDa	Box of 10
M42015C	ExpressPlus™ PAGE Gel, 10x8, 4-20%, 15 wells	4-20%	250-10 kDa	Box of 10
M81610C	ExpressPlus™ PAGE Gel, 10x8, 8-16%, 10 wells	8-16%	160-10 kDa	Box of 10
M81612C	ExpressPlus™ PAGE Gel, 10x8, 8-16%, 12 wells	8-16%	160-10 kDa	Box of 10
M81615C	ExpressPlus™ PAGE Gel, 10x8, 8-16%, 15 wells	8-16%	160-10 kDa	Box of 10
M00810C	ExpressPlus™ PAGE Gel, 10x8, 8%, 10 wells	8%	180-20 kDa	Box of 10
M00812C	ExpressPlus™ PAGE Gel, 10x8, 8%, 12 wells	8%	180-20 kDa	Box of 10
M00815C	ExpressPlus™ PAGE Gel, 10x8, 8%, 15 wells	8%	180-20 kDa	Box of 10
M01010C	ExpressPlus™ PAGE Gel, 10x8, 10%, 10 wells	10%	160-10 kDa	Box of 10
M01012C	ExpressPlus™ PAGE Gel, 10x8, 10%, 12 wells	10%	160-10 kDa	Box of 10
M01115C	ExpressPlus™ PAGE Gel, 10x8, 10%, 15 wells	10%	160-10 kDa	Box of 10
M01210C	ExpressPlus™ PAGE Gel, 10x8, 12%, 10 wells	12%	120-6.5 kDa	Box of 10
M01212C	ExpressPlus™ PAGE Gel, 10x8, 12%, 12 wells	12%	120-6.5 kDa	Box of 10
M01215C	ExpressPlus™ PAGE Gel, 10x8, 12%, 15 wells	12%	120-6.5 kDa	Box of 10

备注：电泳缓冲液为Tris-MOPS或MES，转移缓冲液为Tris-Bicine。

www.genscript.com.cn

电话：400-025-8686-5810 025-58897288-5810

QQ：2881169431 2881169430

地址：南京市江宁高新园雍熙路28号

PFS170615

邮箱：product@genscript.com.cn

邮编：211100

