

Sample Name : Myelin Basic Protein (MBP) (synthetic)
 Cat. No.: RP103174
 Lot. No. :E9165519H
 Time Processed :7:25:22
 Month-Day-Year Processed :08/30/2019

Pump A : 0.065% trifluoroacetic in 100% water (v/v)
 Pump B : 0.05% trifluoroacetic in 100% acetonitrile (v/v)
 Total Flow:1 ml/min
 Wavelength:220 nm

| Time | Unit | Command | Value | Comment |
|-------|------------|---------------|-------|---------|
| 0.01 | Pumps | Pump A B.Conc | 5 | |
| 25.00 | Pumps | Pump A B.Conc | 65 | |
| 25.01 | Pumps | Pump A B.Conc | 95 | |
| 27.00 | Pumps | Pump A B.Conc | 95 | |
| 27.01 | Pumps | Pump A B.Conc | 5 | |
| 35.00 | Pumps | Pump A B.Conc | 5 | |
| 35.01 | Controller | Stop | | |

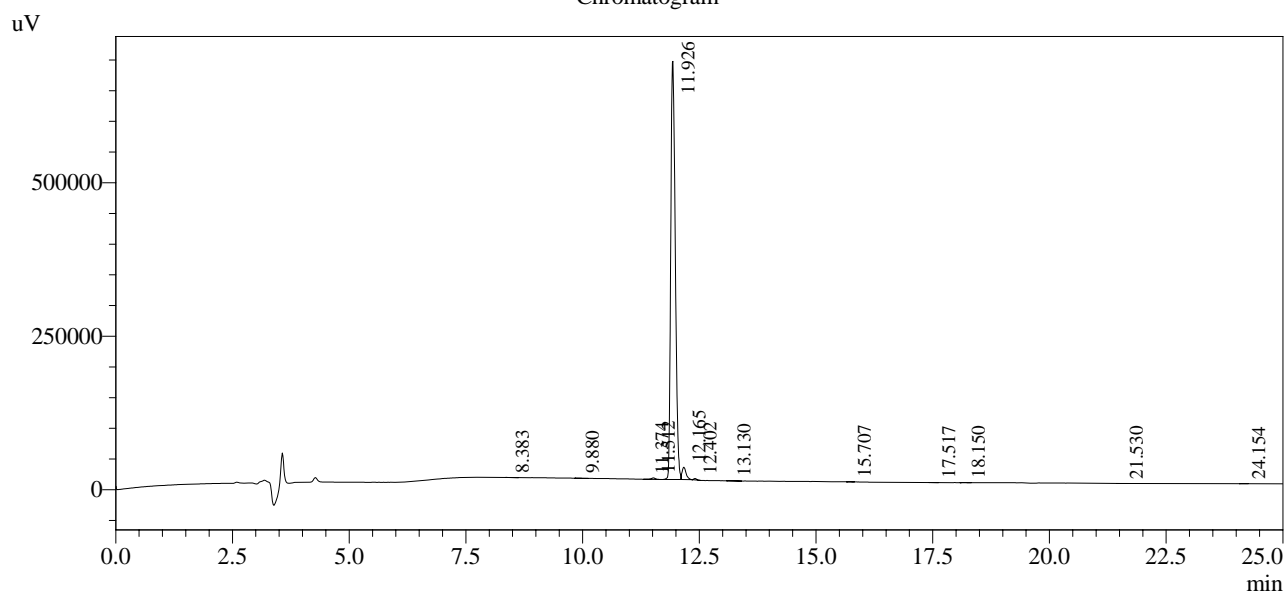
<<Column Performance>>

<Detector A>

Column : Inertsil ODS-3 4.6 x 250 mm

Equipment: GK11010009

Chromatogram



1 Det.A Ch1 / 220nm

Peak Table

Detector A Ch1 220nm

| Peak# | Ret. Time | Area | Height | Area % |
|-------|-----------|---------|--------|---------|
| 1 | 8.383 | 1056 | 91 | 0.022 |
| 2 | 9.880 | 1086 | 125 | 0.023 |
| 3 | 11.374 | 1645 | 349 | 0.034 |
| 4 | 11.512 | 13784 | 2362 | 0.289 |
| 5 | 11.926 | 4616022 | 681363 | 96.774 |
| 6 | 12.165 | 118816 | 20269 | 2.491 |
| 7 | 12.402 | 9757 | 2299 | 0.205 |
| 8 | 13.130 | 1132 | 108 | 0.024 |
| 9 | 15.707 | 1336 | 249 | 0.028 |
| 10 | 17.517 | 1038 | 119 | 0.022 |
| 11 | 18.150 | 1827 | 269 | 0.038 |
| 12 | 21.530 | 1225 | 212 | 0.026 |
| 13 | 24.154 | 1178 | 197 | 0.025 |
| Total | | 4769902 | 708014 | 100.000 |