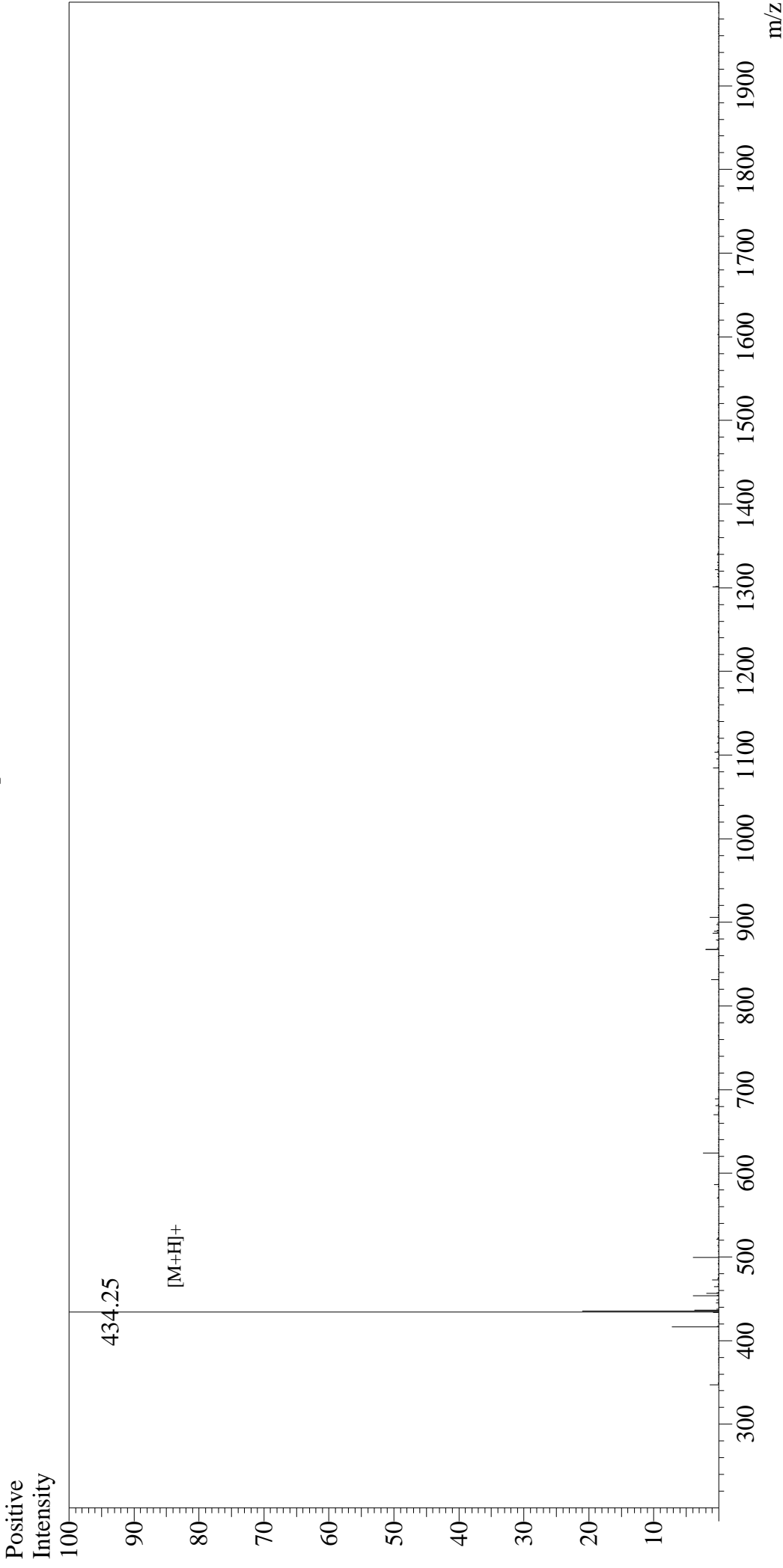


Mass Spectrum



Sample Information

User : Gary
Month-Day Processed : 04/11/18
Time Processed : 9:26:29
Injection Volume : 0.2
Sample Name : Arg-Gly-Asp-Ser
Cat No. : RPI0861
Lot No. : PE0011804
Theoretical MW : 433.42
Observed MW : 433.25

Interface : ESI
Nebulizing Gas Flow : 1.5L/min
CDL Temp : 250°C
Block Temp : 200°C

Interface Bias : +4.5kV
Drying Gas Flow : 5 L/min
T.Flow : 0.2ml/min
B.conc : 50%H2O/50%MeOH