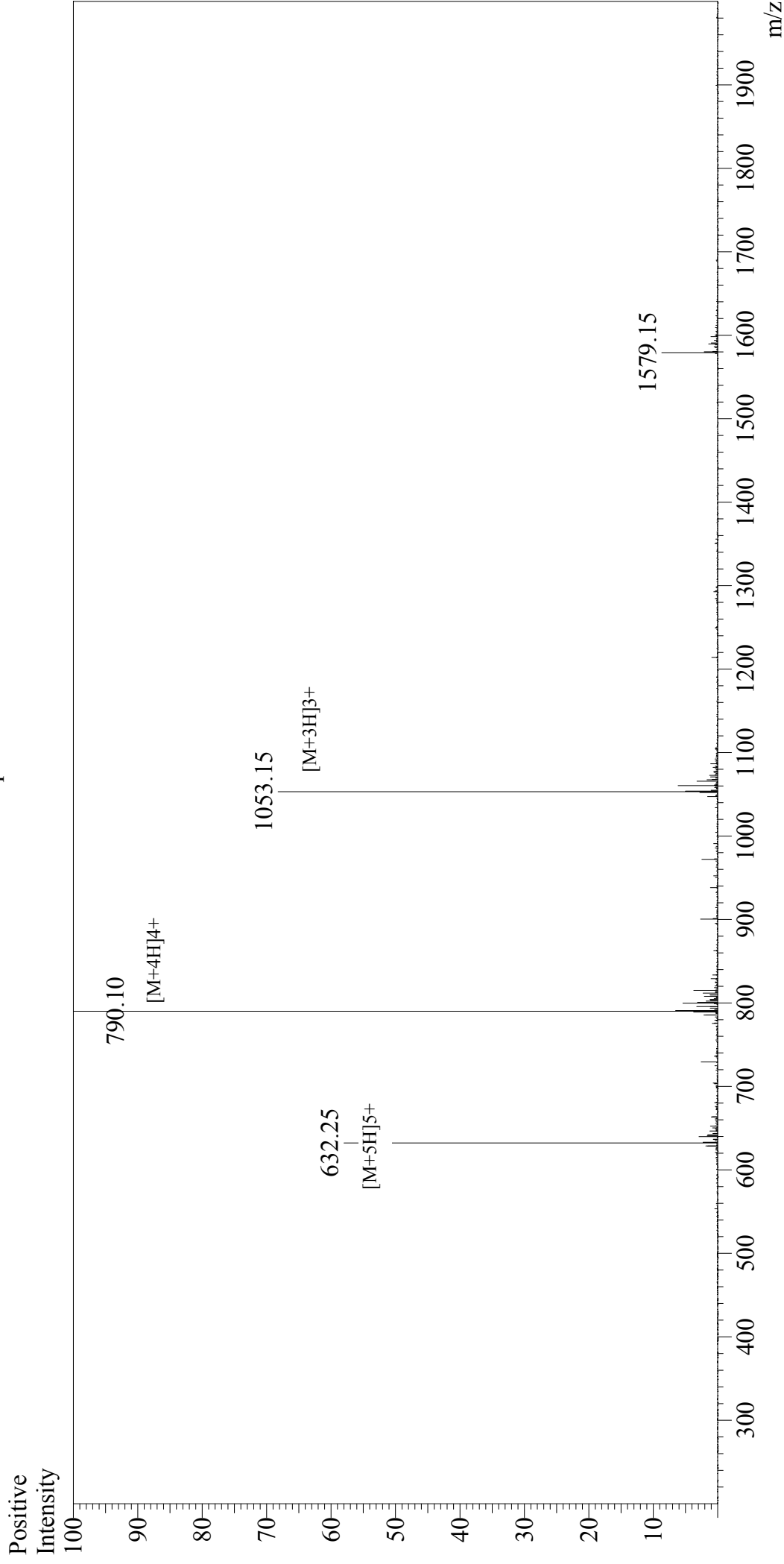


Mass Spectrum



Sample Information

User : Gary
Month-Day Processed : 10/20/17
Time Processed : 11:40:39
Injection Volume : 0.2
Sample Name : Galanin, human
Cat No. : RP10801
Lot No. : PE6911710
Theoretical MW : 3157.41
Observed MW : 3156.40

Interface

Interface : ESI
Nebulizing Gas Flow : 1.5L/min
CDL Temp : 250 °C
Block Temp : 200 °C

Interface Bias

Interface Bias : +4.5kV
Drying Gas Flow : 5 L/min
T.Flow : 0.2ml/min
B.conc : 50%H2O/50%MeOH