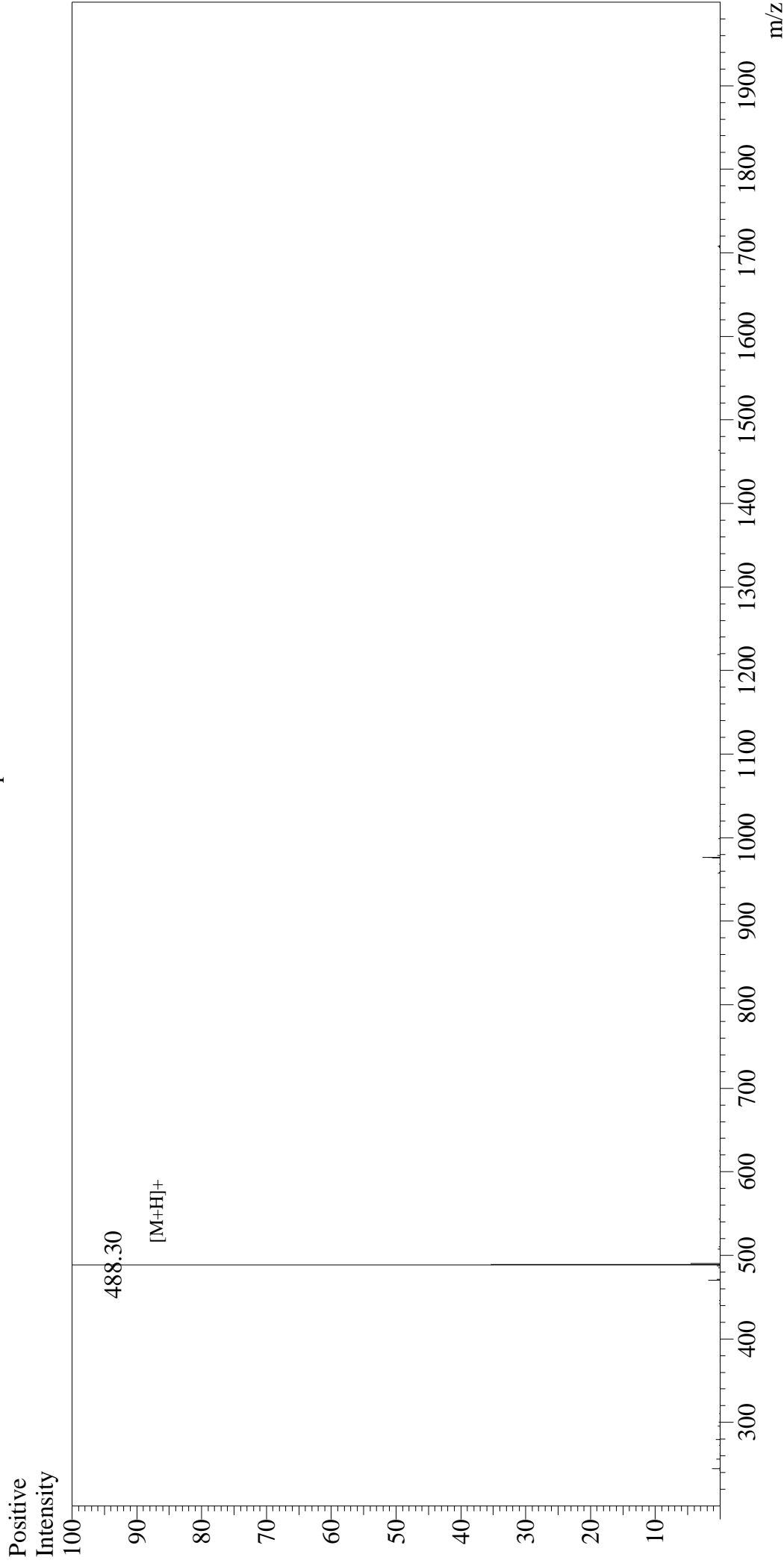


Mass Spectrum



Sample Information

User : Gary
Month-Day Processed : 12/21/16
Time Processed : 11:26:38
Injection Volume : 0.5
Sample Name : N-Acetyl-Ser-Asp-Lys-Pro
Cat No. : RPI0555
Lot No. : PE0451612
Theoretical MW : 487.50
Observed MW : 487.30

Interface : ESI
Nebulizing Gas Flow : 1.5L/min
CDL Temp : 250°C
Block Temp : 200°C

Interface Bias : +4.5kV
Drying Gas Flow : 5 L/min
T.Flow : 0.2ml/min
B.conc : 50%H2O/50%MeOH