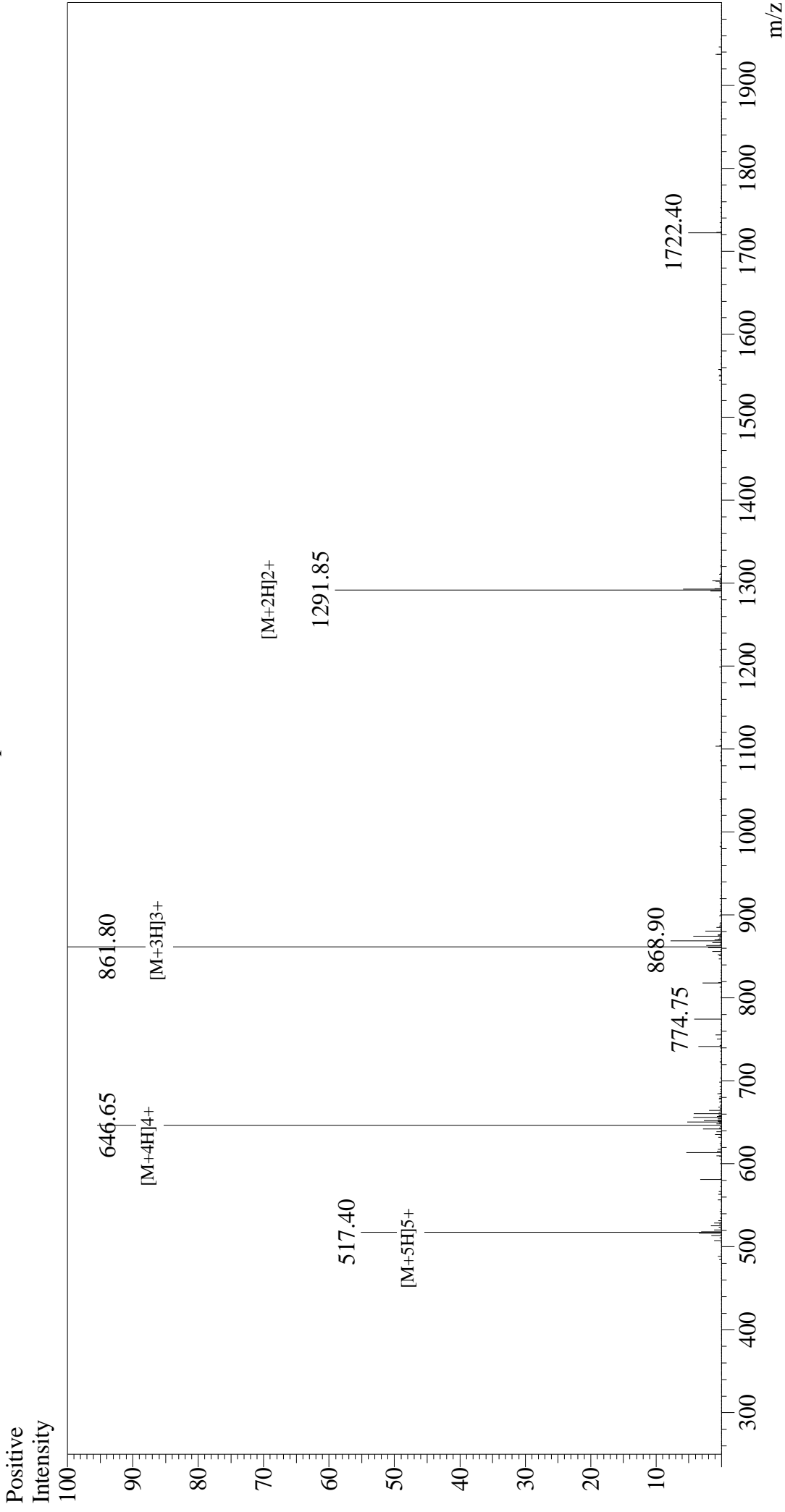


Mass Spectrum



Sample Information

Acquired by : Gary
Month-Day Processed : 08/29/17
Time Processed : 16:52:13
Injection Volume : 0.2
Sample Name : MOG(35-55)
Sample ID : U9776CH270-1
Theoretical MW : 2581.98
Observed MW : 2582.40

Interface : ESI
Nebulizing Gas Flow : 1.5L/min
CDL Temp : 250°C
Block Temp : 200°C

Interface Bias : +4.5 kV
Drying Gas Flow : 5 L/min
T.Flow : 0.2 ml/min
B.conc : 50% H2O/50% MeOH