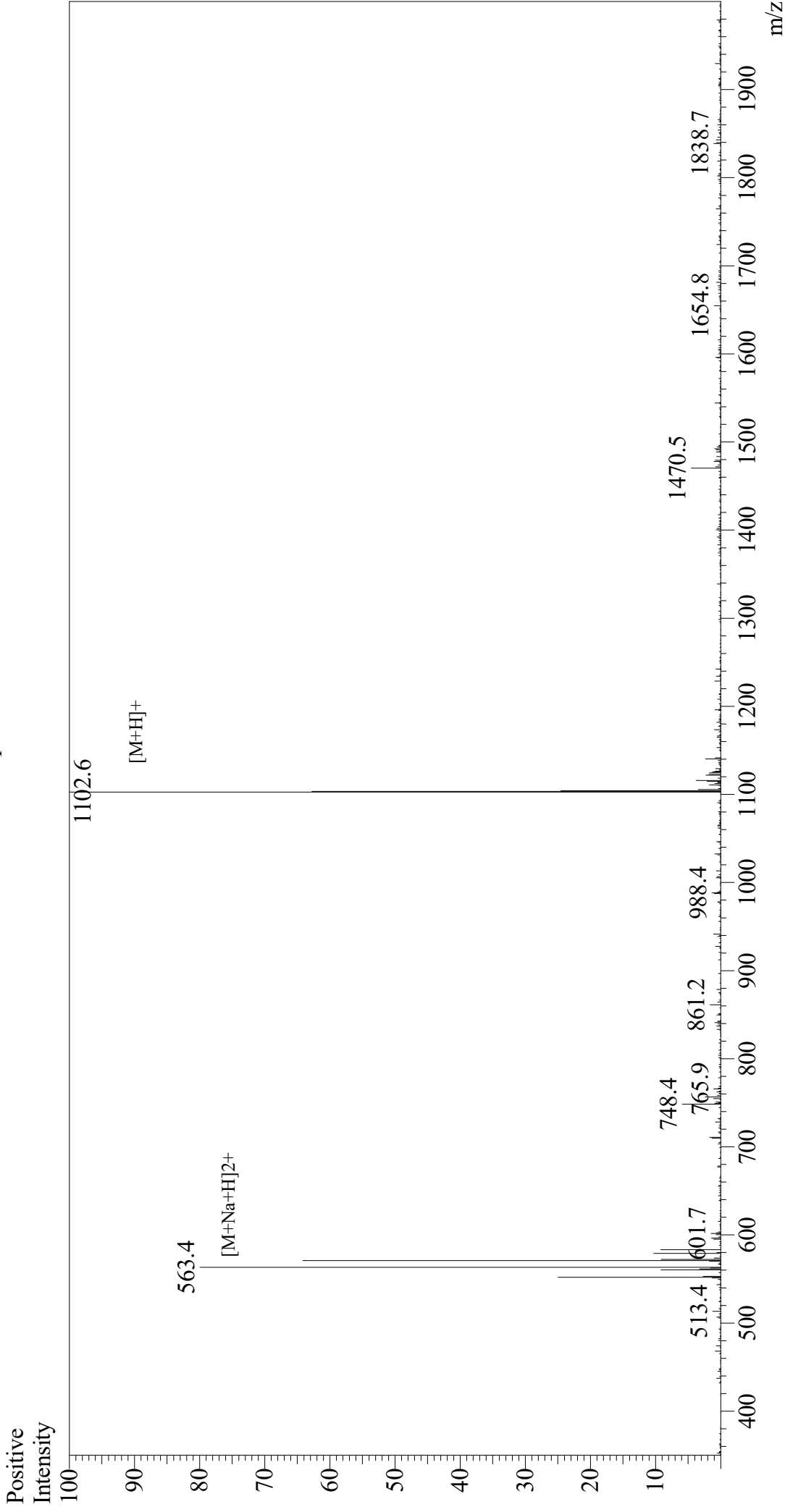


Mass Spectrum



Sample Information

Month-Day Processed :	05/03/21	Interface :	ESI	Equipment :	GK11010007
Time Processed :	13:00:40	Nebulizing Gas Flow :	1.5L/min	Interface Bias :	+4.5 kV
Injection Volume :	0.4	CDL Temp :	250	Drying Gas Flow :	5 L/min
Sample Name :	HA Peptide	Block Temp :	200	T.Flow :	0.2 ml/min
Cat. No. :	RP10586			B.conc :	50%H ₂ O/50%MeOH
Lot. No. :	E1886321C				
Theoretical MW :	1102.15				
Observed MW :	1101.6				