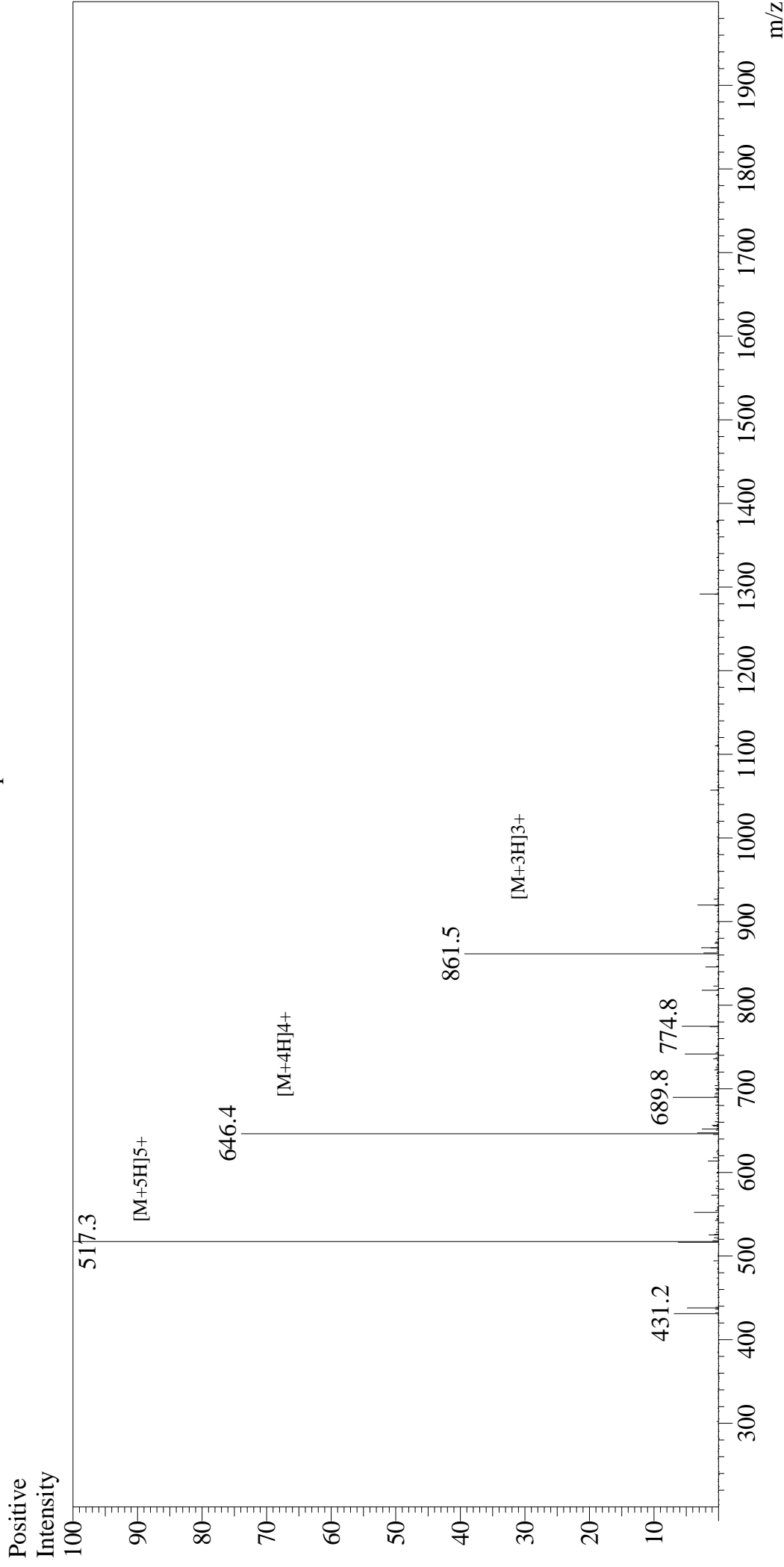


Mass Spectrum



Sample Information

User : Gary
Month-Day Processed : 03/03/20
Time Processed : 20:41:58
Injection Volume : 0.4
Sample Name : MOG(35-55)
Cat No. : RP10245
Lot No. : E478620B
Theoretical MW : 2581.98
Observed MW : 2581.5

Interface : ESI
Nebulizing Gas Flow : 1.5L/min
CDL Temp : 250
Block Temp : 200

Equipment : GK11010007
Interface Bias : +4.5kV
Drying Gas Flow : 5 L/min
T.Flow : 0.2ml/min
B.conc : 50%H2O/50%MeOH