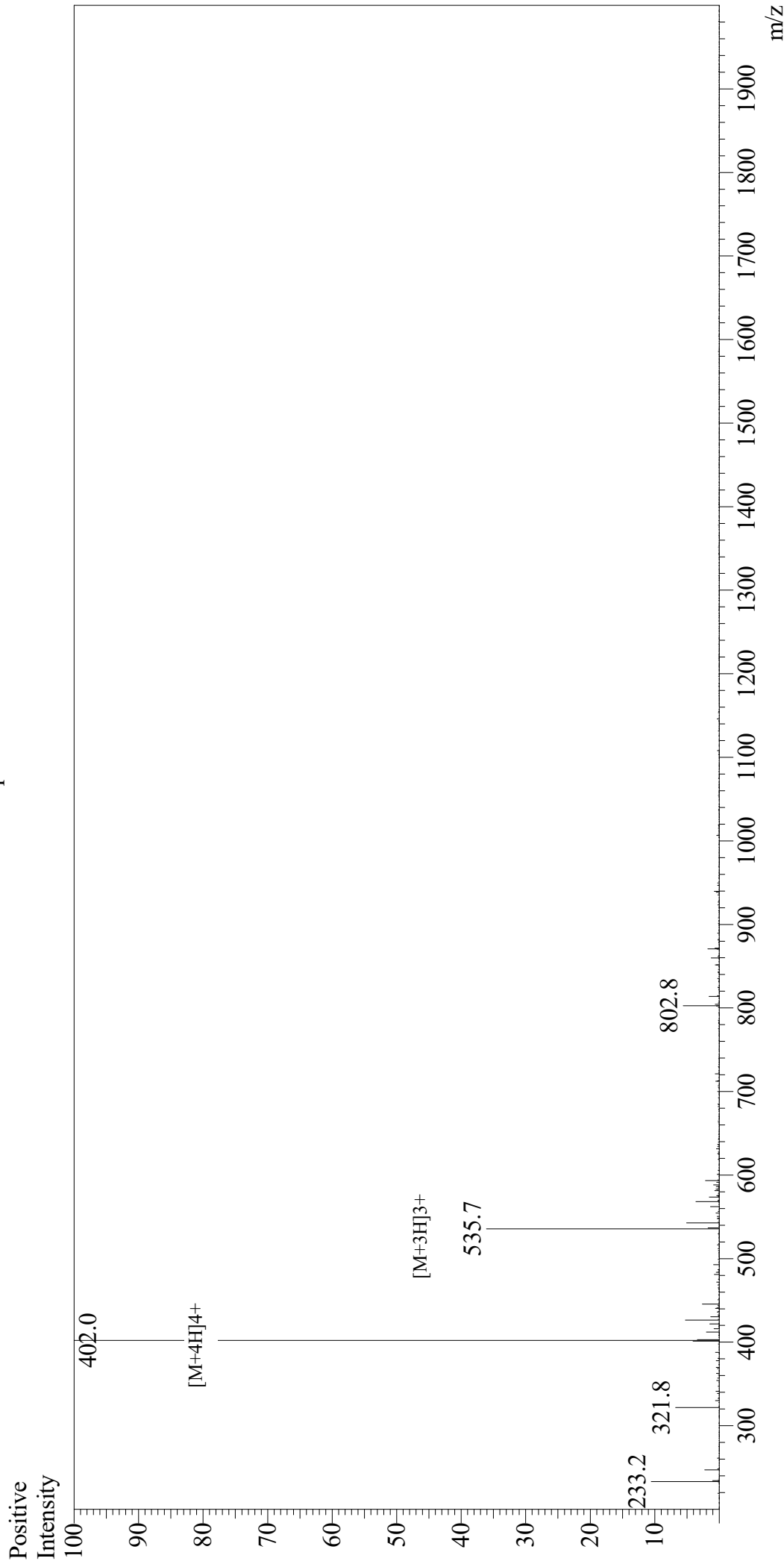


Mass Spectrum



Sample Information

User : Gary
Month-Day Processed : 12/28/19
Time Processed : 06:27:11 PM
Injection Volume : 0.3
Sample Name : Dynorphin A(1-13),porcine
Cat No. : RP20492
Lot No. : E8103119L
Theoretical MW : 1604.00
Observed MW : 1604.0

Interface : ESI
Nebulizing Gas Flow : 1.5L/min
CDL Temp : 250
Block Temp : 200

Equipment : GK11010007
Interface Bias : +4.5kV
Drying Gas Flow : 5 L/min
T.Flow : 0.2ml/min
B.conc : 50%H2O/50%MeOH