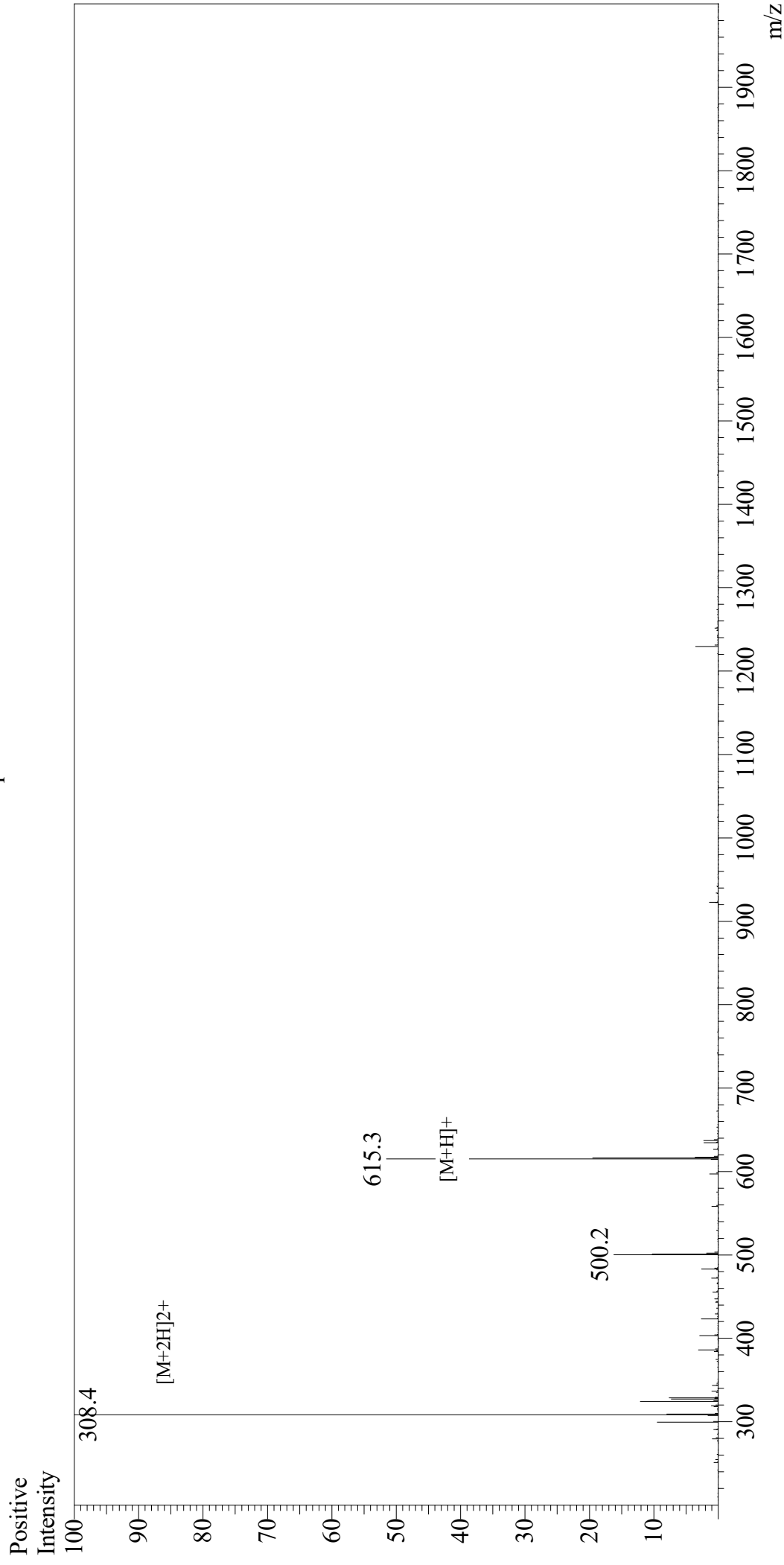


Mass Spectrum



Sample Information

User : Gary
Month-Day Processed : 12/14/18
Time Processed : 11:23:37 AM
Injection Volume : 0.1
Sample Name : Gly-Arg-Gly-Asp-Asn-Pro
Cat No. : RP10847
Lot No. : PE6931812
Theoretical MW : 614.60
Observed MW : 614.8

Interface : ESI
Nebulizing Gas Flow : 1.5L/min
CDL Temp : 250
Block Temp : 200

Equipment : GK11010007
Interface Bias : +4.5kV
Drying Gas Flow : 5 L/min
T.Flow : 0.2ml/min
B.conc : 50%H₂O/50%MeOH