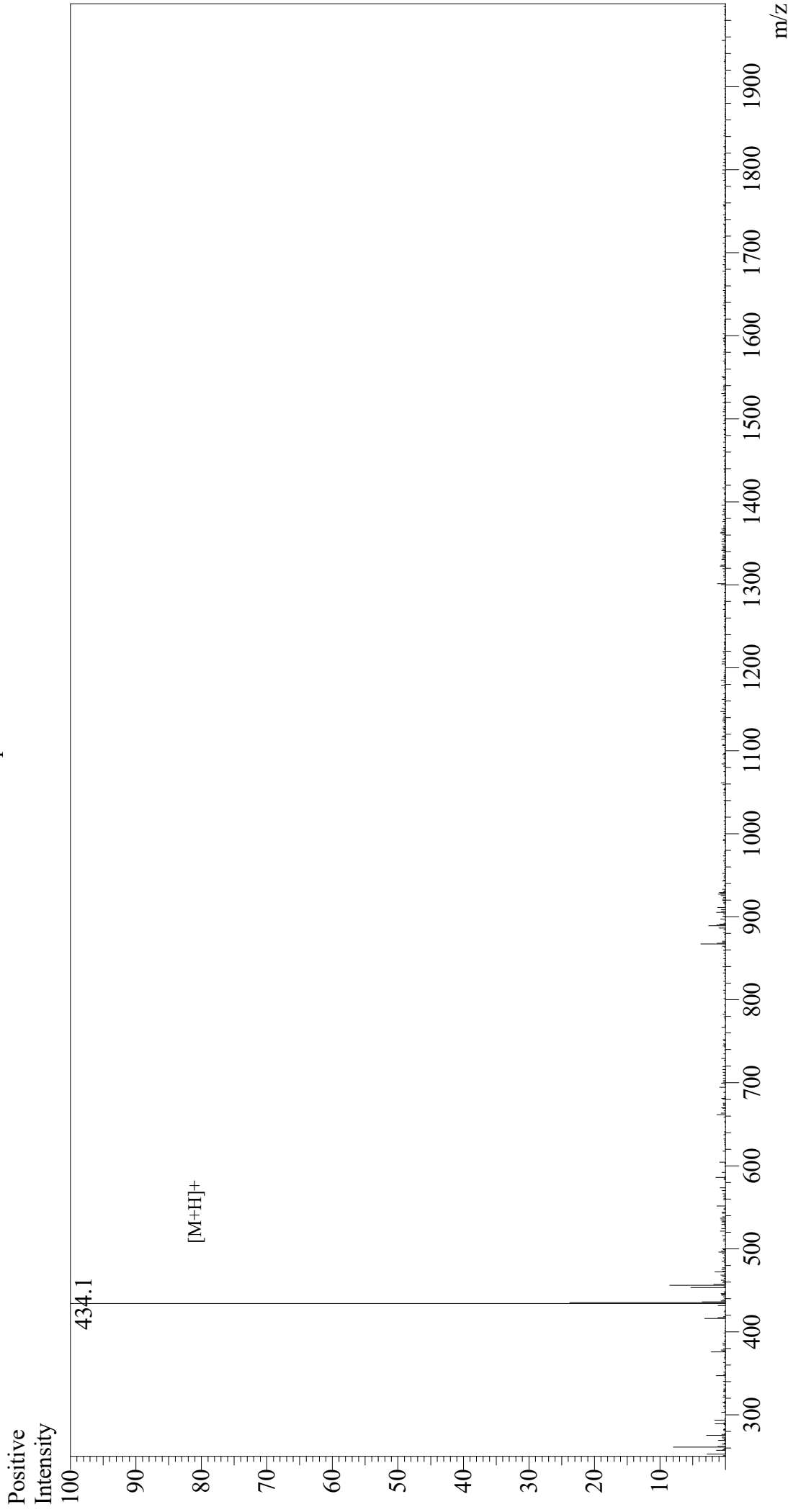


Mass Spectrum



Sample Information	Interface	: ESI
Month-Day Processed :	Nebulizing Gas Flow	: 1.5L/min
Time Processed :	CDL Temp	: 250
Injection Volume :	Block Temp	: 200
Sample Name :	Equipment	: GK11010007
Cat No. :	Interface Bias	: +3.5 kV
Lot No. :	Drying Gas Flow	: 5 L/min
Theoretical MW :	T.Flow	: 0.2 ml/min
Observed MW :	B.conc	: 50% H ₂ O/50% MeOH