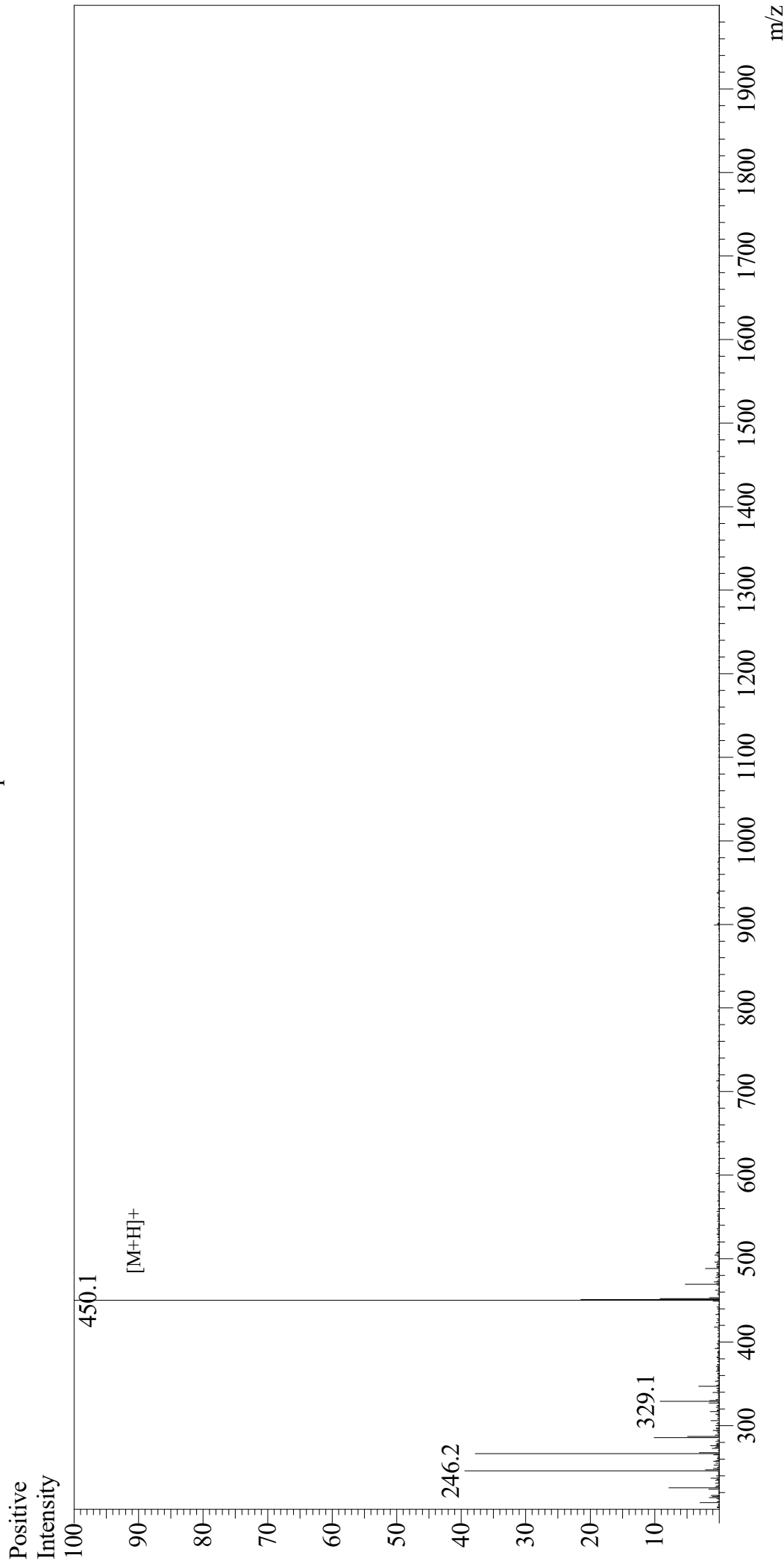


# Mass Spectrum



Sample Information  
User : Gary  
Month-Day Processed : 01/03/20  
Time Processed : 08:43:39 AM  
Injection Volume : 0.3  
Sample Name : Arg-Gly-Asp-Cys  
Cat No. : RP10860  
Lot No. : E0172520A  
Theoretical MW : 449.48  
Observed MW : 449.1

Interface : ESI  
Nebulizing Gas Flow : 1.5L/min  
CDL Temp : 250  
Block Temp : 200

Equipment : GK11010007  
Interface Bias : +4.5kV  
Drying Gas Flow : 5 L/min  
T.Flow : 0.2ml/min  
B.conc : 50%H2O/50%MeOH