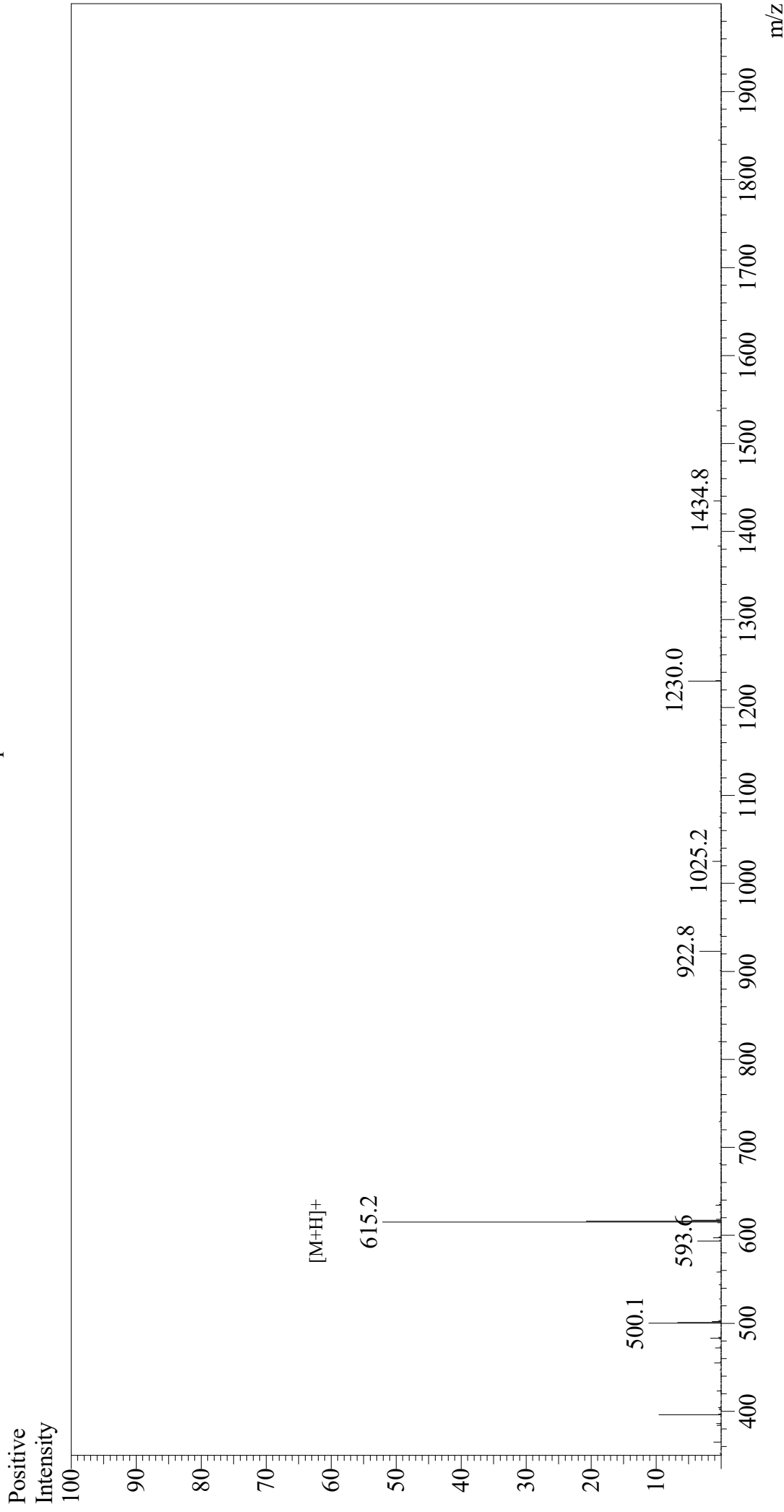


# Mass Spectrum



Sample Information  
Month-Day Processed : 05/26/21  
Time Processed : 7:51:55 AM  
Injection Volume : 0.2  
Sample Name : Gly-Arg-Gly-Asp-Asn-Pro  
Cat No : RP10847  
Lot No : E0633521E  
Theoretical MW : 614.60  
Observed MW : 614.2

Interface : ESI  
Nebulizing Gas Flow : 1.5L/min  
CDL Temp : 250  
Block Temp : 200

Equipment : GK11010007  
Interface Bias : +4.5 kV  
Drying Gas Flow : 5 L/min  
T.Flow : 0.2 ml/min  
B.conc : 50% H2O/50% MeOH