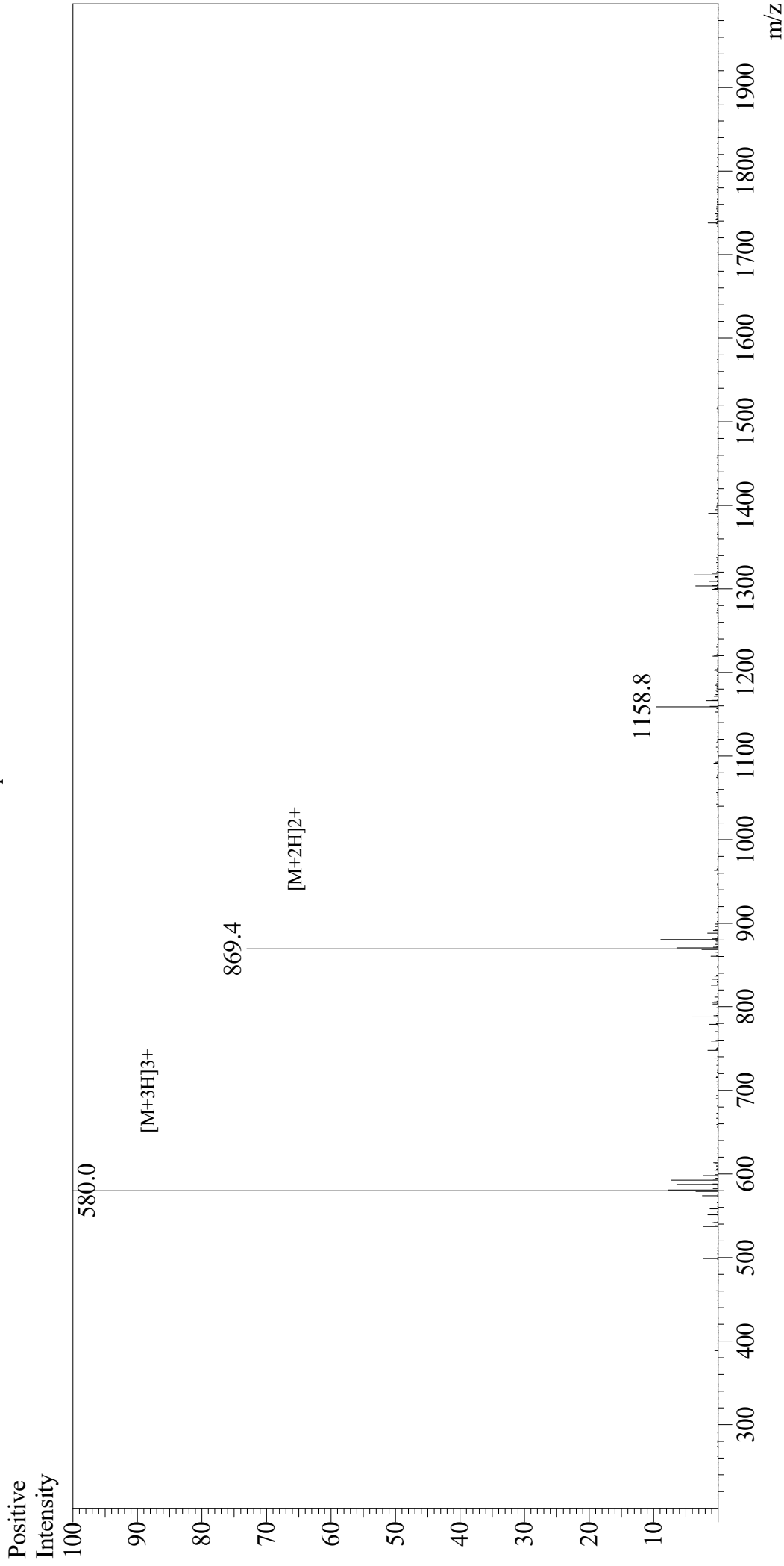


Mass Spectrum



Sample Information

User : Gary
Month-Day Processed : 01/10/19
Time Processed : 12:01:09 PM
Injection Volume : 0.2
Sample Name : Myelin Basic Protein (MBP) (68-82), guinea pig
Cat No. : RP10605
Lot No. : PE9361901
Theoretical MW : 1736.80
Observed MW : 1737.0

Interface : ESI
Nebulizing Gas Flow : 1.5L/min
CDL Temp : 250
Block Temp : 200

Equipment : GK11010007
Interface Bias : +4.5kV
Drying Gas Flow : 5 L/min
T.Flow : 0.2ml/min
B.conc : 50%H2O/50%MeOH