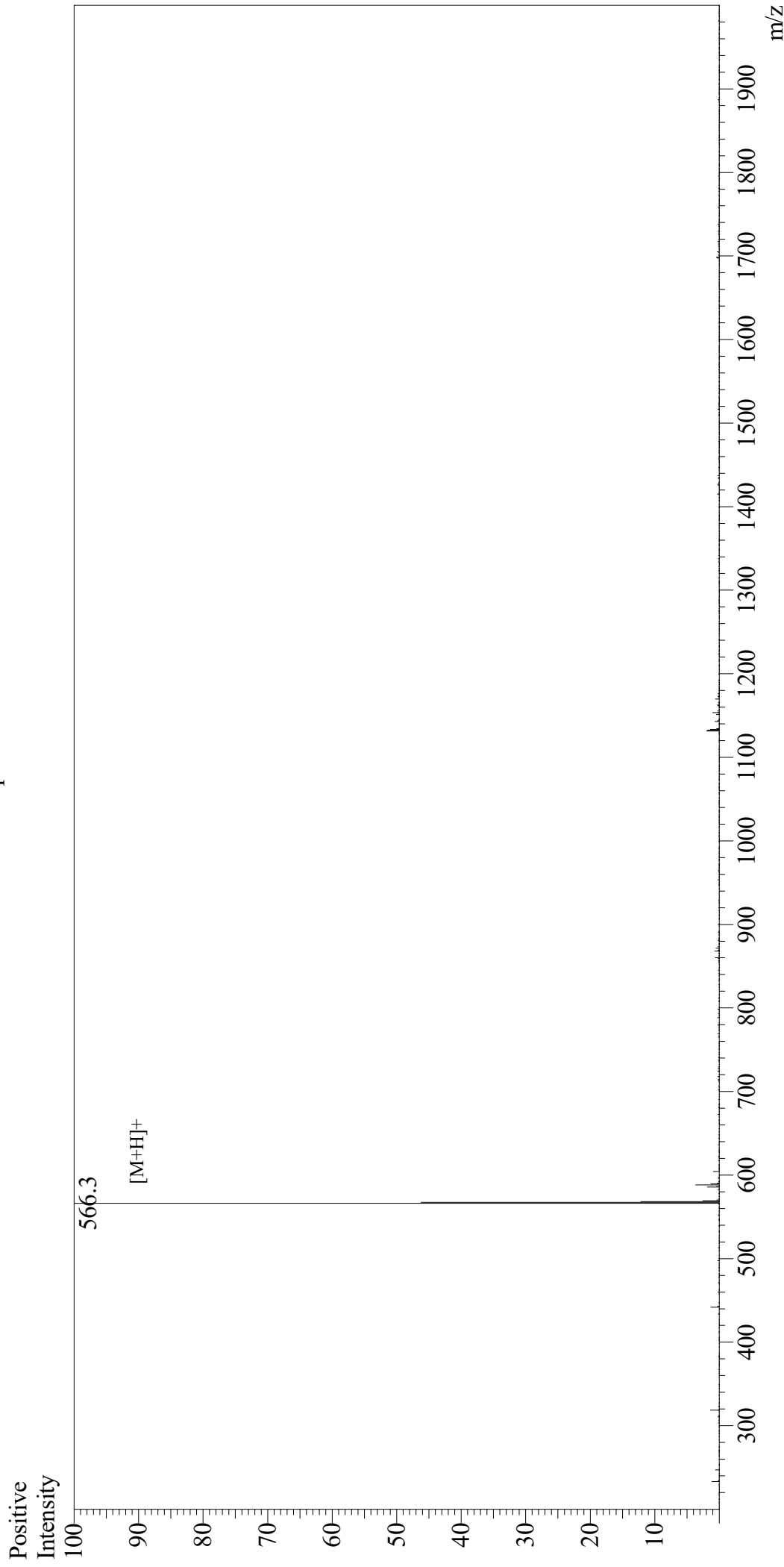


# Mass Spectrum



<b>Sample Information</b>		<b>Equipment</b>	: GK11010007
User :	Gary	Interface Bias	: +4.5kV
Month-Day Processed :	09/26/19	Drying Gas Flow	: 5 L/min
Time Processed :	05:43:07 PM	T.Flow	: 0.2ml/min
Injection Volume :	0.3	B.conc	: 50% $\text{H}_2\text{O}$ /50% $\text{MeOH}$
Sample Name :	N-Formyl-Met-Leu-Phe-Lys		
Cat No. :	RP12958		
Lot No. :	E4883419I		
Theoretical MW :	565.73		
Observed MW :	565.3		

<b>Interface</b>	: ESI
Nebulizing Gas Flow	: 1.5L/min
CDL Temp	: 250
Block Temp	: 200