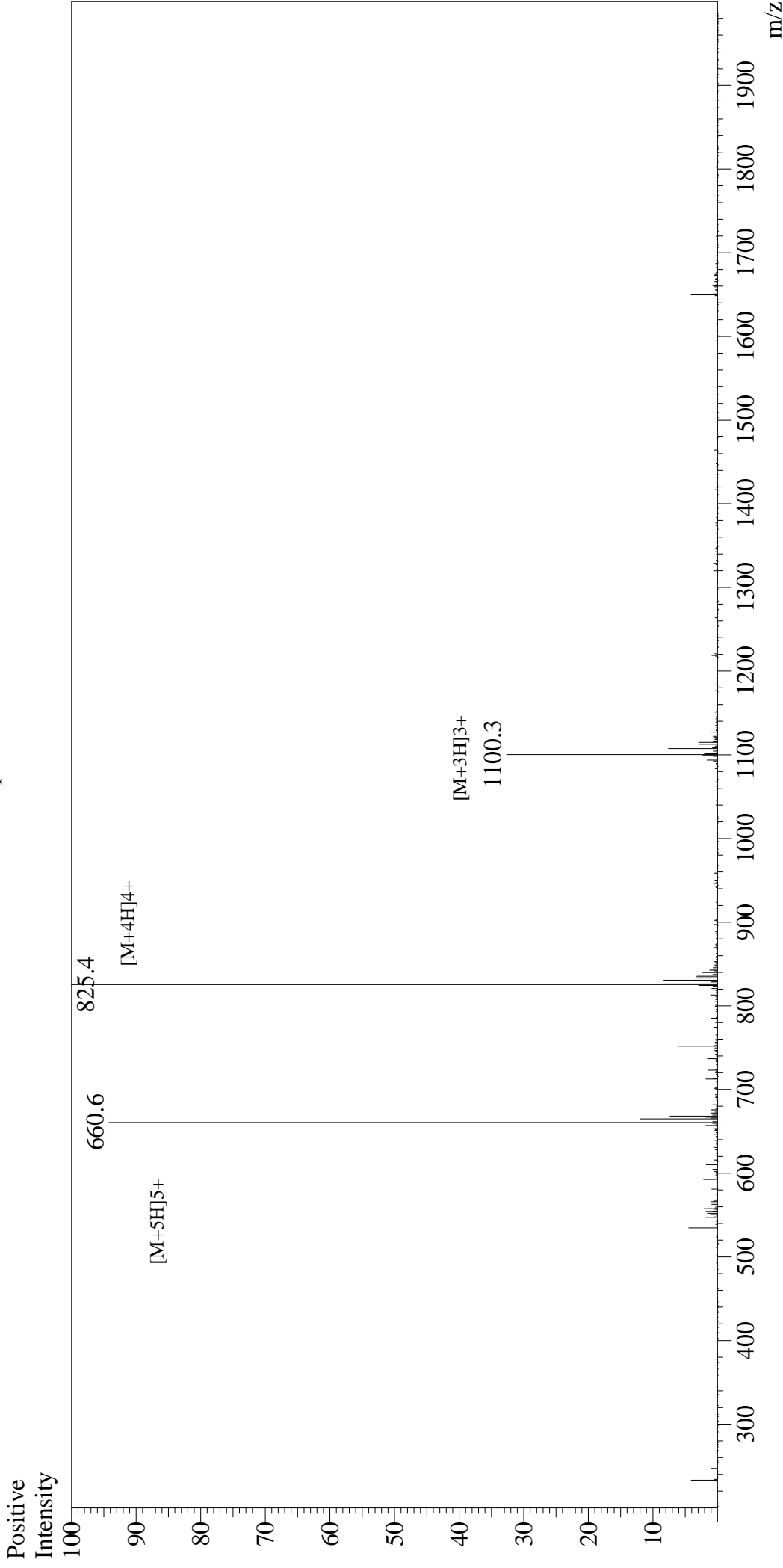


# Mass Spectrum



## Sample Information

User : Gary  
 Month-Day Processed : 12/18/19  
 Time Processed : 21:14:30  
 Injection Volume : 0.3  
 Sample Name : Glucagon-Like Peptide (GLP) I (7-36), amide, human  
 Cat No. : RP10773  
 Lot No. : E9624019L  
 Theoretical MW : 3297.50  
 Observed MW : 3297.6

Interface : ESI  
 Nebulizing Gas Flow : 1.5L/min  
 CDL Temp : 250  
 Block Temp : 200

Equipment : GK11010007  
 Interface Bias : +4.5kV  
 Drying Gas Flow : 5 L/min  
 T.Flow : 0.2ml/min  
 B.conc : 50%H2O/50%MeOH