

Sample Name :PACAP (1-38), human, ovine, rat
 Cat. No. : RP10335
 Lot. No. :E4707819I
 Time Processed :9:08:19
 Month-Day-Year Processed :10/14/2019

Pump A : 0.065% trifluoroacetic in 100% water (v/v)
 Pump B : 0.05% trifluoroacetic in 100% acetonitrile (v/v)
 Total Flow:1 ml/min
 Wavelength:220 nm

Time	Unit	Command	Value	Comment
0.01	Pumps	Pump B Conc.	5	
25.00	Pumps	Pump B Conc.	65	
25.01	Pumps	Pump B Conc.	95	
27.00	Pumps	Pump B Conc.	95	
27.01	Pumps	Pump B Conc.	5	
35.00	Pumps	Pump B Conc.	5	
35.01	Controller	Stop		

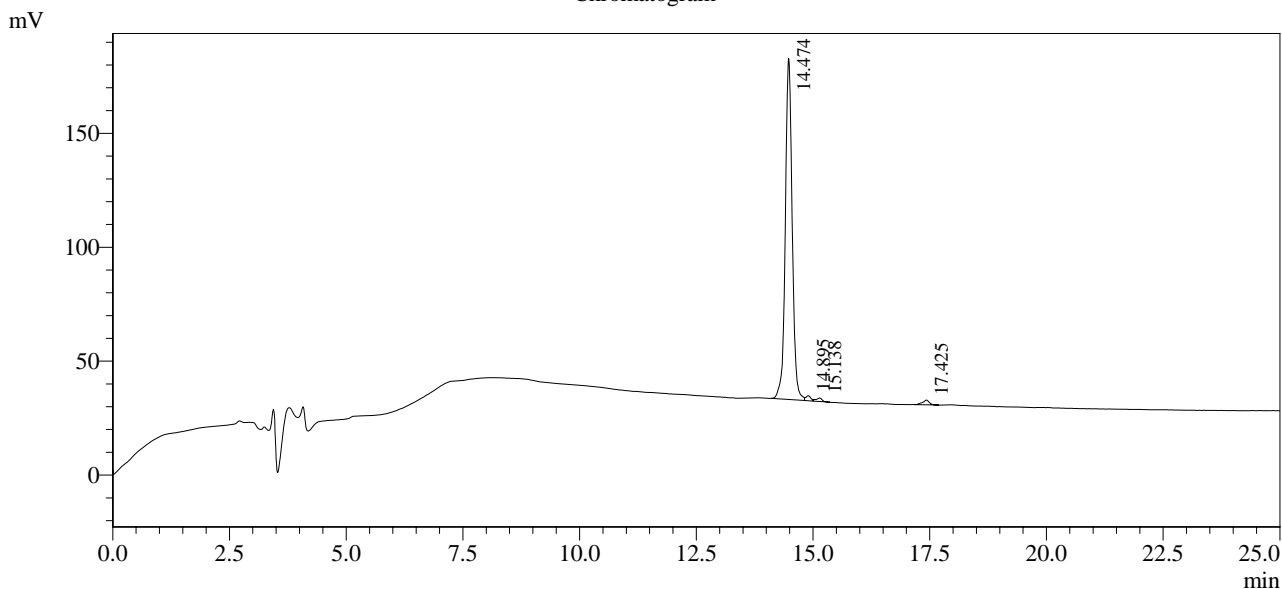
<<Column Performance>>

<Detector A>

Column : Inertsil ODS-3 4.6 x 250 mm

Equipment :SS-CM-0310

Chromatogram



1 Det.A Ch1 / 220nm

Peak Table

Detector A Ch1 220nm

Peak#	Ret. Time	Area	Height	Area %
1	14.474	1535683	149777	96.801
2	14.895	16405	2252	1.034
3	15.138	13499	1545	0.851
4	17.425	20848	2069	1.314
Total		1586435	155644	100.000