

Sample Name :Dynorphin A(1-13),porcine
 Cat No. :RP20492
 Lot No. :E3961721E
 Time Processed :7:32:00 AM
 Month-Day-Year Processed :06/04/2021

Pump A : 0.065% trifluoroacetic in 100% water (v/v)
 Pump B : 0.05% trifluoroacetic in 100% acetonitrile (v/v)
 Total Flow:1 ml/min
 Wavelength:220 nm

<<LC Time Program>>

Time	Module	Command	Value
0.01	Pumps	Pump A B.Conc	5
25.00	Pumps	Pump A B.Conc	65
25.01	Pumps	Pump A B.Conc	95
27.00	Pumps	Pump A B.Conc	95
27.01	Pumps	Pump A B.Conc	5
35.00	Pumps	Pump A B.Conc	5
35.01	Controller	Stop	

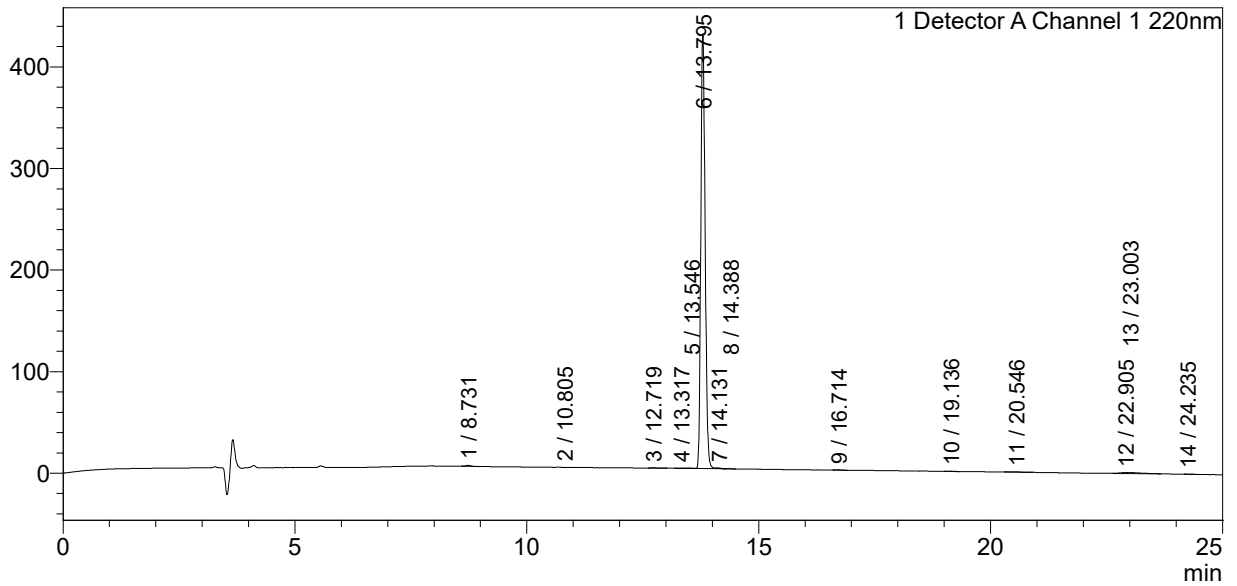
<<Column Performance>>

<Detector A>

Column :Inertsil ODS-3 4.6 x 250 mm
 Equipment: ZJ19010141

<Chromatogram>

mV



<Peak Table>

Detector A Channel 1 220nm

Peak#	Ret. Time	Area	Height	Area%
1	8.731	7625	979	0.269
2	10.805	1230	105	0.043
3	12.719	3444	440	0.122
4	13.317	3933	341	0.139
5	13.546	1777	301	0.063
6	13.795	2770952	428209	97.835
7	14.131	1478	319	0.052
8	14.388	1023	168	0.036
9	16.714	2172	295	0.077
10	19.136	2500	292	0.088
11	20.546	4840	302	0.171
12	22.905	9621	871	0.340
13	23.003	20149	962	0.711
14	24.235	1538	113	0.054

Peak#	Ret. Time	Area	Height	Area%
Total		2832283	433696	100.000