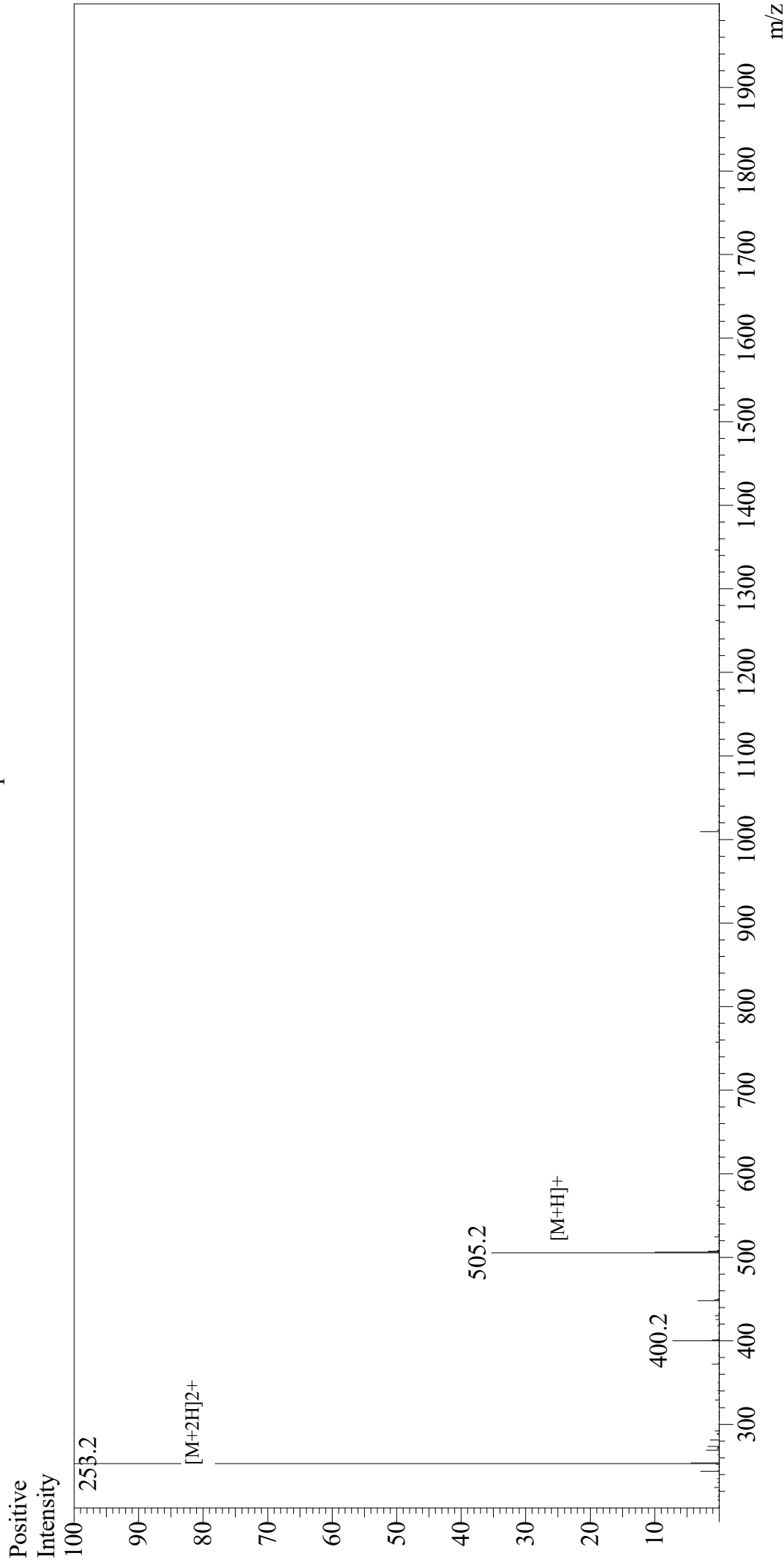


# Mass Spectrum



## Sample Information

User : Gary  
Month-Day Processed : 10/12/19  
Time Processed : 07:48:08 PM  
Injection Volume : 0.4  
Sample Name : Fibronectin Active Fragment Control  
Cat No. : RP20347  
Lot No. : E5583619J  
Theoretical MW : 504.50  
Observed MW : 504.4

Interface : ESI  
Nebulizing Gas Flow : 1.5L/min  
CDL Temp : 250  
Block Temp : 200  
Equipment : GK11010007  
Interface Bias : +4.5kV  
Drying Gas Flow : 5 L/min  
T.Flow : 0.2ml/min  
B.conc : 50%H2O/50%MeOH