

Sample Name: DYKDDDDK Peptide
 Cat. No. : RP10586
 Lot. No. : E3229619G
 Time Processed : 1:24:31 PM
 Month-Day-Year Processed : 08/02/2019

Pump A : 0.065% trifluoroacetic in 100% water (v/v)
 Pump B : 0.05% trifluoroacetic in 100% acetonitrile (v/v)
 Total Flow: 1 ml/min
 Wavelength: 220 nm

<<LC Time Program>>

| Time | Module | Command | Value |
|-------|------------|-----------------|-------|
| 0.01 | Pumps | Solvent B Conc. | 5 |
| 25.00 | Pumps | Solvent B Conc. | 65 |
| 25.01 | Pumps | Solvent B Conc. | 95 |
| 27.00 | Pumps | Solvent B Conc. | 95 |
| 27.01 | Pumps | Solvent B Conc. | 5 |
| 35.00 | Pumps | Solvent B Conc. | 5 |
| 35.01 | Controller | Stop | |

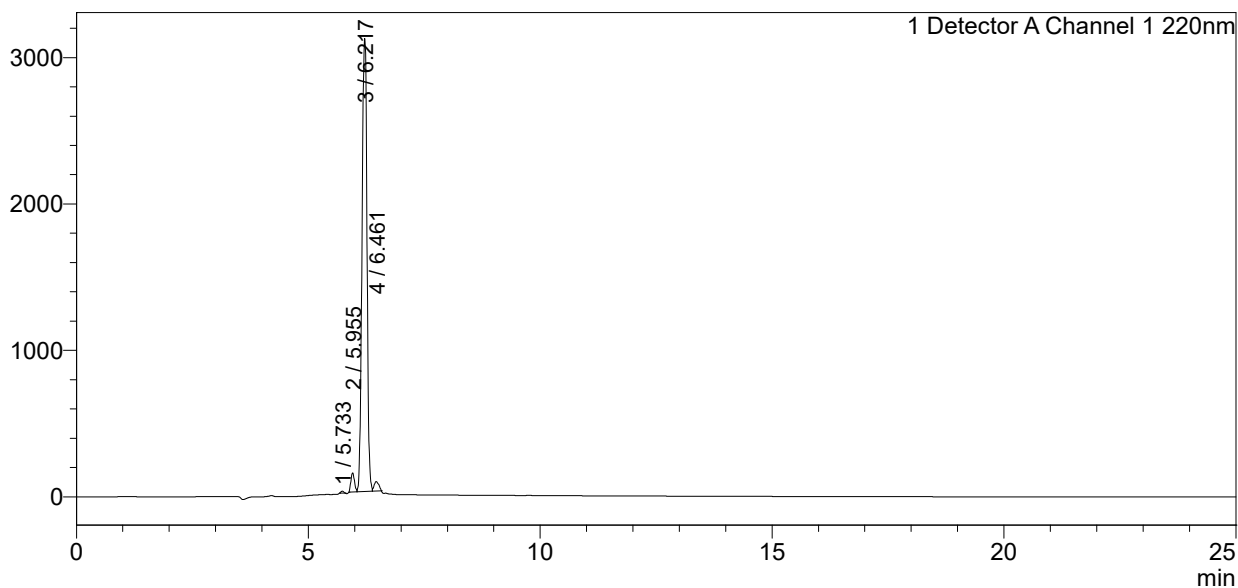
<<Column Performance>>

<Detector A>

Column : Inertsil ODS-3 4.6 x 250 mm
 Equipment: ZJ19010141

<Chromatogram>

mV



<Peak Table>

Detector A Channel 1 220nm

| Peak# | Ret. Time | Area | Height | Area% |
|-------|-----------|----------|---------|---------|
| 1 | 5.733 | 55500 | 13257 | 0.228 |
| 2 | 5.955 | 694870 | 130592 | 2.851 |
| 3 | 6.217 | 23156406 | 3094627 | 95.009 |
| 4 | 6.461 | 465985 | 64784 | 1.912 |
| Total | | 24372762 | 3303260 | 100.000 |