

Sample Name : PKG Substrate
 Cat. No. : RP20112
 Lot. No. : PE1031903
 Time Processed : 11:20:00
 Month-Day-Year Processed : 03/21/2019

Pump A : 0.065% trifluoroacetic in 100% water (v/v)
 Pump B : 0.05% trifluoroacetic in 100% acetonitrile (v/v)
 Total Flow: 1 ml/min
 Wavelength: 220 nm

| Time | Unit | Command | Value | Comment |
|-------|------------|--------------|-------|---------|
| 0.01 | Pumps | Pump B Conc. | 5 | |
| 25.00 | Pumps | Pump B Conc. | 65 | |
| 25.01 | Pumps | Pump B Conc. | 95 | |
| 27.00 | Pumps | Pump B Conc. | 95 | |
| 27.01 | Pumps | Pump B Conc. | 5 | |
| 35.00 | Pumps | Pump B Conc. | 5 | |
| 35.01 | Controller | Stop | | |

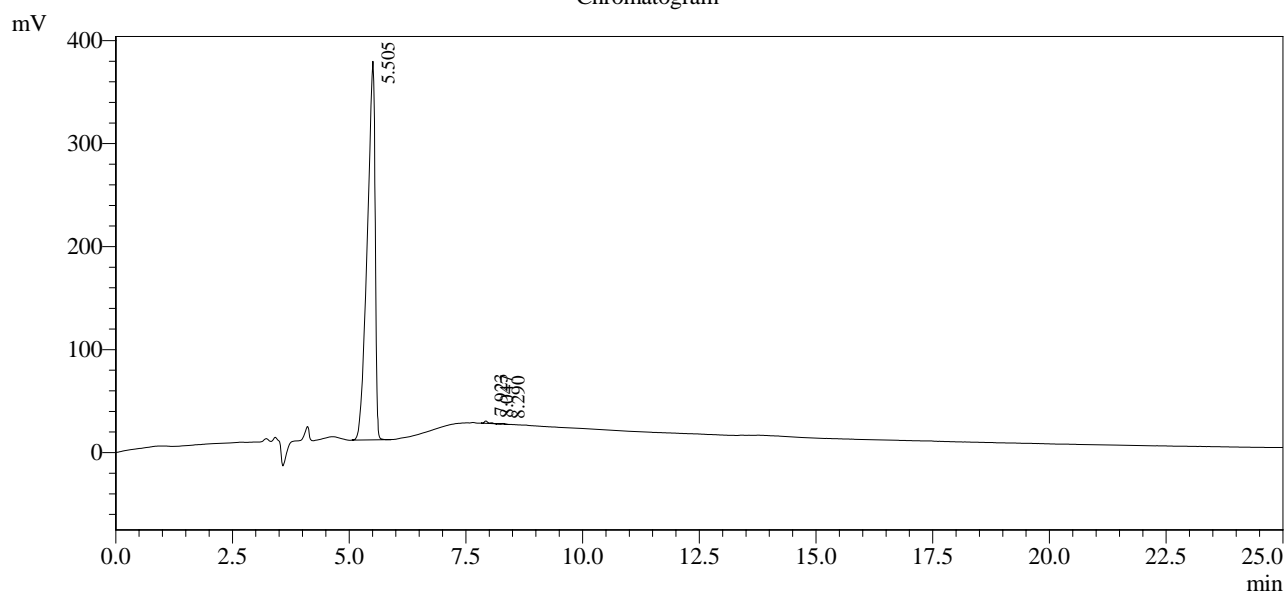
<<Column Performance>>

<Detector A>

Column : Inertsil ODS-3 4.6 x 250 mm

Equipment: SS-CM-0309

Chromatogram



1 Det.A Ch1 / 220nm

Peak Table

Detector A Ch1 220nm

| Peak# | Ret. Time | Area | Height | Area % |
|-------|-----------|---------|--------|---------|
| 1 | 5.505 | 4305276 | 367644 | 99.559 |
| 2 | 7.923 | 11399 | 2315 | 0.264 |
| 3 | 8.047 | 3657 | 798 | 0.085 |
| 4 | 8.290 | 4023 | 672 | 0.093 |
| Total | | 4324355 | 371430 | 100.000 |