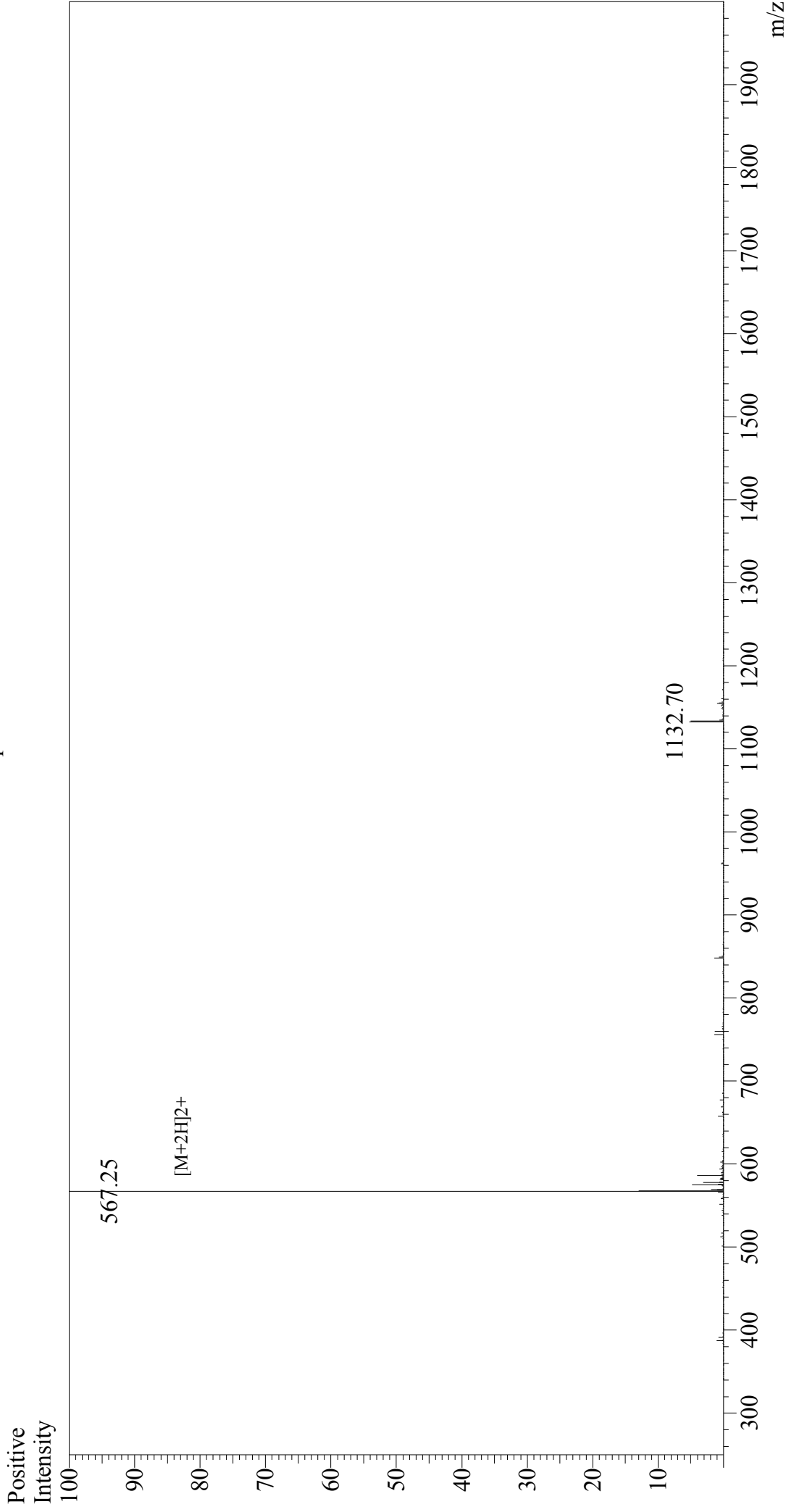


# Mass Spectrum



## Sample Information

Acquired by : Gary  
Month-Day Processed : 05/28/18  
Time Processed : 17:24:47  
Injection Volume : 0.2  
Sample Name : Neuromedin B  
Cat. No. : RP10507  
Lot. No. : PE5321805  
Theoretical MW : 1132.30  
Observed MW : 1132.50

Interface : ESI  
Nebulizing Gas Flow : 1.5L/min  
CDL Temp : 250°C  
Block Temp : 200°C

Interface Bias : +4.5 kV  
Drying Gas Flow : 5 L/min  
T.Flow : 0.2 ml/min  
B.conc : 50% $\text{H}_2\text{O}$ /50% $\text{MeOH}$