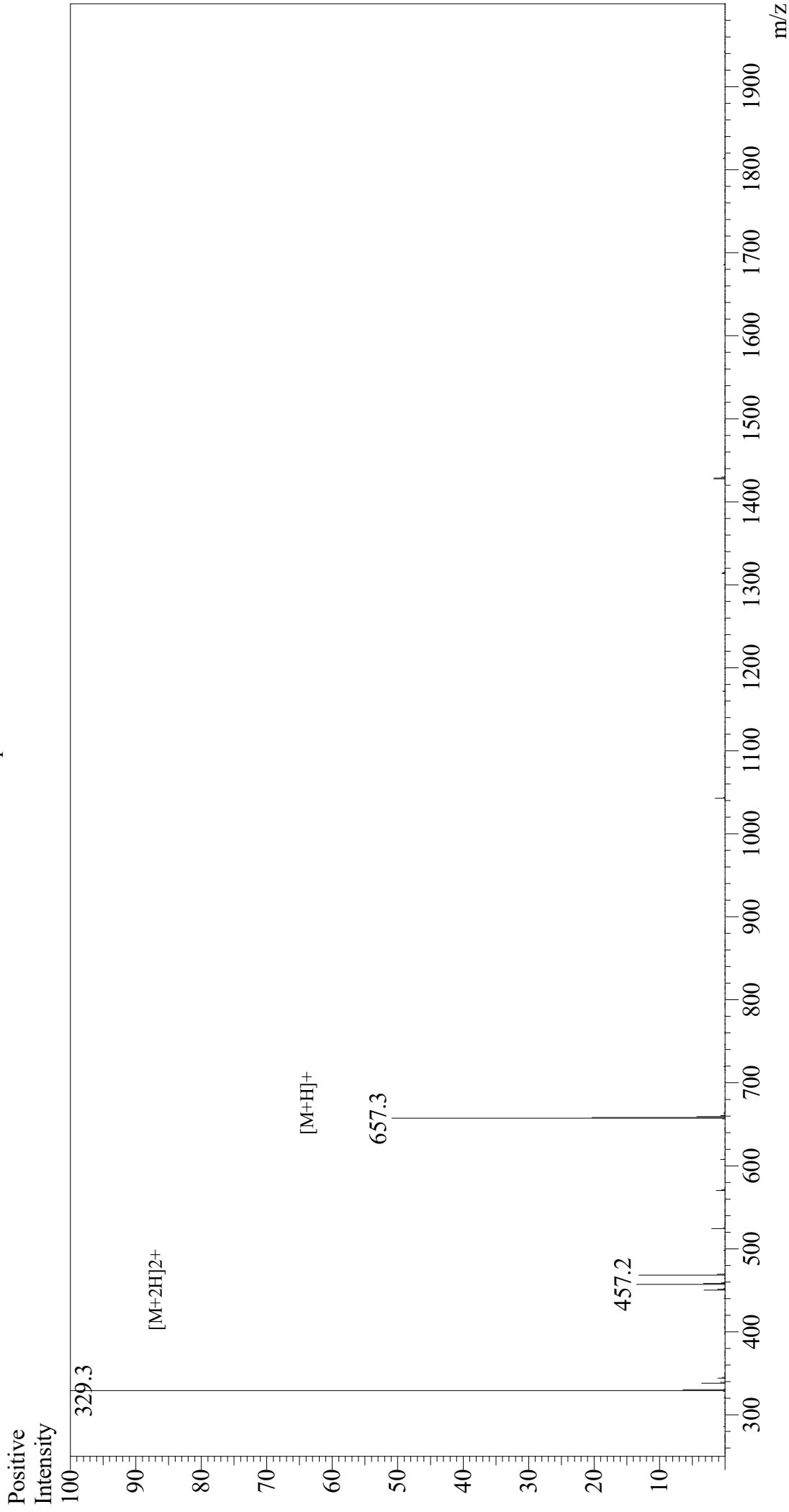


# Mass Spectrum



## Sample Information

Month-Day Processed : 03/10/21  
Time Processed : 10:09:28 AM  
Injection Volume : 0.6  
Sample Name : PAR2 AP  
Cat No. : RP19975  
Lot No. : E8098821C  
Theoretical MW : 656.83  
Observed MW : 656.6

Interface : ESI  
Nebulizing Gas Flow : 1.5L/min  
CDL Temp : 250  
Block Temp : 200

Equipment : GK11010007  
Interface Bias : +3.5 kV  
Drying Gas Flow : 5 L/min  
T.Flow : 0.2 ml/min  
B.conc : 50%H2O/50%MeOH