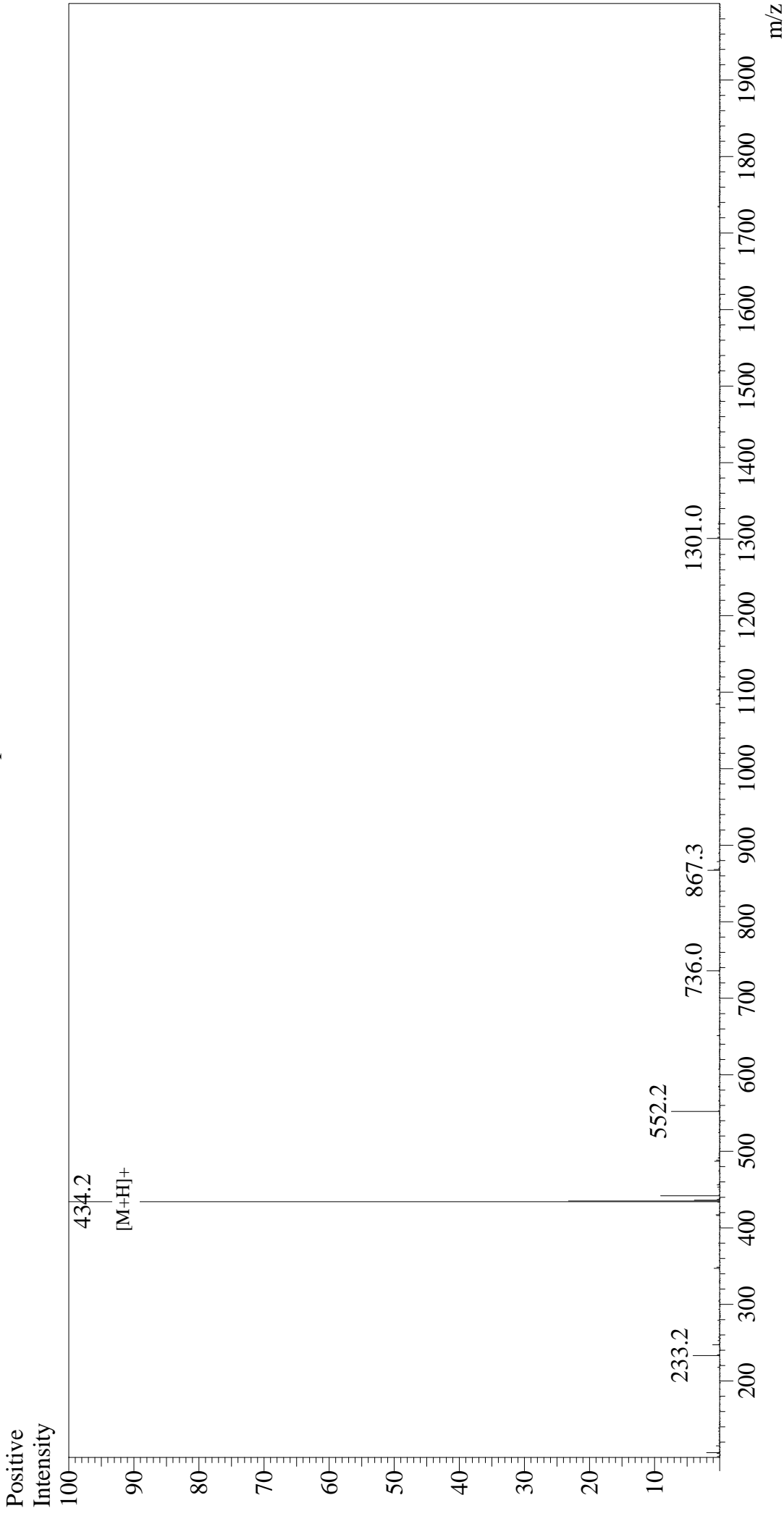


Mass Spectrum



Sample Information

Acquired by : Gary
Month-Day Processed : 11/12/19
Time Processed : 19:26:41
Injection Volume : 0.3
Sample Name : Arg-Gly-Asp-Ser
Sample ID : U8846EK070-1
Theoretical MW : 433.42
Observed MW : 433.2

Interface : ESI
Nebulizing Gas Flow : 1.5L/min
CDL Temp : 250
Block Temp : 200

Equipment : GK11010007
Interface Bias : +4.5 kV
Drying Gas Flow : 5 L/min
T.Flow : 0.2 ml/min
B.conc : 50% H₂O/50% MeOH