

Sample Name: Myelin Basic Protein (MBP) (68-82), guinea pig
 Cat No. : RP10605
 Lot No. : E2591820C
 Time Processed: 6:40:55 PM
 Month-Day-Year Processed :03/27/2020

Pump A : 0.065% trifluoroacetic in 100% water (v/v)
 Pump B : 0.05% trifluoroacetic in 100% acetonitrile (v/v)
 Total Flow: 1 ml/min
 Wavelength: 220 nm

<<LC Time Program>>

Time	Module	Command	Value
0.01	Pumps	Solvent B Conc.	5
25.00	Pumps	Solvent B Conc.	65
25.01	Pumps	Solvent B Conc.	95
31.00	Pumps	Solvent B Conc.	95
31.01	Pumps	Solvent B Conc.	5
40.00	Pumps	Solvent B Conc.	5
40.01	Controller	Stop	

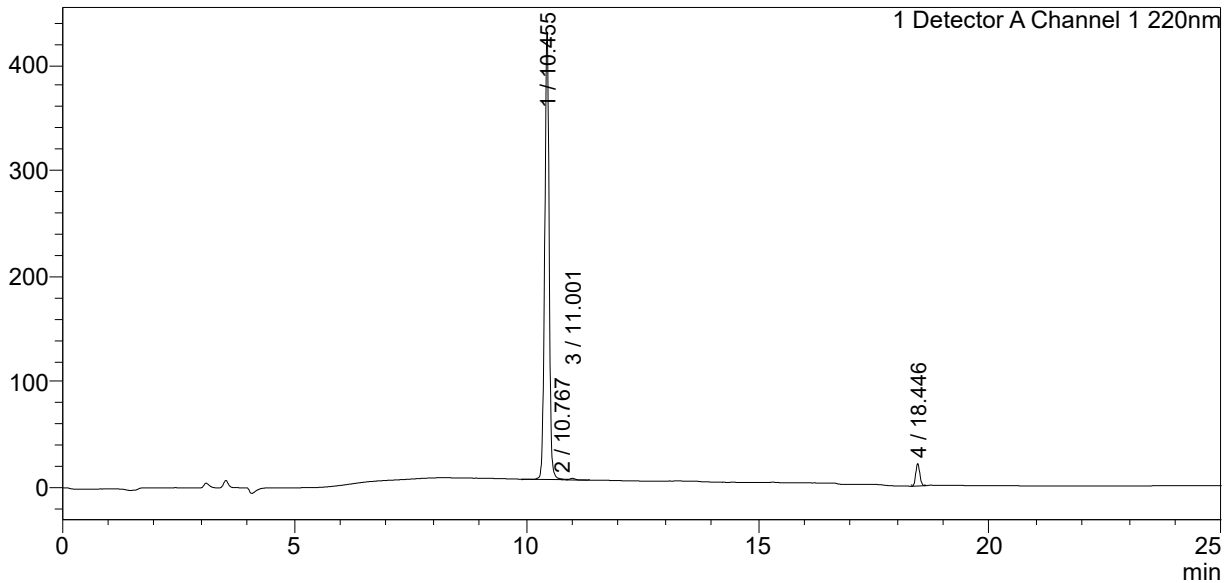
<<Column Performance>>

<Detector A>

Column : Alltima™ C18 4.6 x 250 mm
 Equipment: ZJ19010325

<Chromatogram>

mV



<Peak Table>

Detector A Channel 1 220nm

Peak#	Ret. Time	Area	Height	Area%
1	10.455	2798302	423237	95.150
2	10.767	3566	811	0.121
3	11.001	11405	1389	0.388
4	18.446	127664	21168	4.341
Total		2940937	446605	100.000