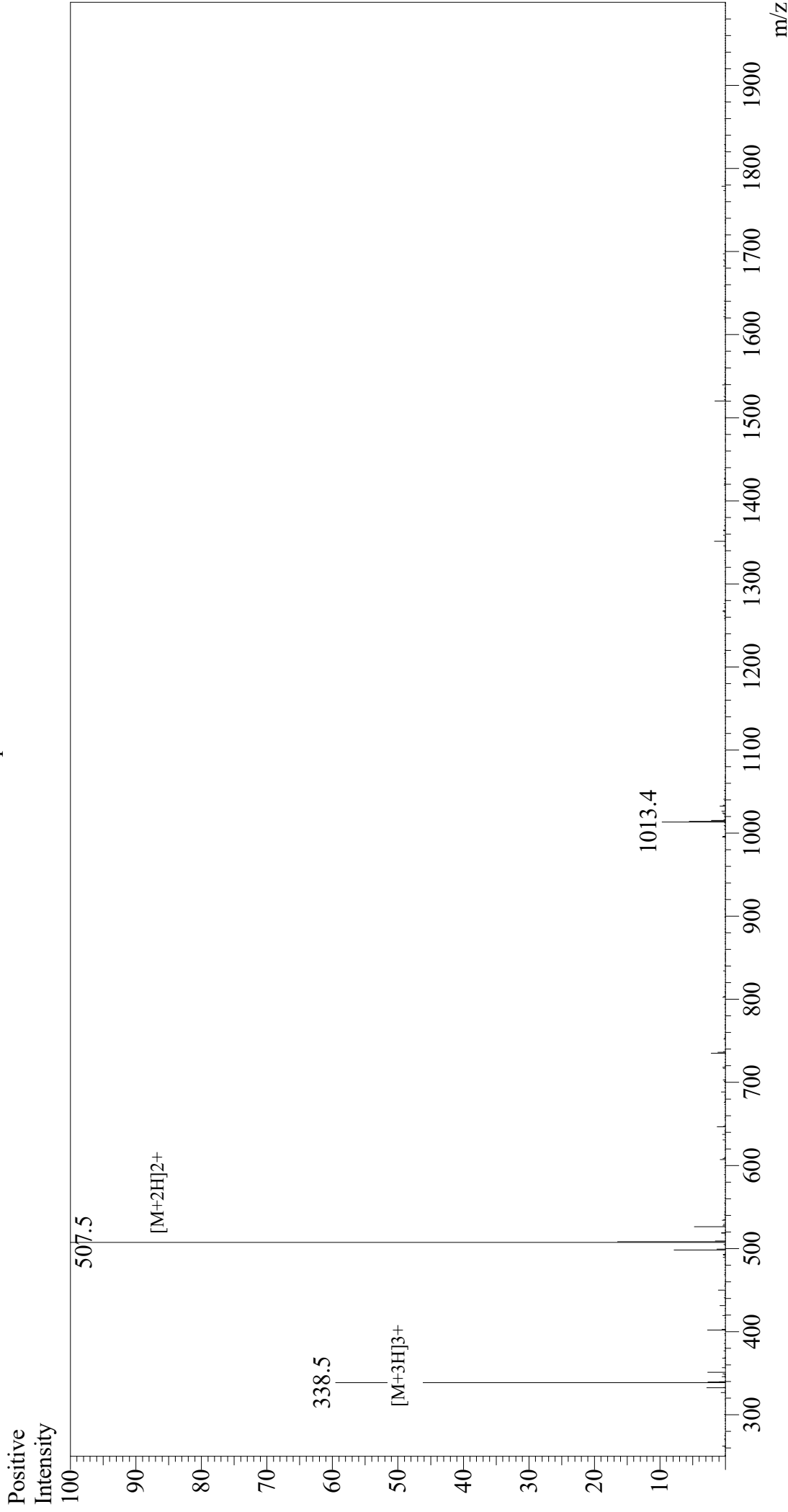


Mass Spectrum



Sample Information

Month-Day Processed : 01/30/21
Time Processed : 9:05:14 AM
Injection Volume : 0.4
Sample Name : DYKDDDDK Peptide
Cat No. : RP10586
Lot No. : E4412421A
Theoretical MW : 1012.97
Observed MW : 1013.0

Interface

Interface : ESI
Nebulizing Gas Flow : 1.5L/min
CDL Temp : 250
Block Temp : 200

Equipment

Equipment : GK11010007
Interface Bias : +3.5 kV
Drying Gas Flow : 5 L/min
T.Flow : 0.2 ml/min
B.conc : 50%H2O/50%MeOH