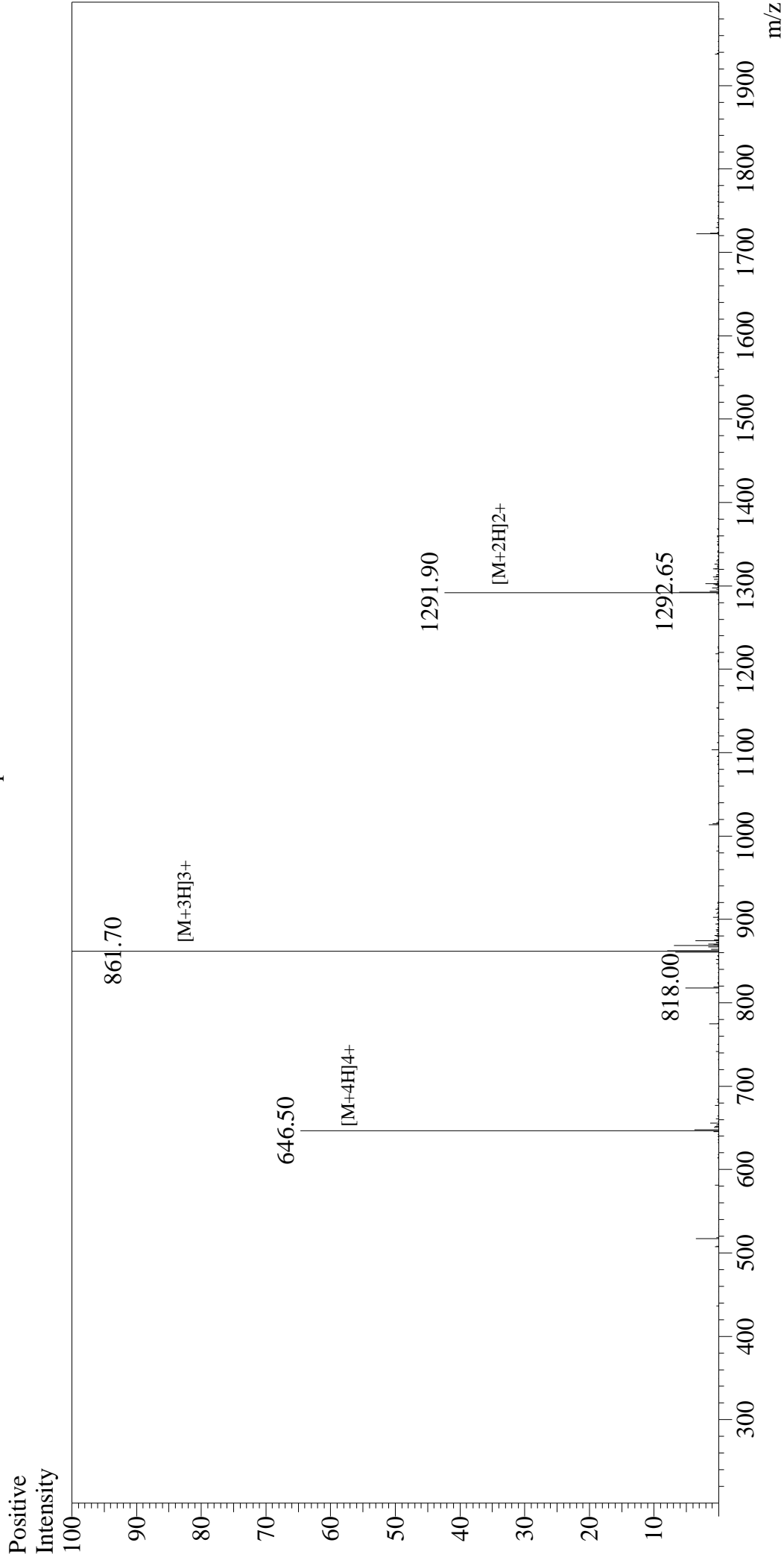


Mass Spectrum



Sample Information

User : Gary
Month-Day Processed : 02/09/17
Time Processed : 16:19:40
Injection Volume : 0.2
Sample Name : MOG(35-55)
Cat No. : RPI0245
Lot No. : PE4811702
Theoretical MW : 2581.98
Observed MW : 2582.10

Interface : ESI
Nebulizing Gas Flow : 1.5L/min
CDL Temp : 250°C
Block Temp : 200°C

Interface Bias : +4.5kV
Drying Gas Flow : 5 L/min
T.Flow : 0.2ml/min
B.conc : 50%H₂O/50%MeOH