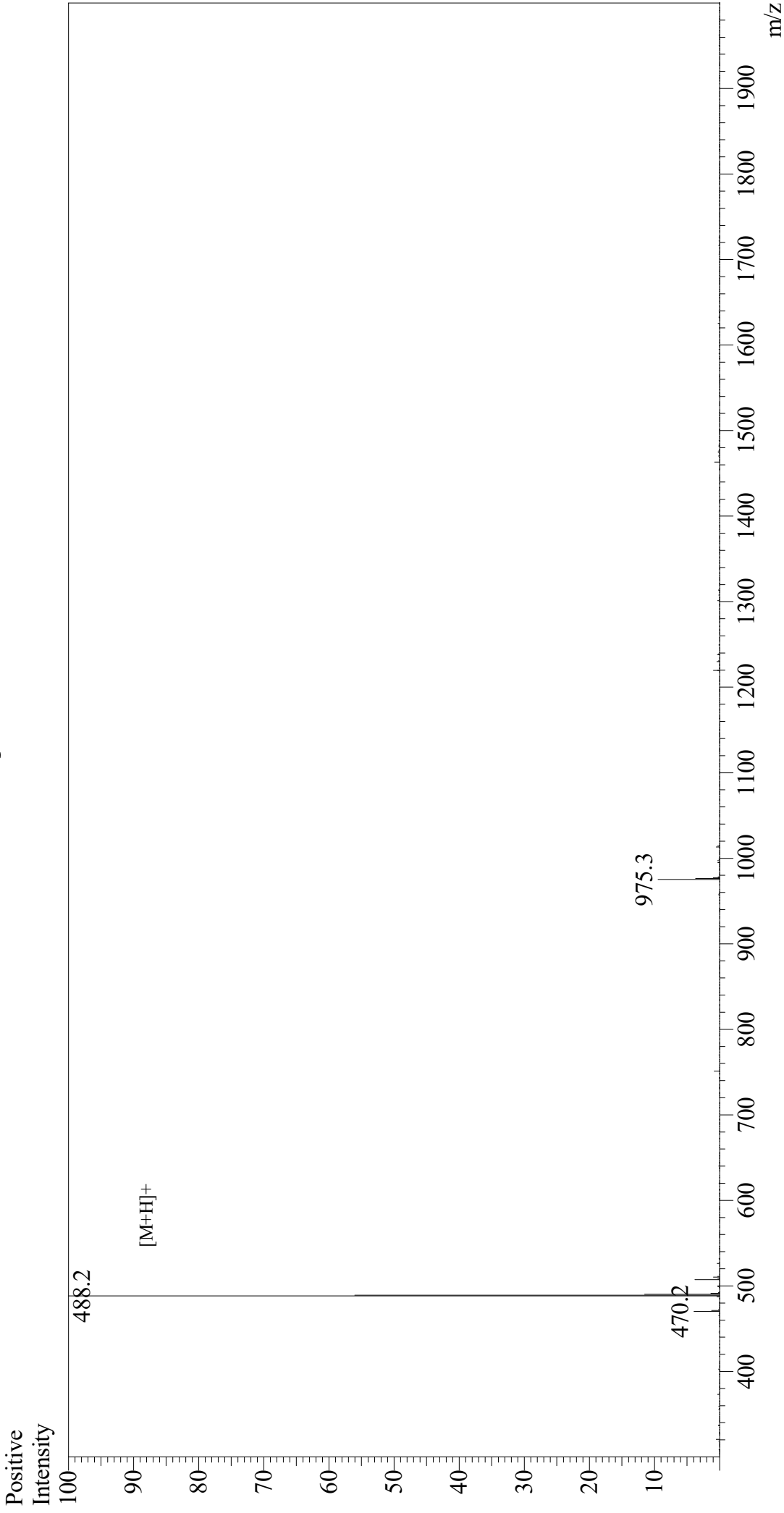


Mass Spectrum



Sample Information

Acquired by : Gary
Month-Day Processed : 03/25/19
Time Processed : 09:35:01 PM
Injection Volume : 0.2
Sample Name : N-Acetyl-Ser-Asp-Lys-Pro
Cat No. : RP10555
Lot No. : PE1101903
Theoretical MW : 487.50
Observed MW : 487.2

Interface : ESI
Nebulizing Gas Flow : 1.5L/min
CDL Temp : 250
Block Temp : 200

Equipment : GK11010007
Interface Bias : +4.5 kV
Drying Gas Flow : 5 L/min
T.Flow : 0.2 ml/min
B.conc : 50%H2O/50%MeOH