

Sample Name :Corticotropin Releasing Factor, human, rat
 Cat. No. : RP10982
 Lot. No. : E4763319I
 Time Processed :11:08:56 AM
 Month-Day-Year Processed :10/02/2019

Pump A : 0.065% trifluoroacetic in 100% water (v/v)
 Pump B : 0.05% trifluoroacetic in 100% acetonitrile (v/v)
 Total Flow:1 ml/min
 Wavelength:220 nm

<<LC Time Program>>

| Time | Module | Command | Value |
|-------|------------|-----------------|-------|
| 0.01 | Pumps | Solvent B Conc. | 5 |
| 25.00 | Pumps | Solvent B Conc. | 65 |
| 25.01 | Pumps | Solvent B Conc. | 65 |
| 31.00 | Pumps | Solvent B Conc. | 95 |
| 31.01 | Pumps | Solvent B Conc. | 5 |
| 40.00 | Pumps | Solvent B Conc. | 5 |
| 45.00 | Controller | Stop | |

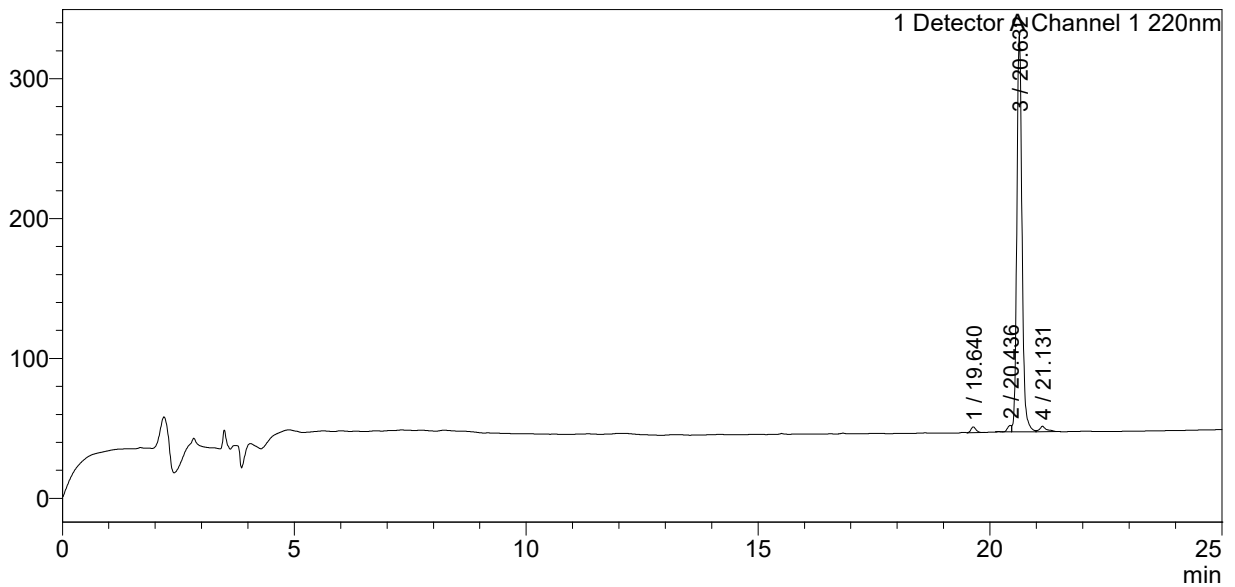
<<Column Performance>>

<Detector A>

Column : Inertsil ODS-3 4.6 x 250 mm
 Equipment:ZJ19010141

<Chromatogram>

mV



<Peak Table>

Detector A Channel 1 220nm

| Peak# | Ret. Time | Area | Height | Area% |
|-------|-----------|---------|--------|---------|
| 1 | 19.640 | 29816 | 4086 | 1.304 |
| 2 | 20.436 | 28600 | 4604 | 1.251 |
| 3 | 20.632 | 2186164 | 283473 | 95.646 |
| 4 | 21.131 | 41103 | 3936 | 1.798 |
| Total | | 2285683 | 296099 | 100.000 |