

Sample Name : Glucagon-Like Peptide (GLP) II, human
 Cat. No. : RP10769
 Lot. No. : E0854620H
 Time Processed : 15:16:34
 Month-Day-Year Processed : 08/31/2020

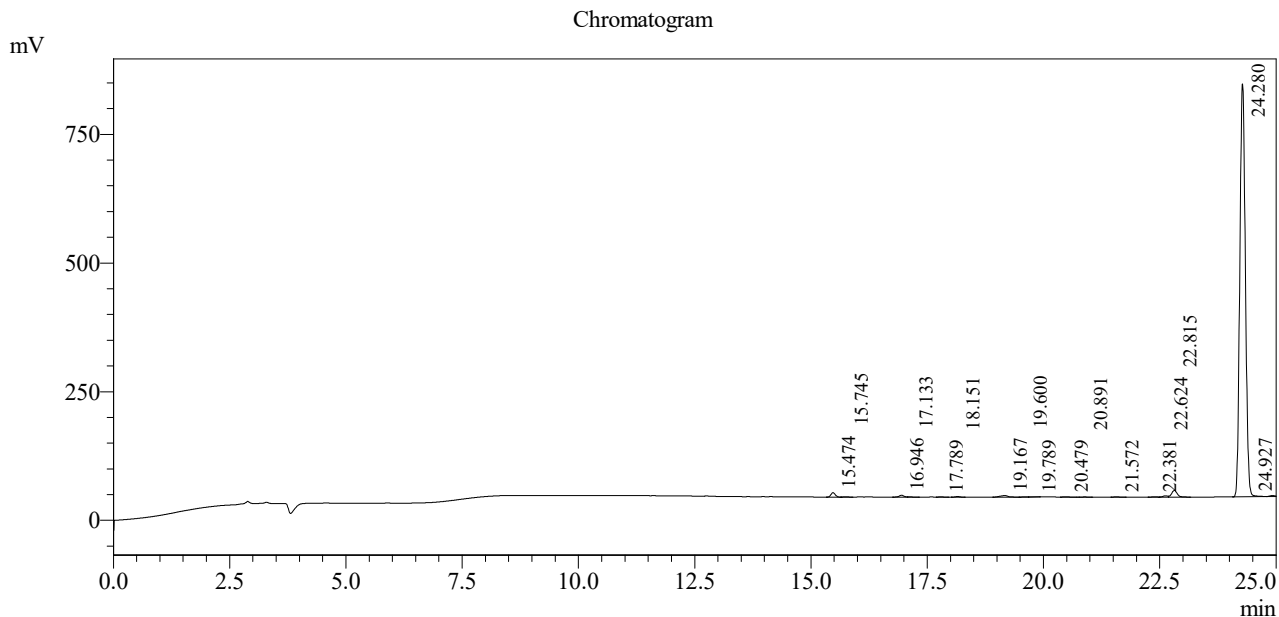
Pump A : 0.065% trifluoroacetic in 100% water (v/v)
 Pump B : 0.05% trifluoroacetic in 100% acetonitrile (v/v)
 Total Flow: 1 ml/min
 Wavelength: 220 nm

Time	Module	Command	Value
0.01	Pumps	Pump A B.Conc	5
25.00	Pumps	Pump A B.Conc	65
25.01	Pumps	Pump A B.Conc	95
31.00	Pumps	Pump A B.Conc	95
31.01	Pumps	Pump A B.Conc	5
40.00	Pumps	Pump A B.Conc	5
40.01	Controller	Stop	

<<Column Performance>>

<Detector A>

Column : Inertsil ODS-3 4.6 x 250 mm



1 Detector A Channel 1 / 220nm

Peak Table

Detector A Channel 1 220nm

Peak#	Ret. Time	Area	Height	Area %
1	15.474	53808	8430	0.772
2	15.745	3964	632	0.057
3	16.946	26557	3606	0.381
4	17.133	2536	419	0.036
5	17.789	3429	514	0.049
6	18.151	8829	1265	0.127
7	19.167	32091	2996	0.460
8	19.600	2041	302	0.029
9	19.789	4207	564	0.060
10	20.479	4575	555	0.066
11	20.891	3478	435	0.050
12	21.572	2871	395	0.041
13	22.381	4071	552	0.058
14	22.624	19149	2541	0.275
15	22.815	107501	12847	1.542
16	24.280	6671531	802377	95.684
17	24.927	21849	2135	0.313
Total		6972485	840567	100.000