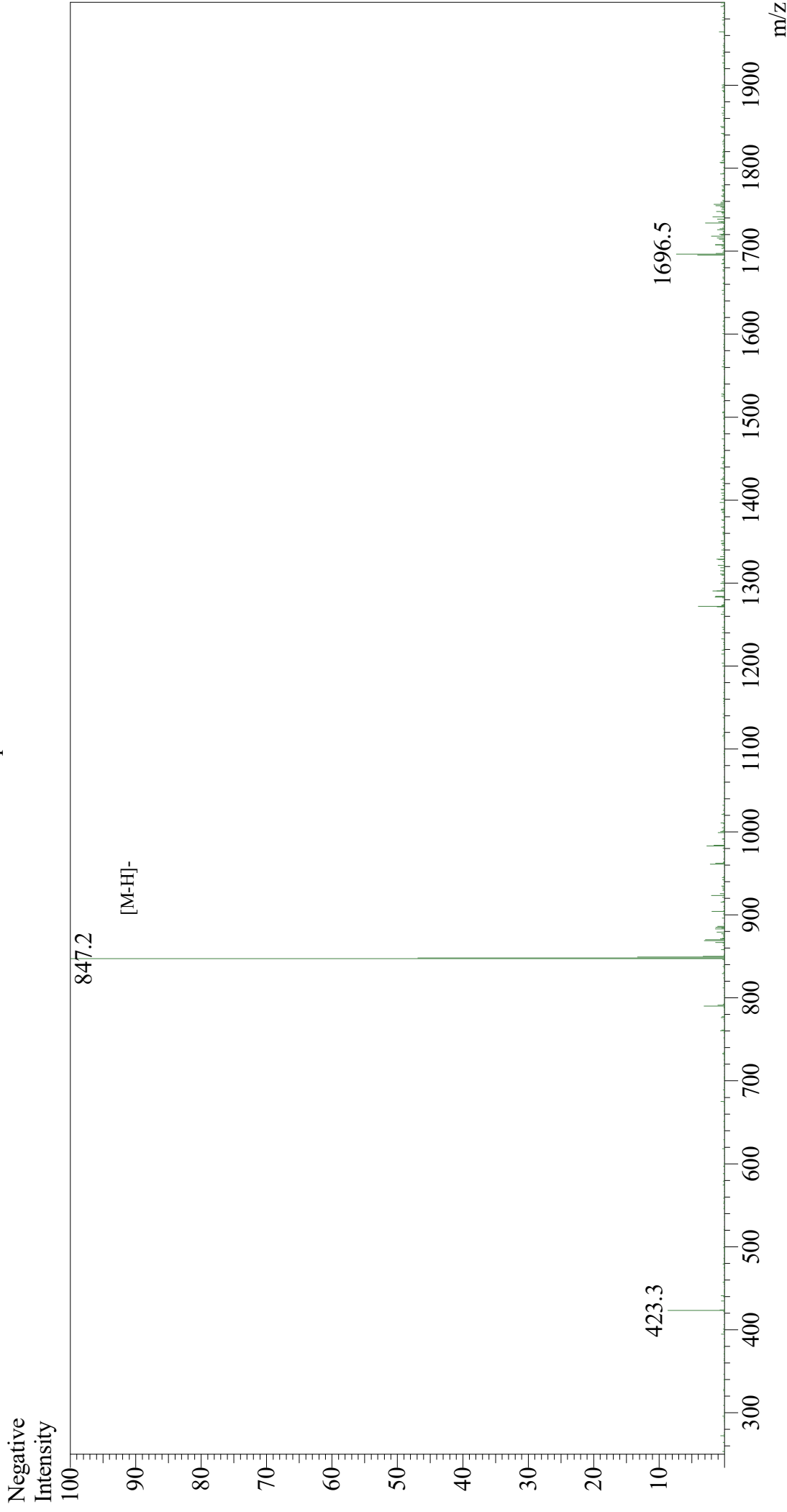


Mass Spectrum



Sample Information

User : Gary
Month-Day Processed : 10/02/19
Time Processed : 09:42:03 PM
Injection Volume : 0.3
Sample Name : δ -Sleep Inducing Peptide
Cat No. : RP10580
Lot No. : E6999619J
Theoretical MW : 848.81
Observed MW : 848.2

Interface : ESI
Nebulizing Gas Flow : 1.5L/min
CDL Temp : 250
Block Temp : 200

Equipment : GK11010007
Interface Bias : -3.5 kV
Drying Gas Flow : 5 L/min
T.Flow : 0.2 ml/min
B.conc : 50%H2O/50%MeOH