

Sample Name: Exendin (9-39)

Cat. No. : RP10872

Lot. No. : E5577319J

Time Processed :14:43:32

Month-Day-Year Processed :10/15/2019

Pump A : 0.065% trifluoroacetic in 100% water (v/v)

Pump B : 0.05% trifluoroacetic in 100% acetonitrile (v/v)

Total Flow:1 ml/min

Wavelength:220 nm

Time	Unit	Command	Value	Comment
0.01	Pumps	Pump B Conc.	5	
25.00	Pumps	Pump B Conc.	65	
25.01	Pumps	Pump B Conc.	95	
31.00	Pumps	Pump B Conc.	95	
31.01	Pumps	Pump B Conc.	5	
40.00	Pumps	Pump B Conc.	5	
41.00	Controller	Stop		

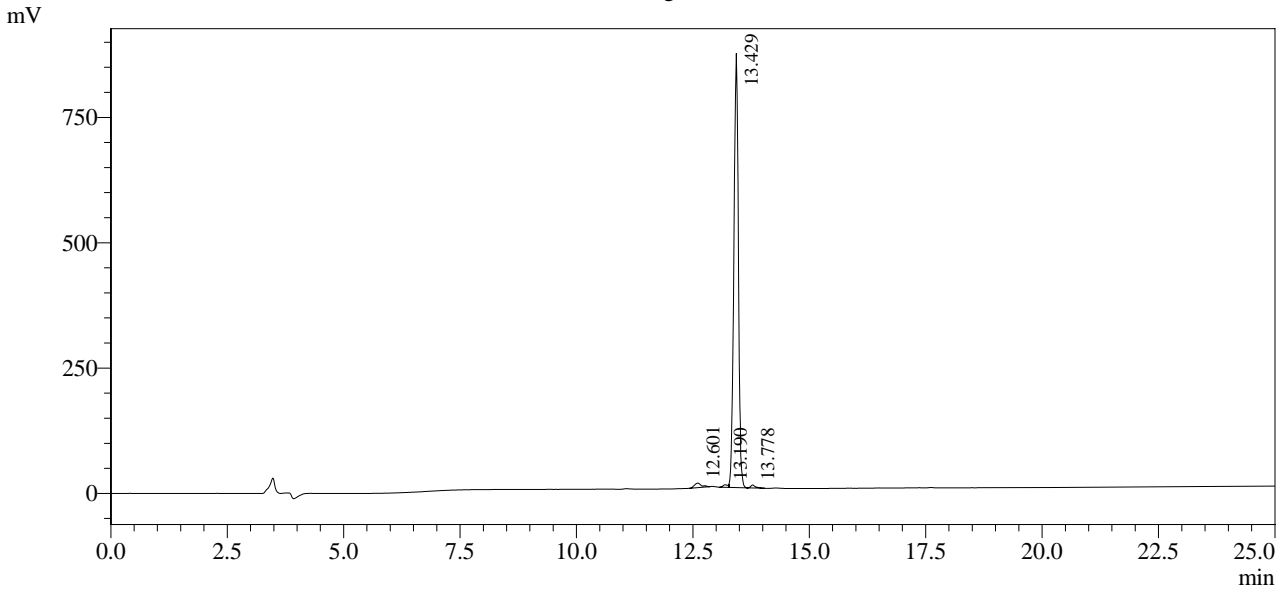
<<Column Performance>>

<Detector A>

Column : Inertsil ODS-3 4.6 x 250 mm

Equipment: GK1101009

Chromatogram



1 Det.A Ch1 / 220nm

Peak Table

Detector A Ch1 220nm

Peak#	Ret. Time	Area	Height	Area %
1	12.601	96662	9104	1.601
2	13.190	41382	5181	0.685
3	13.429	5860314	865801	97.047
4	13.778	40307	5749	0.667
Total		6038665	885834	100.000