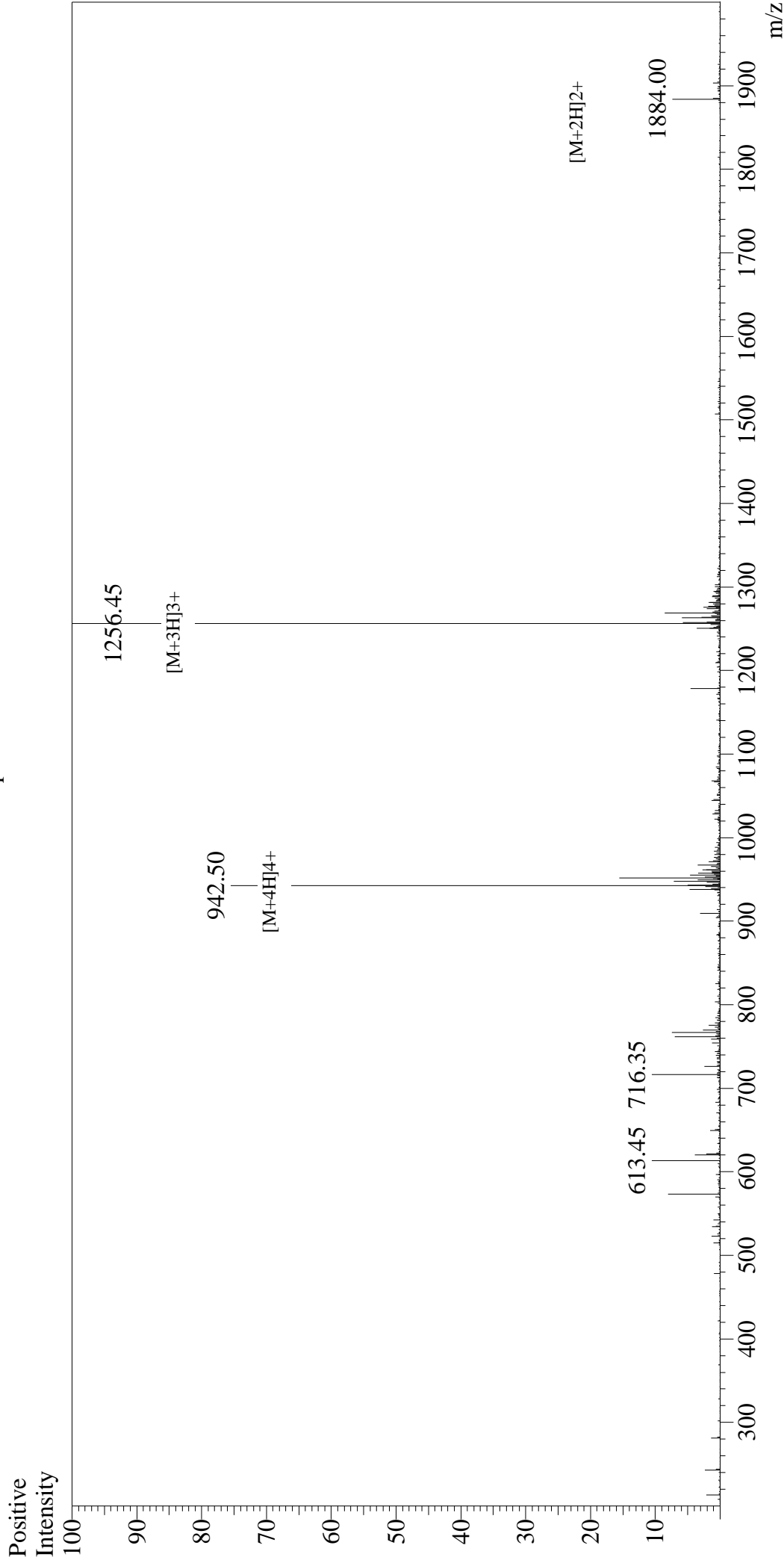


# Mass Spectrum



## Sample Information

User : Gary  
Month-Day Processed : 10/12/17  
Time Processed : 19:22:36  
Injection Volume : 0.2  
Sample Name : Glucagon-Like Peptide (GLP) II, human  
Cat No. : RPI0769-0.5  
Lot No. : PE3421710  
Theoretical MW : 3766.20  
Observed MW : 3766.35

## Interface

Interface : ESI  
Nebulizing Gas Flow : 1.5L/min  
CDL Temp : 250°C  
Block Temp : 200°C

## Interface Bias

Interface Bias : +4.5kV  
Drying Gas Flow : 5 L/min  
T.Flow : 0.2ml/min  
B.conc : 50%H2O/50%MeOH