

Sample Name : β -Amyloid (1-42), human
 Cat. No. : RP10017 Lot. No. : PE1721806

Pump A : 0.065% trifluoroacetic in 100% water (v/v)
 Pump B : 0.05% trifluoroacetic in 100% acetonitrile (v/v)
 Total Flow: 1 ml/min
 Wavelength: 220 nm

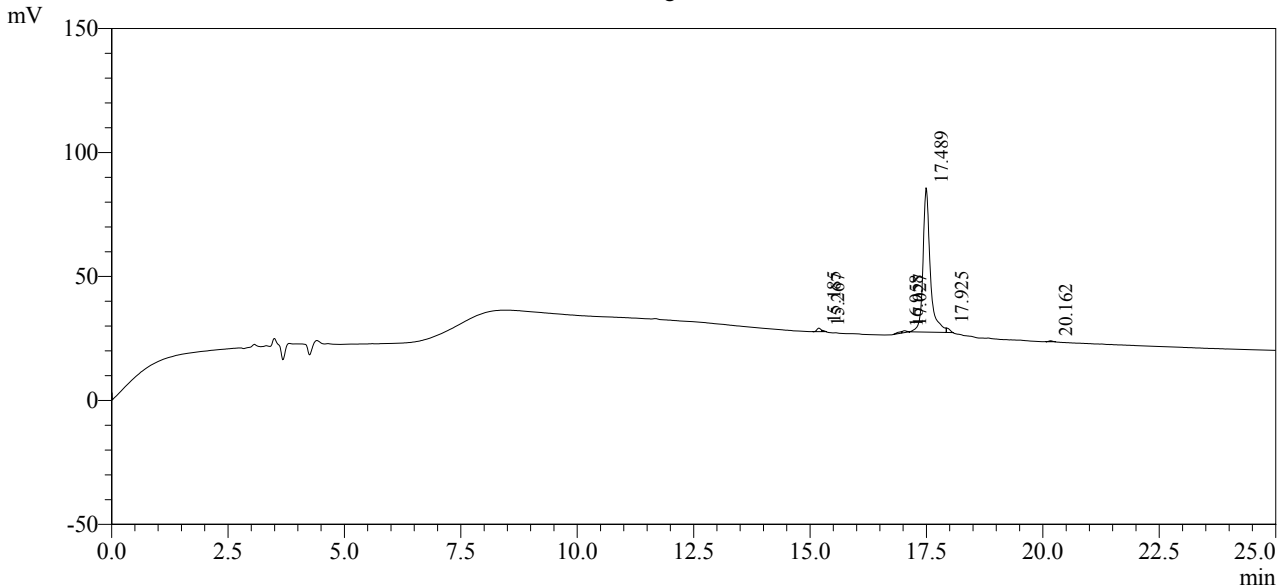
| Time | Unit | Command | Value | Comment |
|-------|------------|---------------|-------|---------|
| 0.01 | Pumps | Pump A B.Conc | 5 | |
| 25.00 | Pumps | Pump A B.Conc | 65 | |
| 25.01 | Pumps | Pump A B.Conc | 95 | |
| 27.00 | Pumps | Pump A B.Conc | 95 | |
| 27.01 | Pumps | Pump A B.Conc | 5 | |
| 35.00 | Pumps | Pump A B.Conc | 5 | |
| 35.01 | Controller | Stop | | |

<<Column Performance>>

<Detector A>

Column : Inertsil ODS-3 4.6 x 250 mm

Chromatogram



1 Det.A Ch1 / 220nm

Peak Table

Detector A Ch1 220nm

| Peak# | Ret. Time | Area | Height | Area % |
|-------|-----------|--------|--------|---------|
| 1 | 15.185 | 8429 | 1423 | 1.278 |
| 2 | 15.267 | 1485 | 521 | 0.225 |
| 3 | 16.958 | 4574 | 565 | 0.693 |
| 4 | 17.027 | 4708 | 733 | 0.714 |
| 5 | 17.489 | 629591 | 58216 | 95.439 |
| 6 | 17.925 | 8567 | 1794 | 1.299 |
| 7 | 20.162 | 2324 | 395 | 0.352 |
| Total | | 659679 | 63647 | 100.000 |