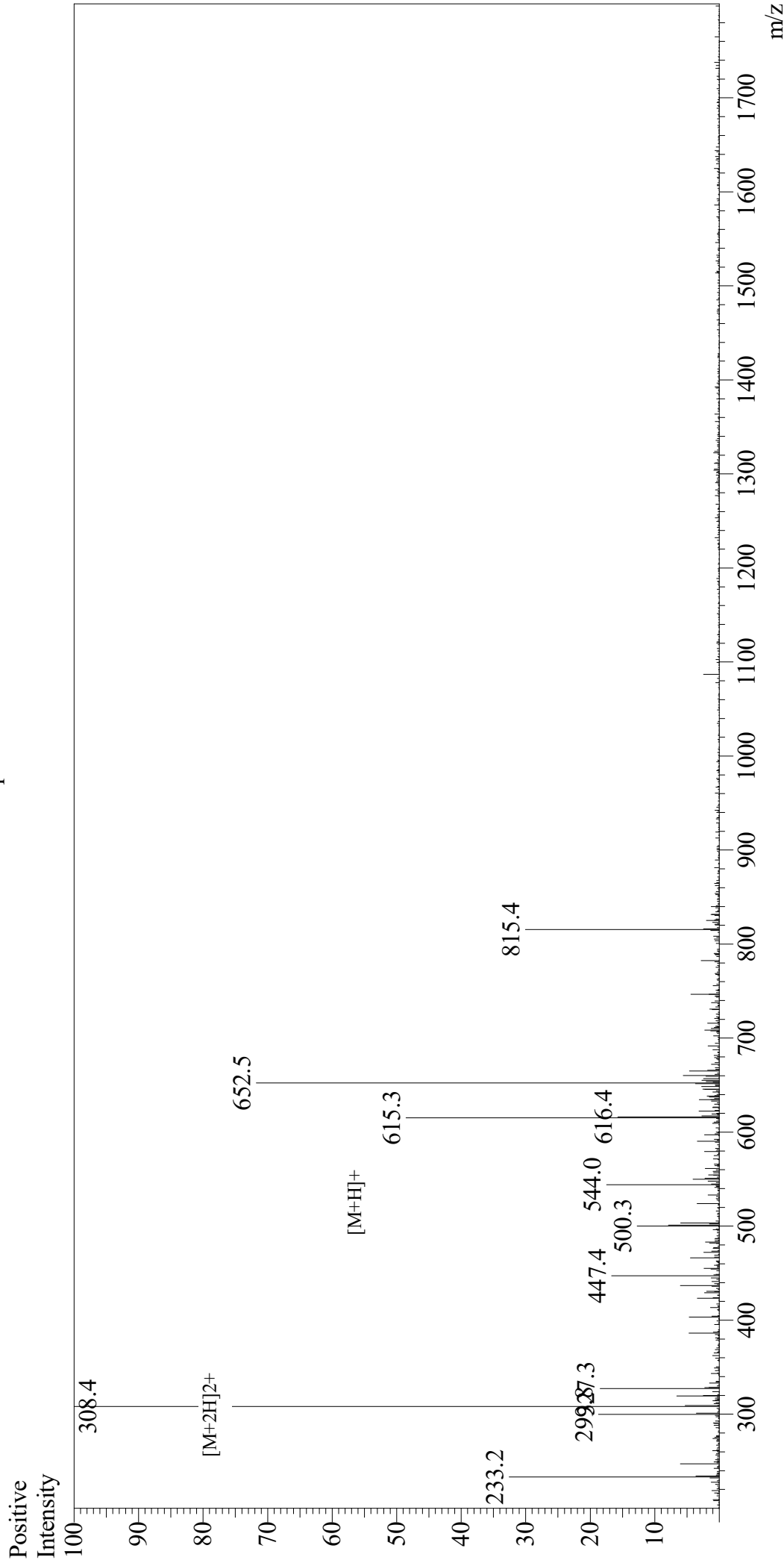


# Mass Spectrum



## Sample Information

User : Gary  
 Month-Day Processed : 05/04/19  
 Time Processed : 02:44:34 PM  
 Injection Volume : 0.3  
 Sample Name : Gly-Arg-Gly-Asp-Asn-Pro  
 Cat No. : RP10847  
 Lot No. : PE2101904  
 Theoretical MW : 614.60  
 Observed MW : 614.8

Interface : ESI  
 Nebulizing Gas Flow : 1.5L/min  
 CDL Temp : 250  
 Block Temp : 200

Equipment : GK11010007  
 Interface Bias : +4.5kV  
 Drying Gas Flow : 5 L/min  
 T.Flow : 0.2ml/min  
 B.conc : 50%H2O/50%MeOH