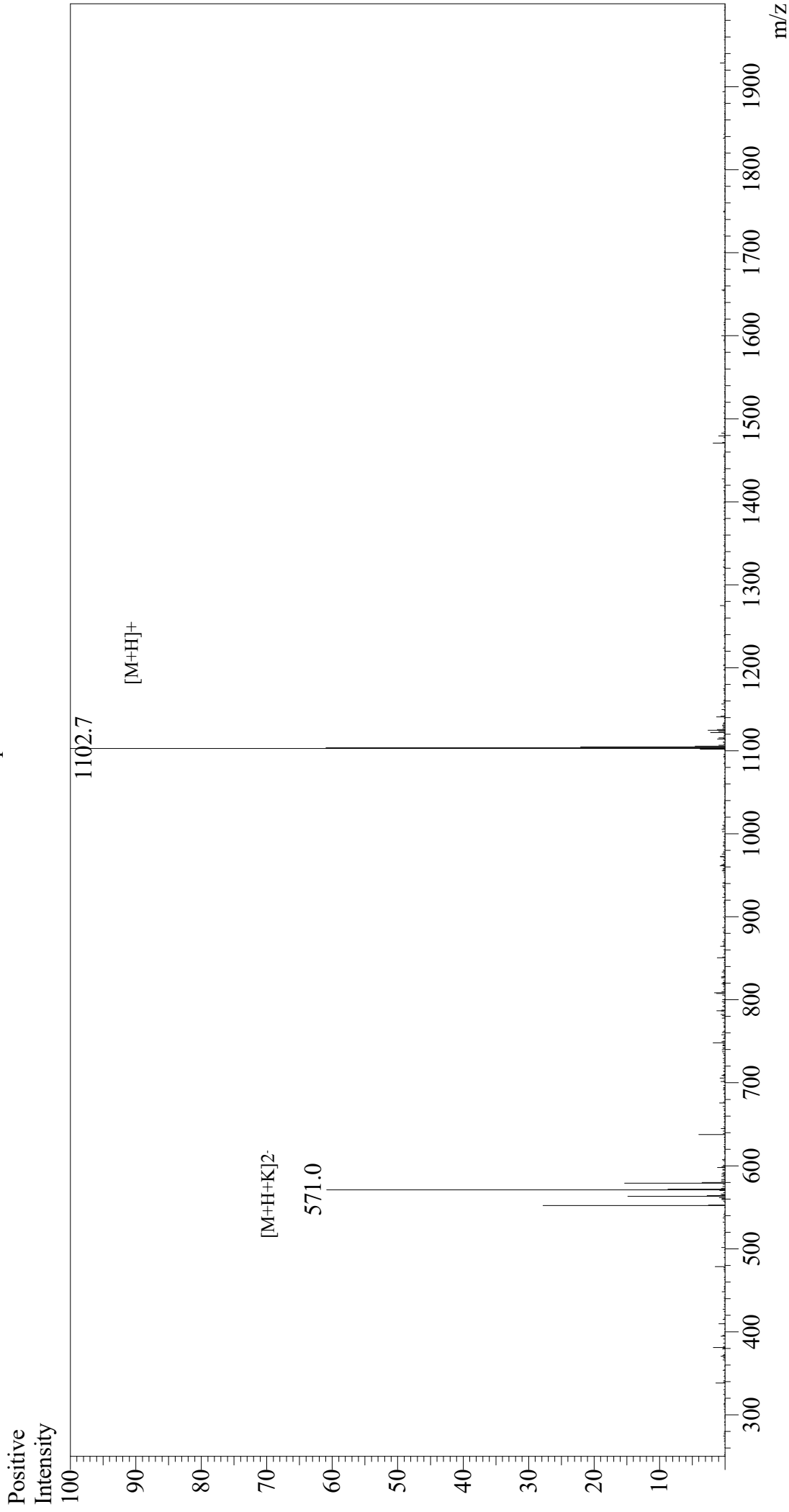


Mass Spectrum



Sample Information

Month-Day Processed : 06/19/21

Time Processed : 15:07:19

Injection Volume : 0.2

Sample Name : HA Peptide

Cat No. : RP11735

Lot No. : E8888321F

Theoretical MW : 1102.15

Observed MW : 1101.7

Interface : ESI

Nebulizing Gas Flow : 1.5L/min

CDL Temp : 250

Block Temp : 200

Equipment : GK11010007

Interface Bias : +3.5 kV

Drying Gas Flow : 5 L/min

T.Flow : 0.2 ml/min

B.conc : 50%H₂O/50%MeOH