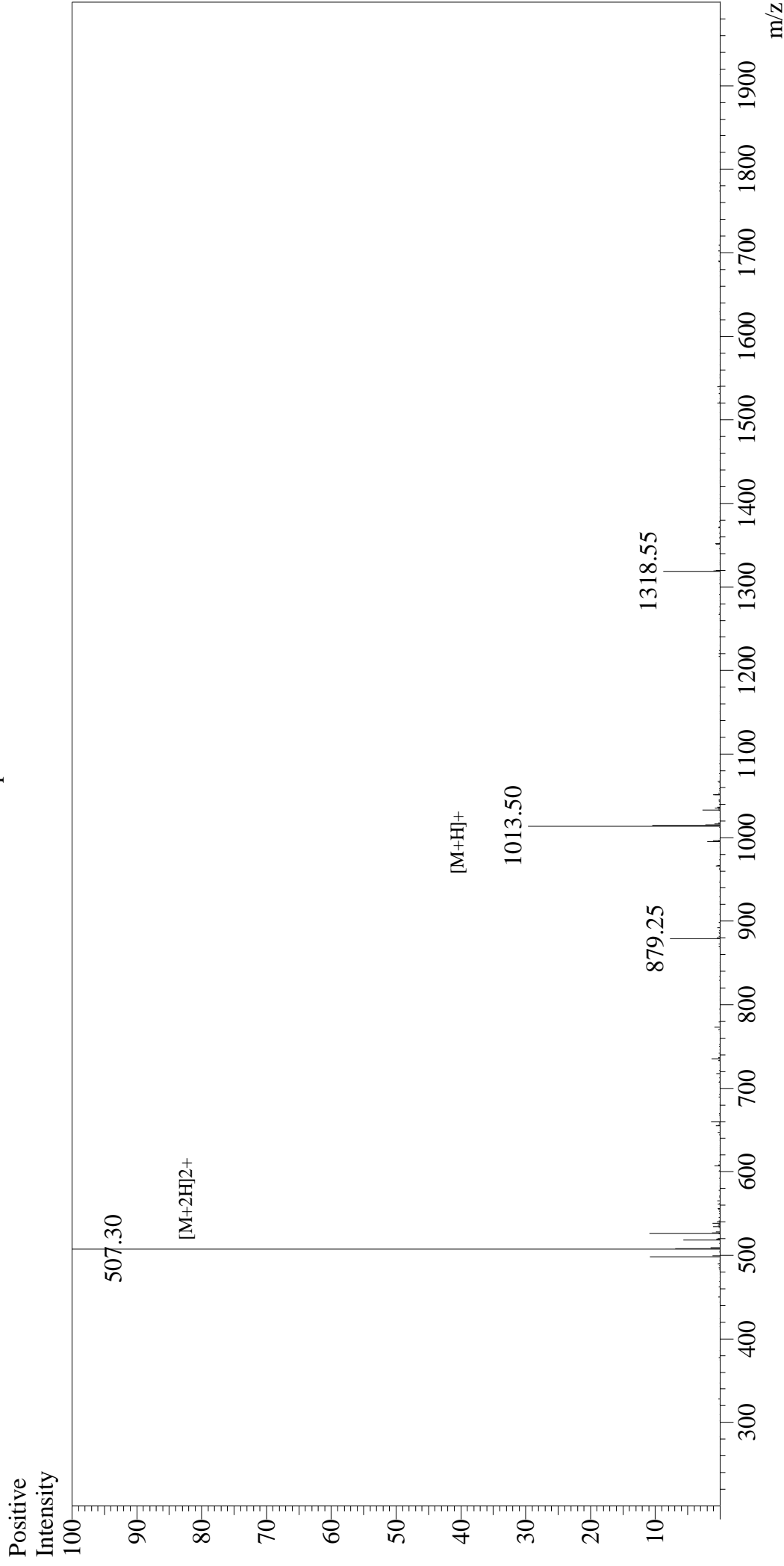


Mass Spectrum



Sample Information

User : Gary
Month-Day Processed : 12/07/16
Time Processed : 10:29:20
Injection Volume : 0.2
Sample Name : DYKDDDDK Peptide
Cat No. : RPI0586
Lot No. : PE3521612
Theoretical MW : 1012.97
Observed MW : 1012.60

Interface : ESI
Nebulizing Gas Flow : 1.5L/min
CDL Temp : 250°C
Block Temp : 200°C

Interface Bias : +4.5kV
Drying Gas Flow : 5 L/min
T.Flow : 0.2ml/min
B.conc : 50%H2O/50%MeOH