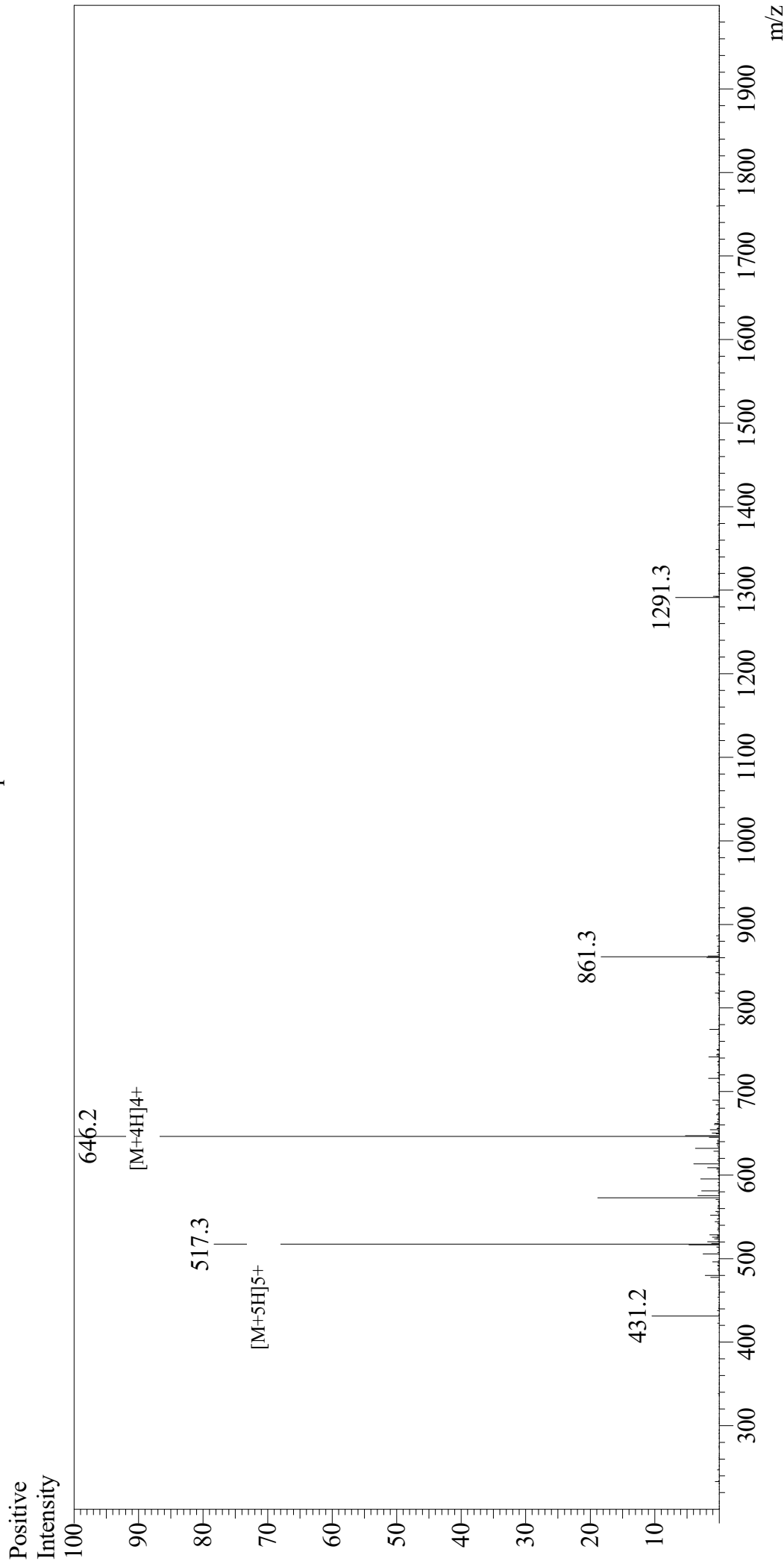


Mass Spectrum



Sample Information

User : Gary
Month-Day Processed : 07/11/19
Time Processed : 07:38:40 PM
Injection Volume : 0.3
Sample Name : MOG(35-55)
Cat No. : RP10245
Lot No. : E0789719G
Theoretical MW : 2581.98
Observed MW : 2580.8

Interface : ESI
Nebulizing Gas Flow : 1.5L/min
CDL Temp : 250
Block Temp : 200

Equipment : GK11010007
Interface Bias : +4.5kV
Drying Gas Flow : 5 L/min
T.Flow : 0.2ml/min
B.conc : 50%H2O/50%MeOH