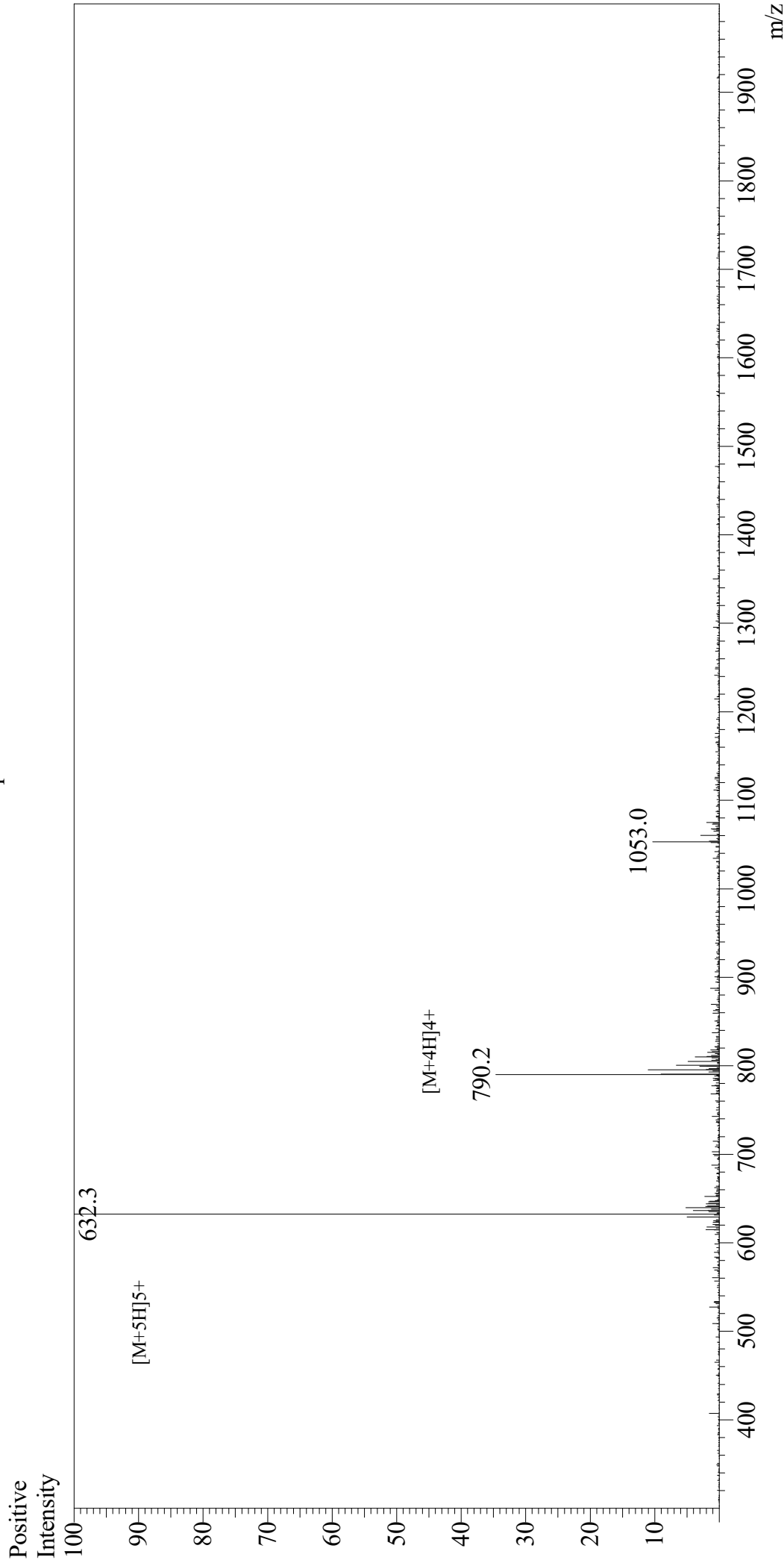


Mass Spectrum



Sample Information

User : Gary
Month-Day Processed : 12/01/19
Time Processed : 12:43:07 PM
Injection Volume : 0.4
Sample Name : Galanin, human
Cat No. : RP10801
Lot No. : E7076319K
Theoretical MW : 3157.41
Observed MW : 3156.5

Interface

Interface : ESI
Nebulizing Gas Flow : 1.5L/min
CDL Temp : 250
Block Temp : 200

Equipment

Equipment : GK11010007
Interface Bias : +4.5kV
Drying Gas Flow : 5 L/min
T.Flow : 0.2ml/min
B.conc : 50%H2O/50%MeOH