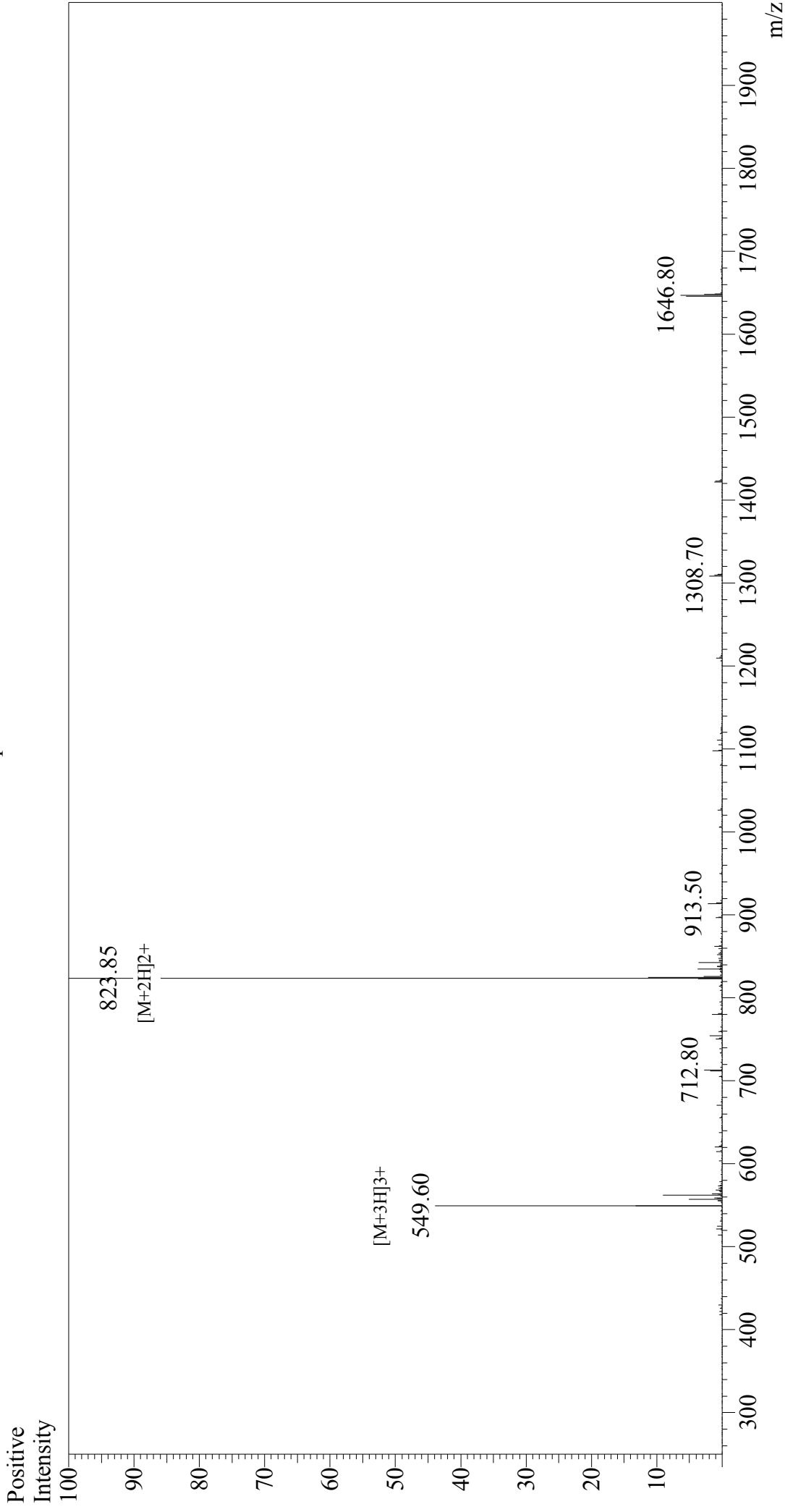


Mass Spectrum



Sample Information

Acquired by : Gary
Month-Day Processed : 10/20/17
Time Processed : 11:54:11
Injection Volume : 0.2
Sample Name : InsB 9-23
Cat. No. : RP20391
Lot. No. : PE7201710
Theoretical MW : 1645.90
Observed MW : 1645.70

Interface : ESI
Nebulizing Gas Flow : 1.5L/min
CDL Temp : 250°C
Block Temp : 200°C

Interface Bias : +4.5 kV
Drying Gas Flow : 5 L/min
T.Flow : 0.2 ml/min
B.conc : 50% H_2O /50% $MeOH$