

Sample Name : Myelin Basic Protein (MBP) (68-82), guinea pig  
 Cat. No. : RP10605  
 Lot. No. : E3871820G  
 Time Processed : 7:43:52  
 Month-Day-Year Processed : 07/17/2020

Pump A : 0.065% trifluoroacetic in 100% water (v/v)  
 Pump B : 0.05% trifluoroacetic in 100% acetonitrile (v/v)  
 Total Flow: 1 ml/min  
 Wavelength: 220 nm

Time	Unit	Command	Value	Comment
0.01	Pumps	Pump A B.Conc	5	
25.00	Pumps	Pump A B.Conc	65	
25.01	Pumps	Pump A B.Conc	95	
27.00	Pumps	Pump A B.Conc	95	
27.01	Pumps	Pump A B.Conc	5	
35.00	Pumps	Pump A B.Conc	5	
35.01	Controller	Stop		

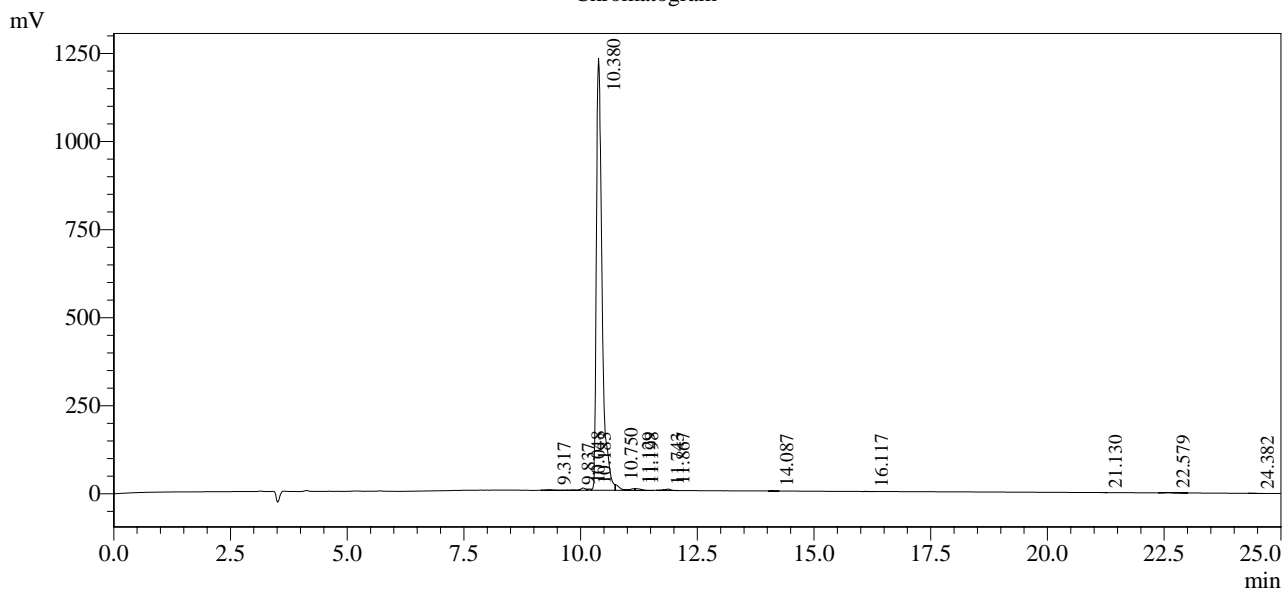
<<Column Performance>>

<Detector A>

Column : Inertsil ODS-3 4.6 x 250 mm

Equipment: GK11010011

Chromatogram



1 Det.A Ch1 / 220nm

Peak Table

Detector A Ch1 220nm

Peak#	Ret. Time	Area	Height	Area %
1	9.317	10425	1168	0.097
2	9.837	4745	717	0.044
3	10.048	47358	6419	0.442
4	10.183	18957	3559	0.177
5	10.380	10400862	1226460	97.109
6	10.750	99838	15684	0.932
7	11.129	31312	4401	0.292
8	11.198	38752	4405	0.362
9	11.743	9825	1740	0.092
10	11.867	28820	3810	0.269
11	14.087	1052	221	0.010
12	16.117	1125	186	0.011
13	21.130	1601	243	0.015
14	22.579	14780	1277	0.138
15	24.382	1083	132	0.010
Total		10710536	1270423	100.000