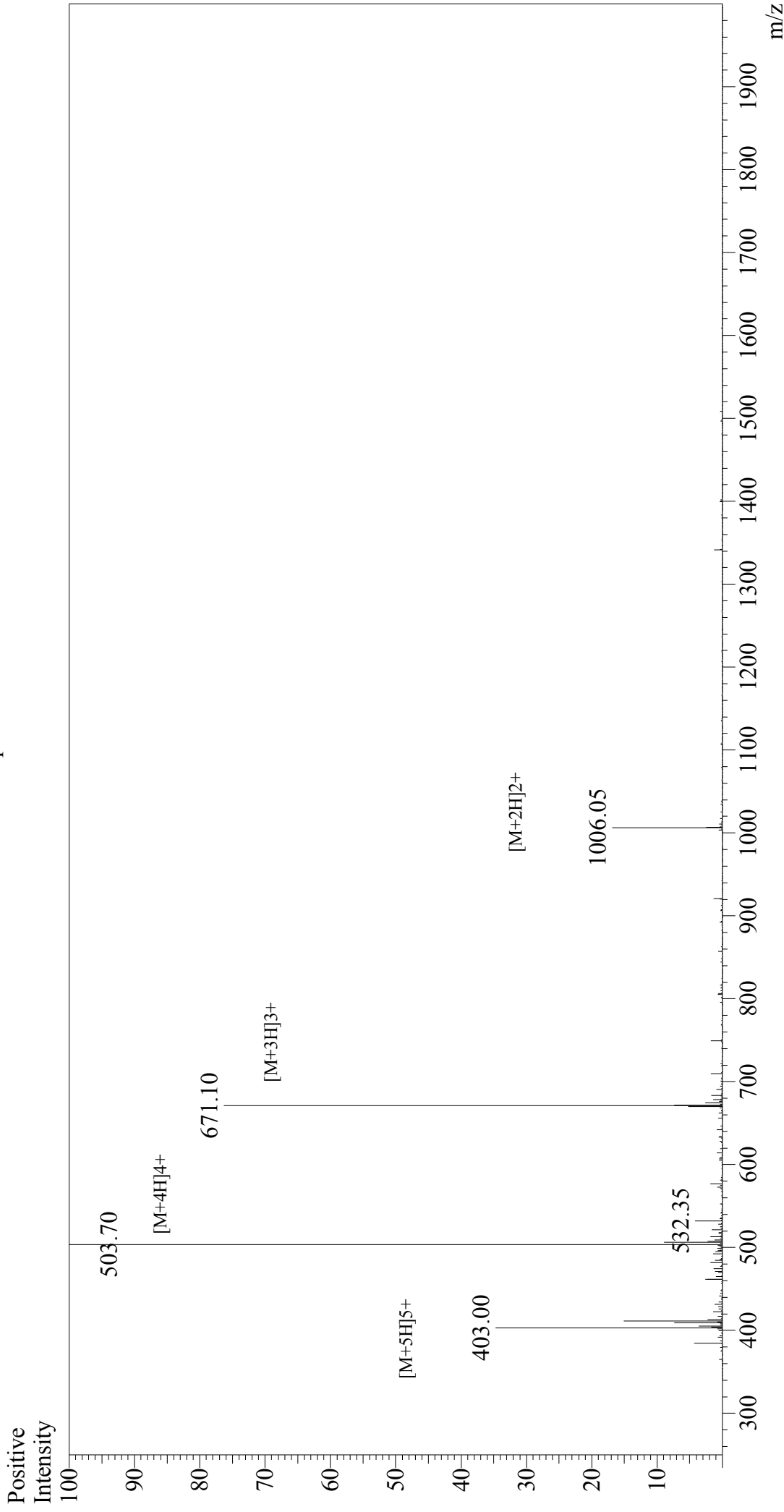


Mass Spectrum



Sample Information

Acquired by : Gary
Month-Day Processed : 05/31/18
Time Processed : 12:29:13
Injection Volume : 0.2
Sample Name : Systemin
Sample ID : U7925DE290-1
Theoretical MW : 2010.30
Observed MW : 2010.80

Interface : ESI
Nebulizing Gas Flow : 1.5L/min
CDL Temp : 250°C
Block Temp : 200°C

Interface Bias : +4.5 kV
Drying Gas Flow : 5 L/min
T.Flow : 0.2 ml/min
B.conc : 50% H₂O/50% MeOH