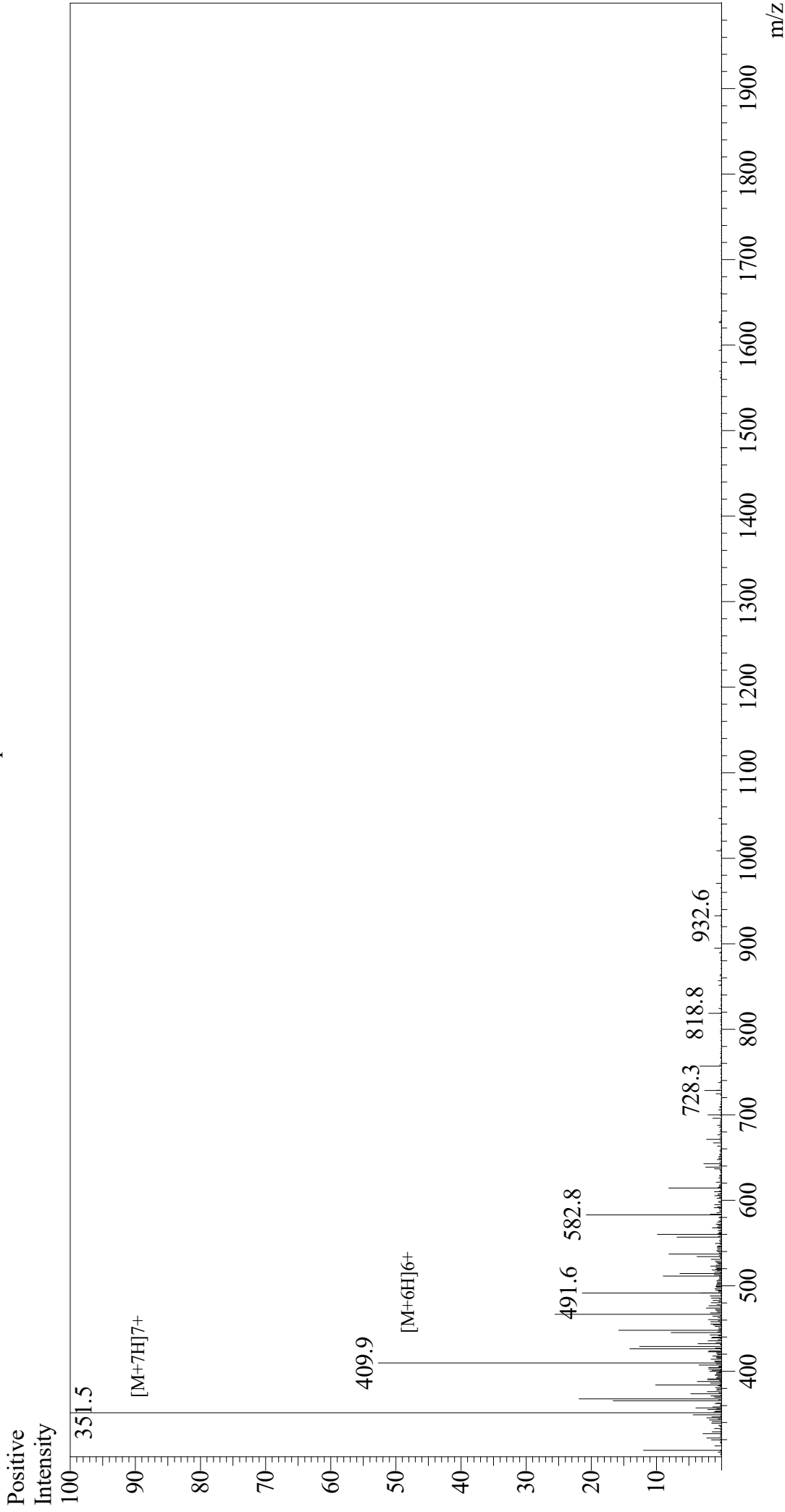


Mass Spectrum



Sample Information

Acquired by : Gary
 Month-Day Processed : 06/14/19
 Time Processed : 07:46:19 AM
 Injection Volume : 0.3
 Sample Name : sgp91 ds-tat Peptide 2, scrambled
 Cat. No. : RP20436
 Lot. No. : E0334719F
 Theoretical MW : 2453.00
 Observed MW : 2453.5

Interface : ESI
 Nebulizing Gas Flow : 1.5L/min
 CDL Temp : 250
 Block Temp : 200

Equipment : GK11010007
 Interface Bias : +4.5 kV
 Drying Gas Flow : 5 L/min
 T.Flow : 0.2 ml/min
 B.conc : 50%H2O/50%MeOH