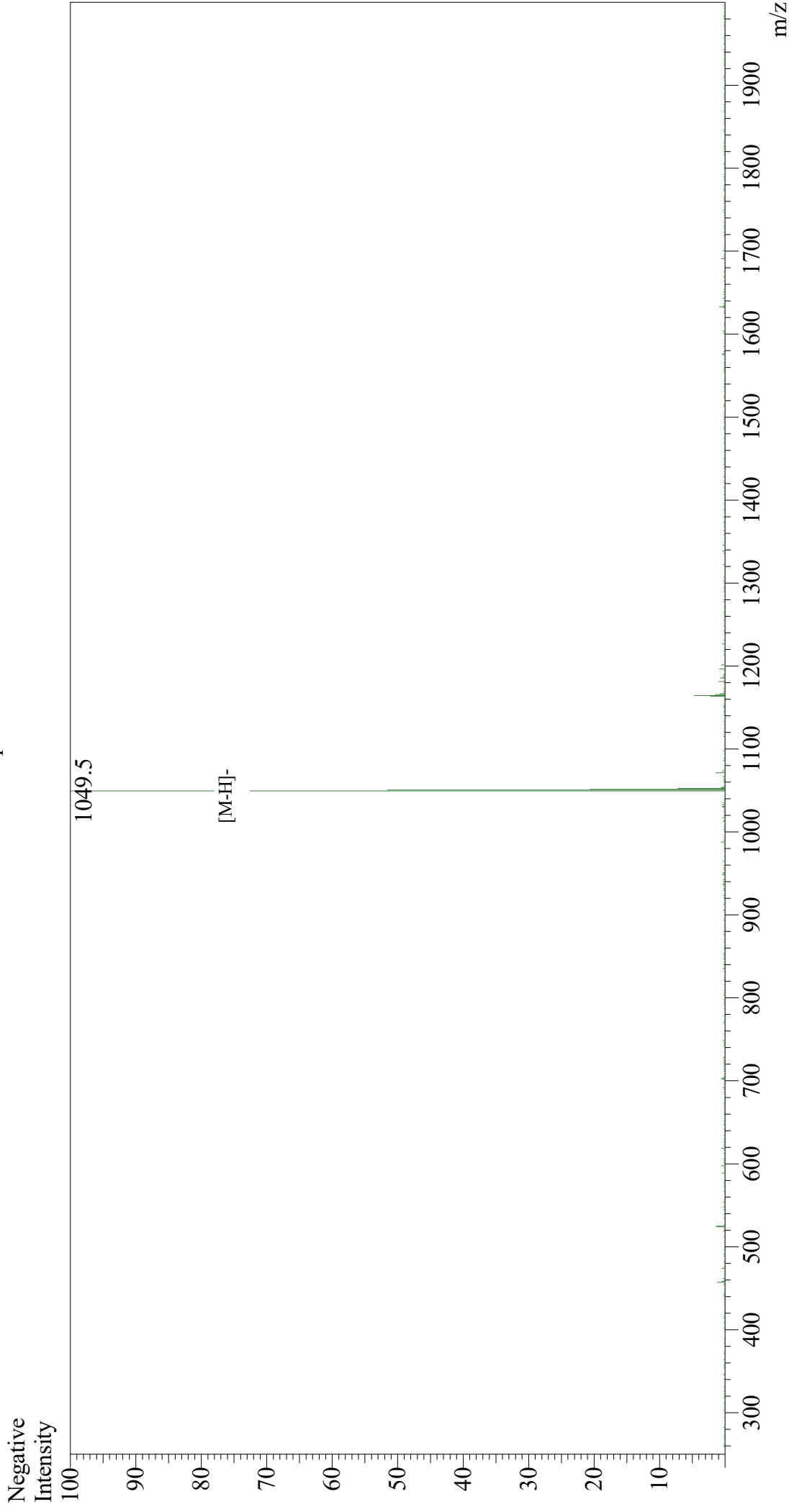


Mass Spectrum



Sample Information

User : Gary
Month-Day Processed : 05/24/19
Time Processed : 08:30:55 AM
Injection Volume : 0.3
Sample Name : CEF6
Cat No. : RP11768
Lot No. : PE1301905
Theoretical MW : 1051.26
Observed MW : 1050.5

Interface : ESI
Nebulizing Gas Flow : 1.5L/min
CDL Temp : 250
Block Temp : 200

Equipment : GK11010007
Interface Bias : -3.5 kV
Drying Gas Flow : 5 L/min
T.Flow : 0.2 ml/min
B.conc : 50%H2O/50%MeOH