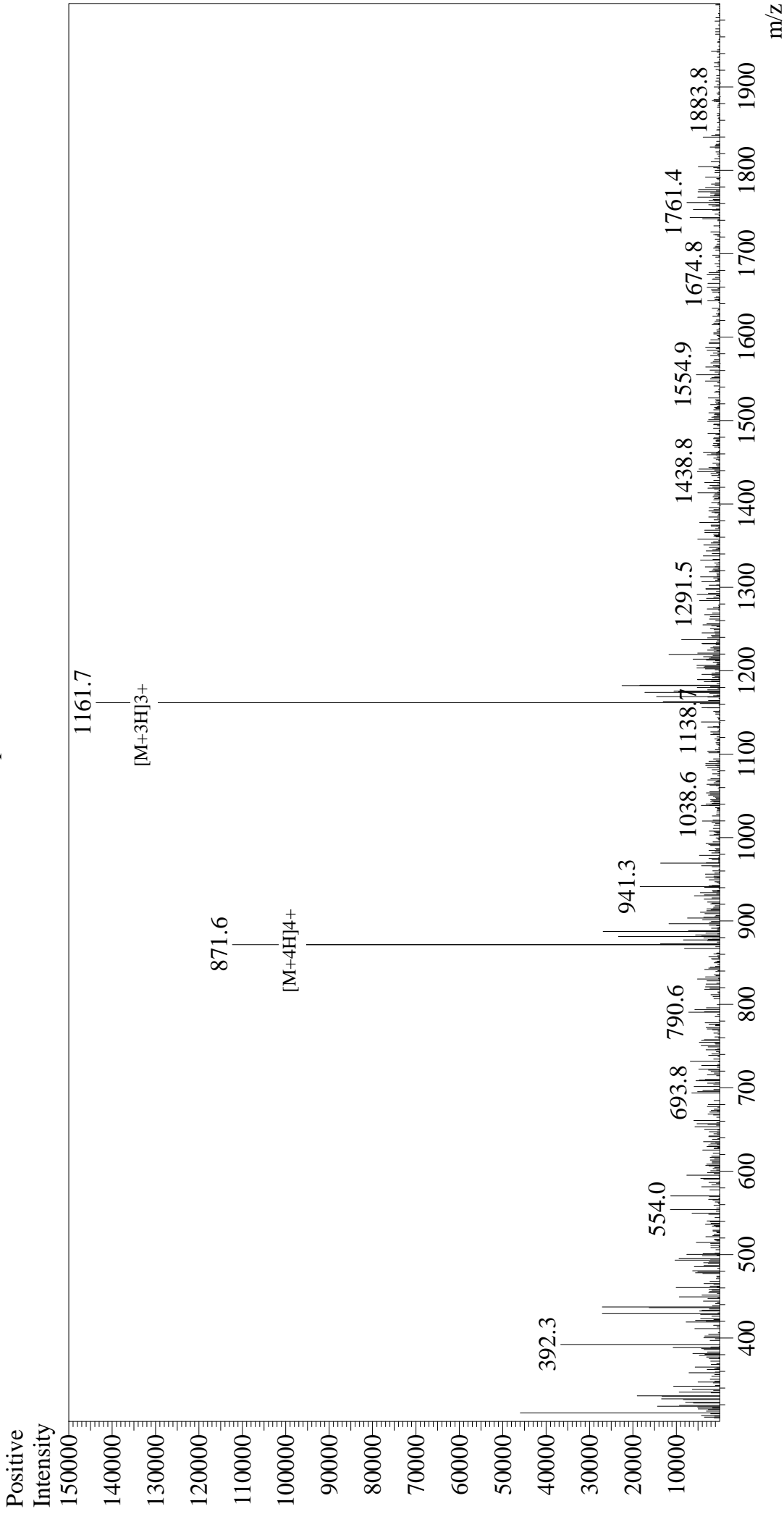


Mass Spectrum



Sample Information

Acquired by : Gary
 Month-Day Processed : 08/17/19
 Time Processed : 21:04:24
 Injection Volume : Sample 0.4
 Name : Glucagon (1-29), Human
 Cat. No. : RP10772
 Lot. No. : E1461519H
 Theoretical MW : 3482.80
 Observed MW : 3482.1

Interface : ESI
 Nebulizing Gas Flow : 1.5L/min
 CDL Temp : 250
 Block Temp : 200

Equipment : GK11010007
 Interface Bias : +4.5 kV
 Drying Gas Flow : 5 L/min
 T.Flow : 0.2 ml/min
 B.conc : 50% H₂O/50% MeOH