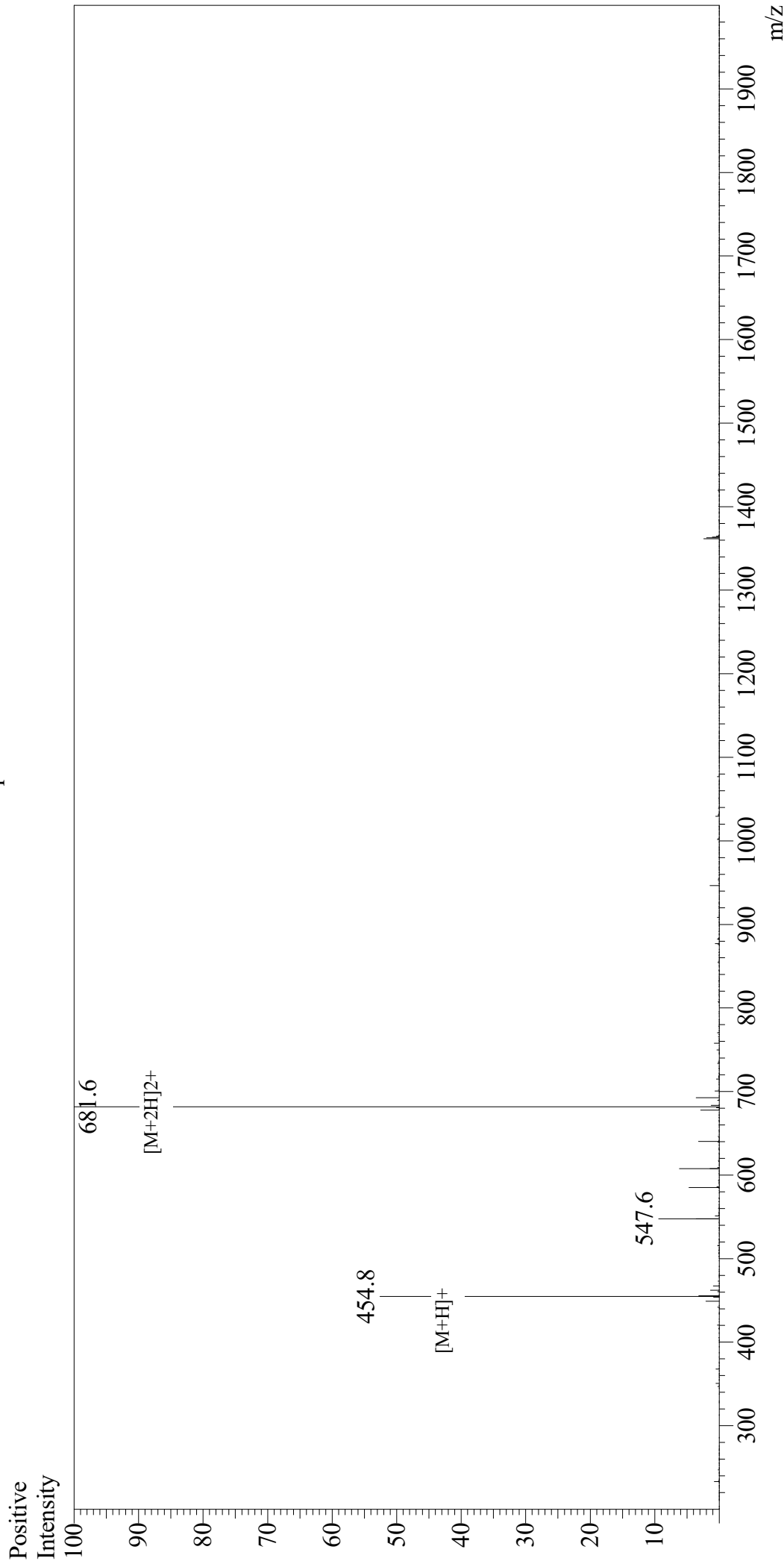


Mass Spectrum



Sample Information

User : Gary
Month-Day Processed : 09/23/19
Time Processed : 07:48:26 PM
Injection Volume : 0.3
Sample Name : [Sar9]-Substance P
Cat No. : RP10210
Lot No. : E47099191
Theoretical MW : 1361.66
Observed MW : 1361.2

Interface : ESI
Nebulizing Gas Flow : 1.5L/min
CDL Temp : 250
Block Temp : 200

Equipment : GK11010007
Interface Bias : +4.5kV
Drying Gas Flow : 5 L/min
T.Flow : 0.2ml/min
B.conc : 50%H2O/50%MeOH