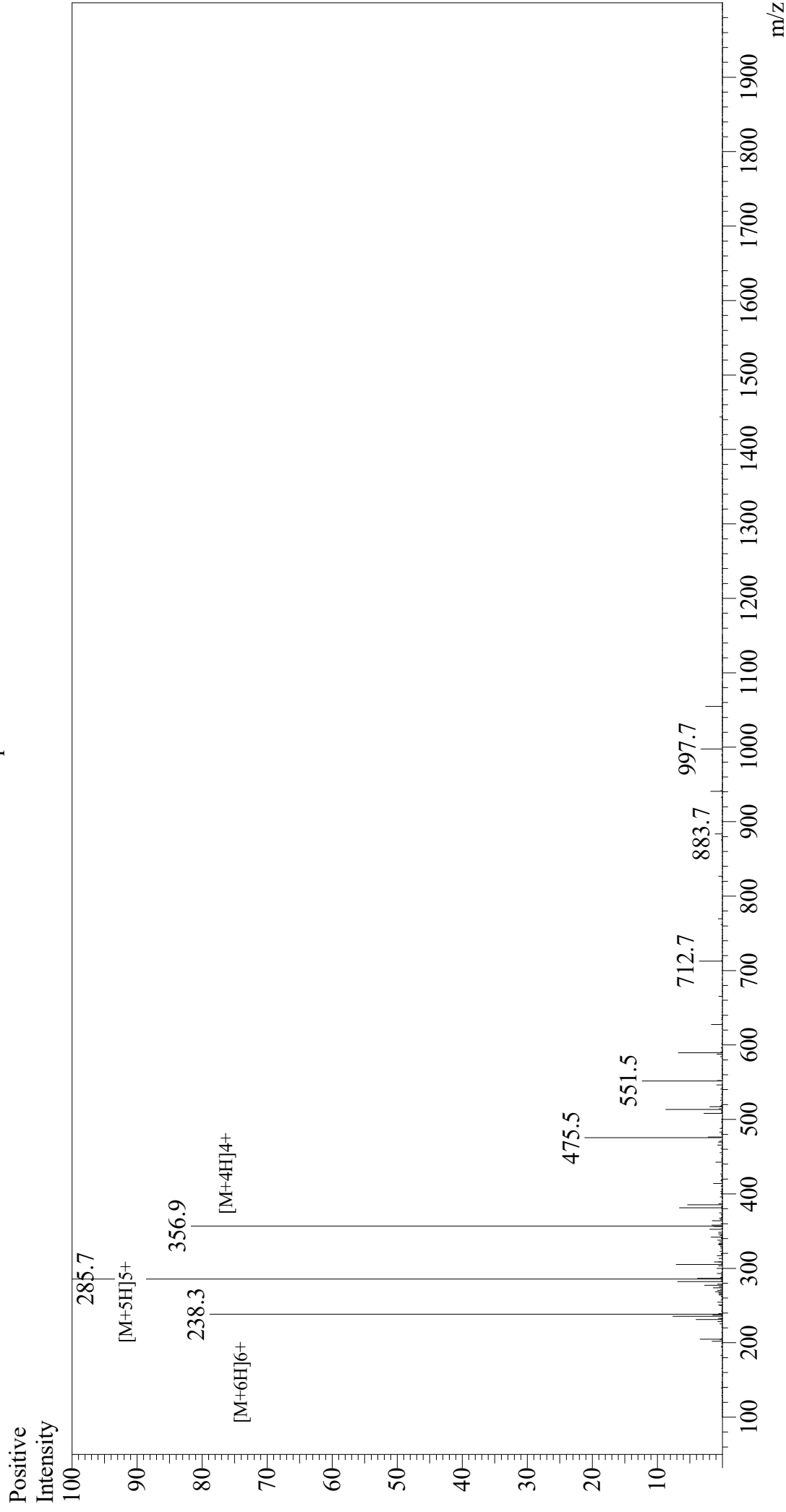


Mass Spectrum



Sample Information
Month-Day Processed : 10/13/20
Time Processed : 03:15:45 PM
Injection Volume : 0.8
Sample Name : (Arg)9
Cat No. : RP20403
Lot No. : E5087620J
Theoretical MW : 1423.70
Observed MW : 1423.5

Interface : ESI
Nebulizing Gas Flow : 1.5L/min
CDL Temp : 250
Block Temp : 200
Equipment : GK11010007
Interface Bias : +4.5 kV
Drying Gas Flow : 5 L/min
T.Flow : 0.2 ml/min
B.conc : 50% H₂O/50% MeOH