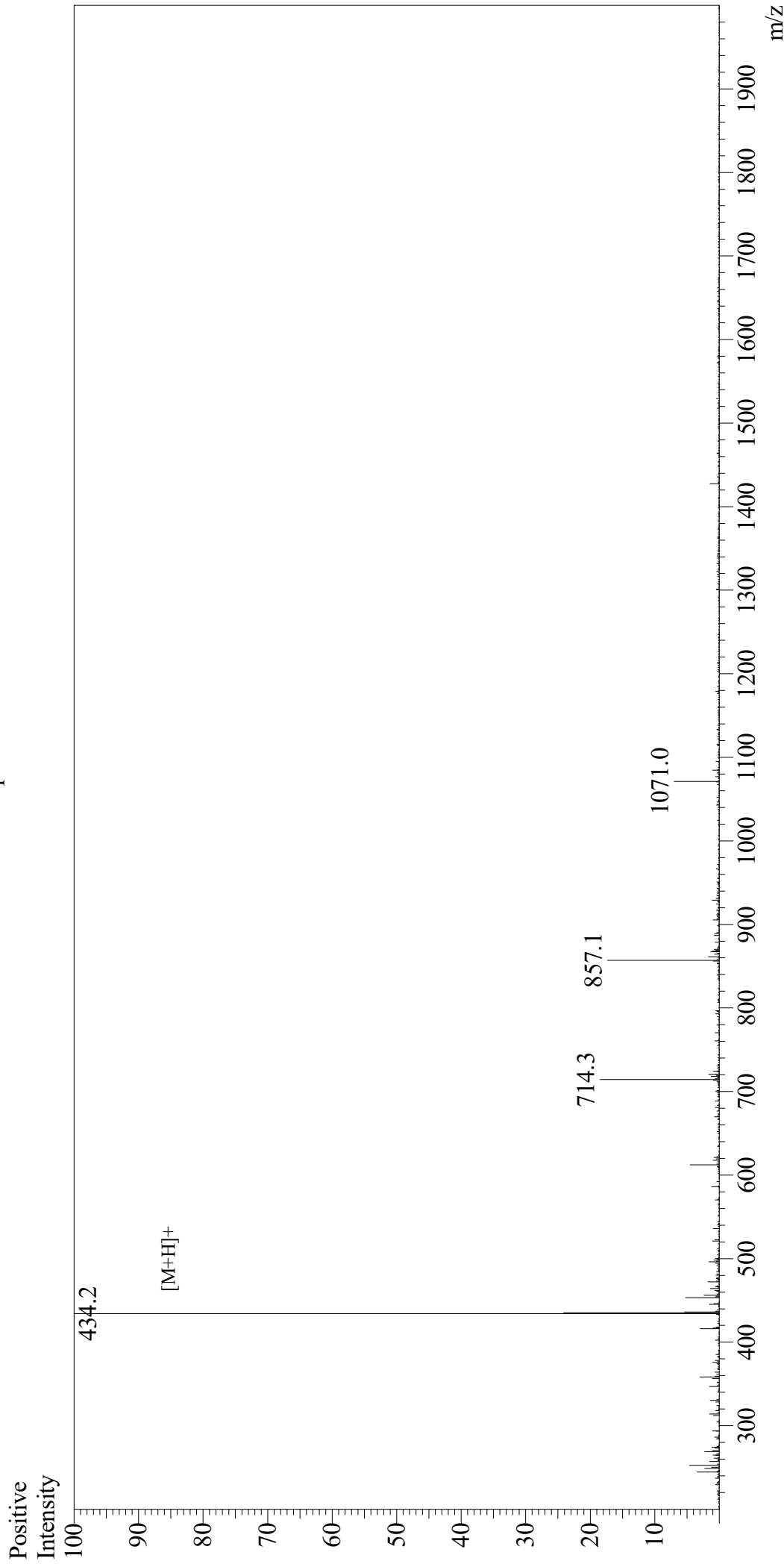


Mass Spectrum



Sample Information
Month-Day Processed : 09/29/20
Time Processed : 10:45:57 PM
Injection Volume : 0.3
Sample Name : Arg-Gly-Asp-Ser
Cat No. : RP10861
Lot No. : E8926020I
Theoretical MW : 433.42
Observed MW : 433.2

Interface : ESI
Nebulizing Gas Flow : 1.5L/min
CDL Temp : 250
Block Temp : 200

Equipment : GK11010007
Interface Bias : +4.5kV
Drying Gas Flow : 5 L/min
T.Flow : 0.2ml/min
B.conc : 50%H2O/50%MeOH