

Sample Name : Myelin Basic Protein (MBP) (68-82), guinea pig  
 Cat. No. : RP10605  
 Lot. No. : E6810819J  
 Time Processed : 8:31:16  
 Month-Day-Year Processed : 10/16/2019

Pump A : 0.065% trifluoroacetic in 100% water (v/v)  
 Pump B : 0.05% trifluoroacetic in 100% acetonitrile (v/v)  
 Total Flow: 1 ml/min  
 Wavelength: 220 nm

Time	Unit	Command	Value	Comment
0.01	Pumps	Pump A B.Conc	5	
25.00	Pumps	Pump A B.Conc	65	
25.01	Pumps	Pump A B.Conc	95	
27.00	Pumps	Pump A B.Conc	95	
27.01	Pumps	Pump A B.Conc	5	
35.00	Pumps	Pump A B.Conc	5	
35.00	Controller	Stop		

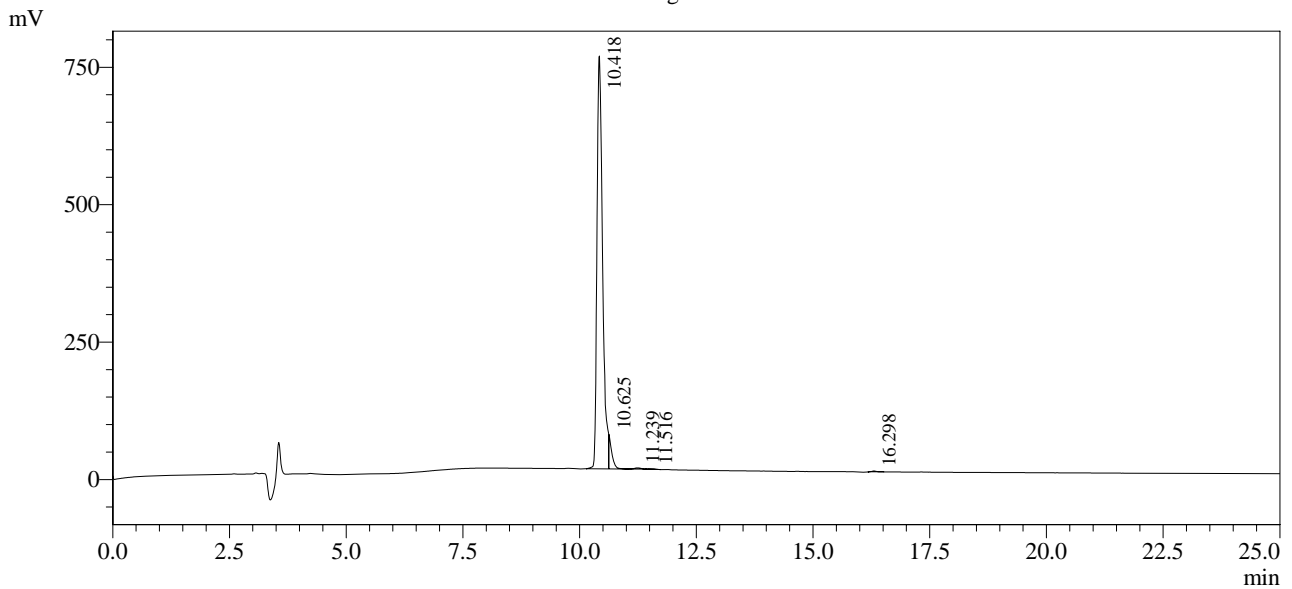
<<Column Performance>>

<Detector A>

Column : Inertsil ODS-3 4.6 x 250 mm

Equipment: SS-CM-0286

Chromatogram



1 Det. A Ch1 / 220nm  
 Detector A Ch1 220nm

Peak#	Ret. Time	Area	Height	Area %
1	10.418	6285287	751061	95.535
2	10.625	256417	63123	3.897
3	11.239	20589	2134	0.313
4	11.516	7711	684	0.117
5	16.298	9059	1443	0.138
Total		6579063	818445	100.000