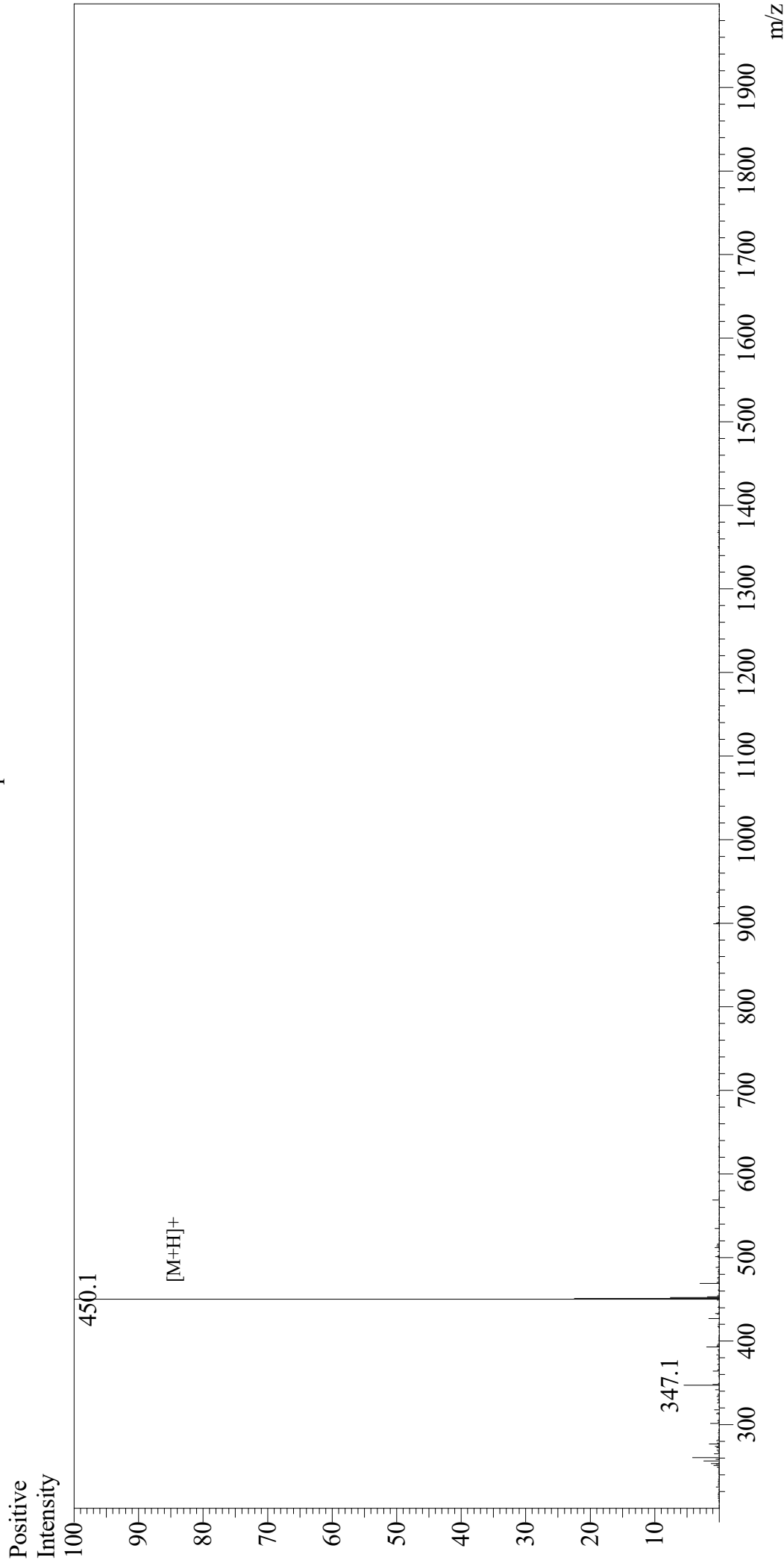


# Mass Spectrum



Sample Information  
Month-Day Processed : 09/16/20  
Time Processed : 11:18:50 PM  
Injection Volume : 0.3  
Sample Name : Arg-Gly-Asp-Cys  
Cat No. : RP10860  
Lot No. : E22371201  
Theoretical MW : 449.48  
Observed MW : 449.1

Interface : ESI  
Nebulizing Gas Flow : 1.5L/min  
CDL Temp : 250  
Block Temp : 200

Equipment : GK11010007  
Interface Bias : +4.5kV  
Drying Gas Flow : 5 L/min  
T.Flow : 0.2ml/min  
B.conc : 50%H2O/50%MeOH